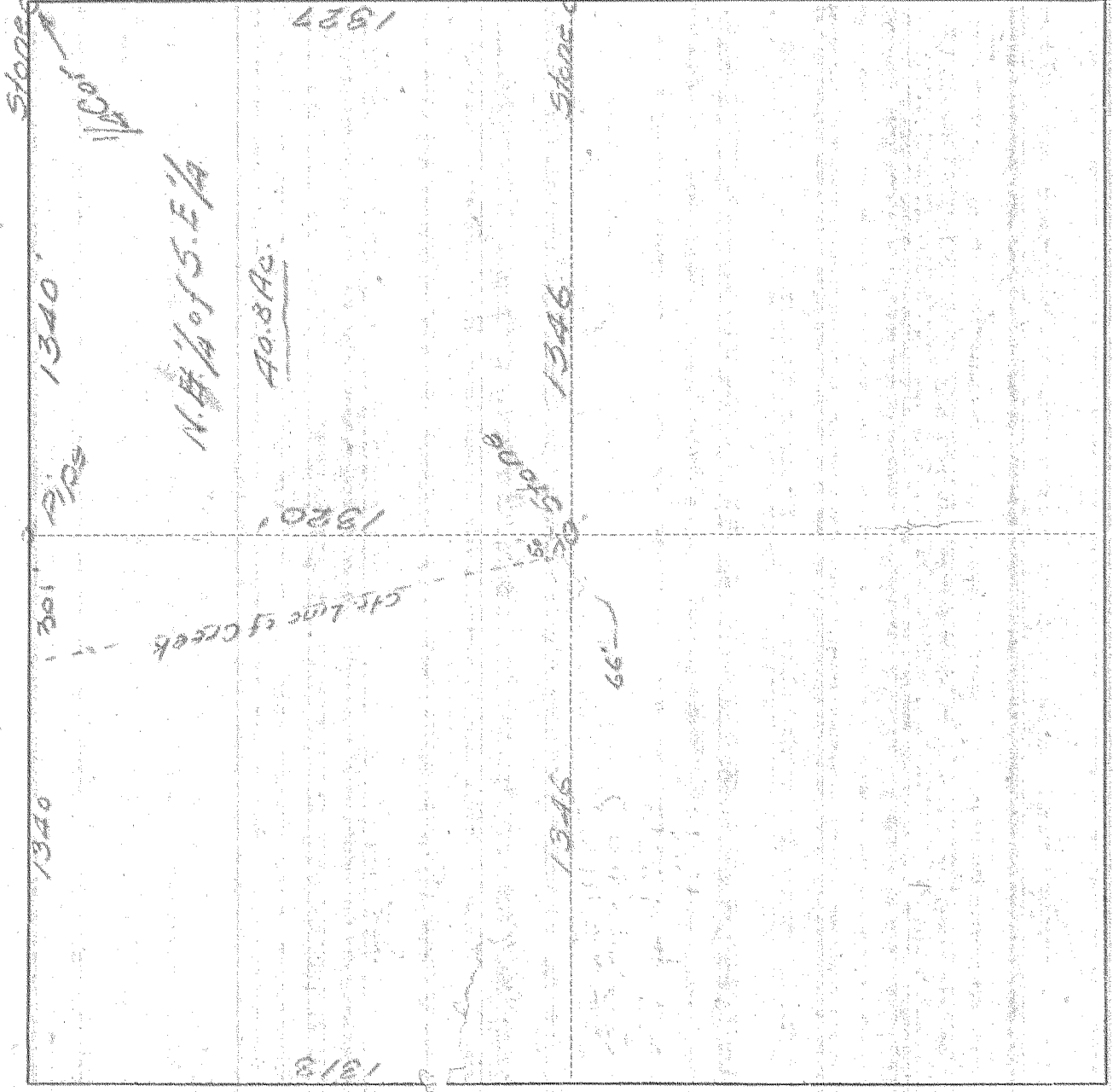


SURVEY IN N. 1/4 of S. E. 1/4 SECT. 14 TWP. 2 N. RANGE 10, EAST W. M.

FOR Butler & Colby

DATE Feb. 5 31



I do hereby certify that this sketch was made from notes taken during an actual survey made by me on Feb 5 1931, and that it correctly represents field work of said survey.

C. M. Hulbert
County Surveyor
Hood River County, Oregon

Helpers Ed Hobson 0406 (16)

14-142