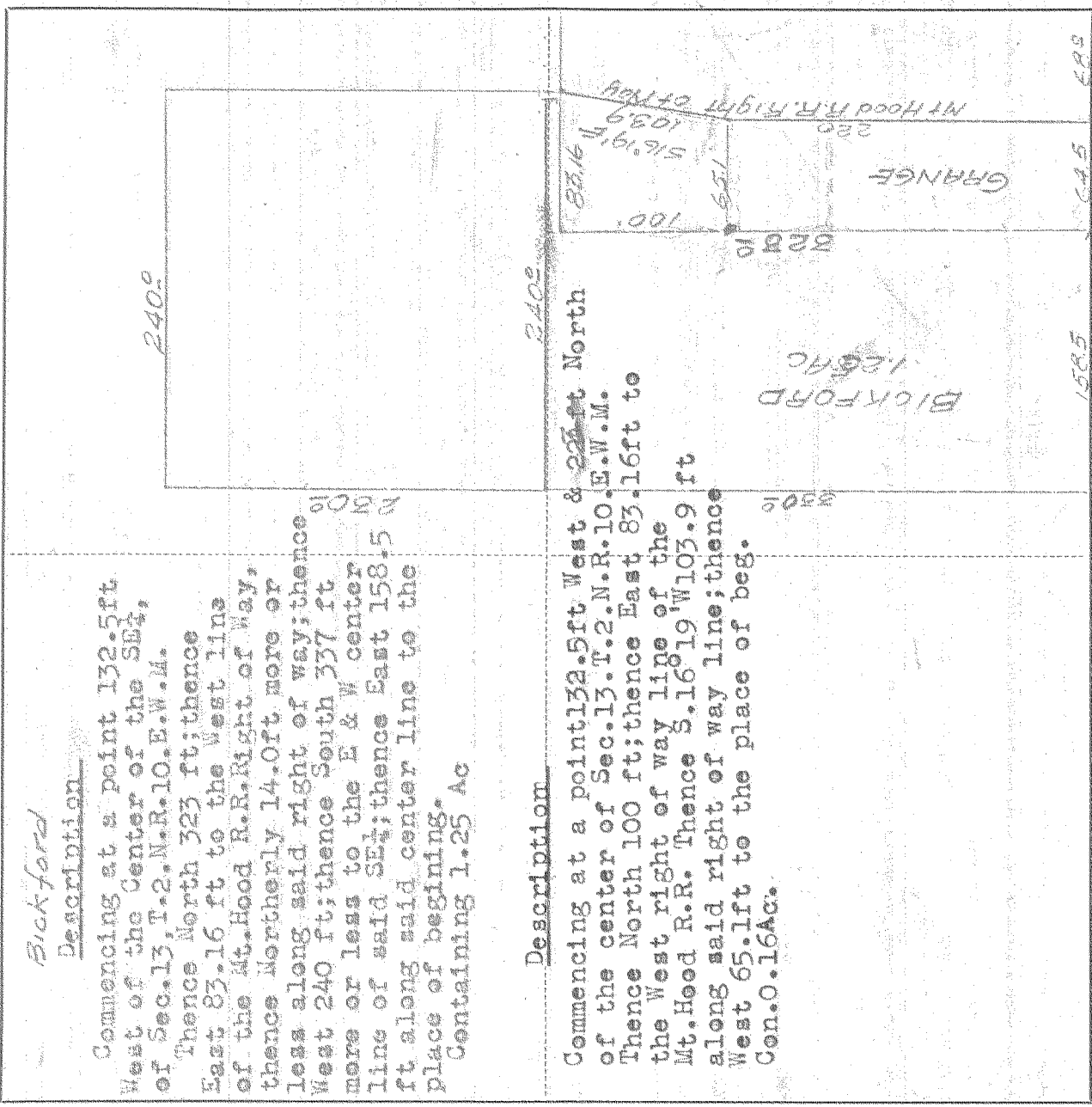


SURVEY IN SE 1/4 SEC 13, TWP. 2 North RANGE 10 EAST W. M.

FOR Clay Bickford DATE May 22, 41



Scale 1 inch = 100 ft

I do hereby certify that this sketch was made from notes taken during an actual survey by me on May 21 19 41, and that it correctly represents the field work of said survey.

C. M. Hurlbut  
County Surveyor  
Hood River County, Oregon

14

Helpers

0401 # 4-108

KURAN 14692