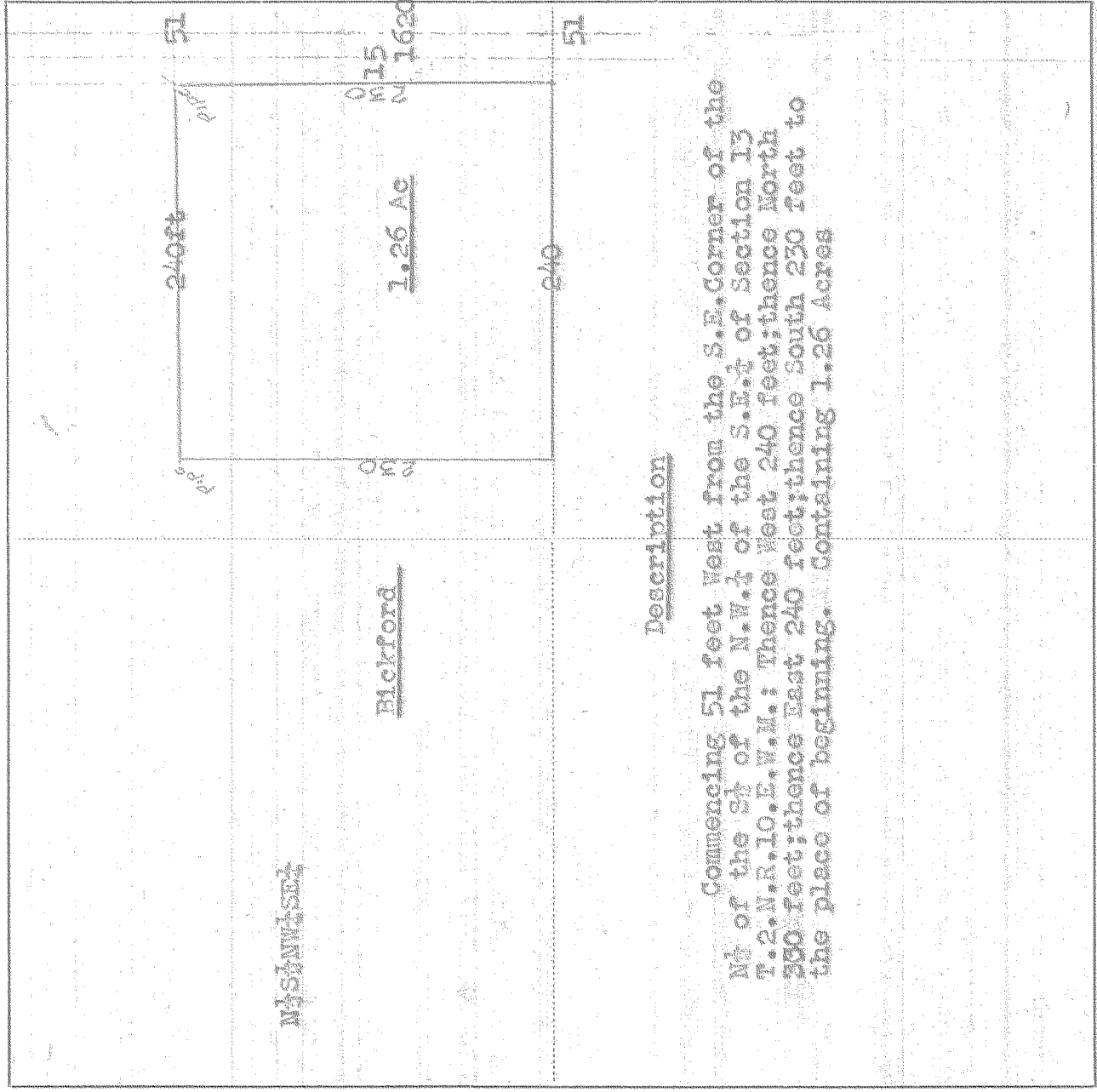


SURVEY IN W2 of S1 NW1, SE1, SE2, SECT. 13, TWP. 2 N., RANGE 10, EAST W. M.

FOR Clay Bickford DATE 6/27/35



Description

Commencing 51 feet West from the S.E. Corner of the N1 of the S1 of the N.W. 1/4 of the S.E. 1/4 of Section 13 T. 2. N. R. 10. E. W. M.; Thence West 240 feet; thence North 230 feet; thence East 240 feet; thence South 230 feet to the place of beginning. Containing 1.26 Acres

Scale: 1 inch = 100 feet

I do hereby certify that this sketch was made from notes taken during an actual survey by me on June 27, 1935, and that it correctly represents the field work of said survey.

County Surveyor  
Hood River County, Oregon

Helpers Clay Bickford 0399

# 4-109

12