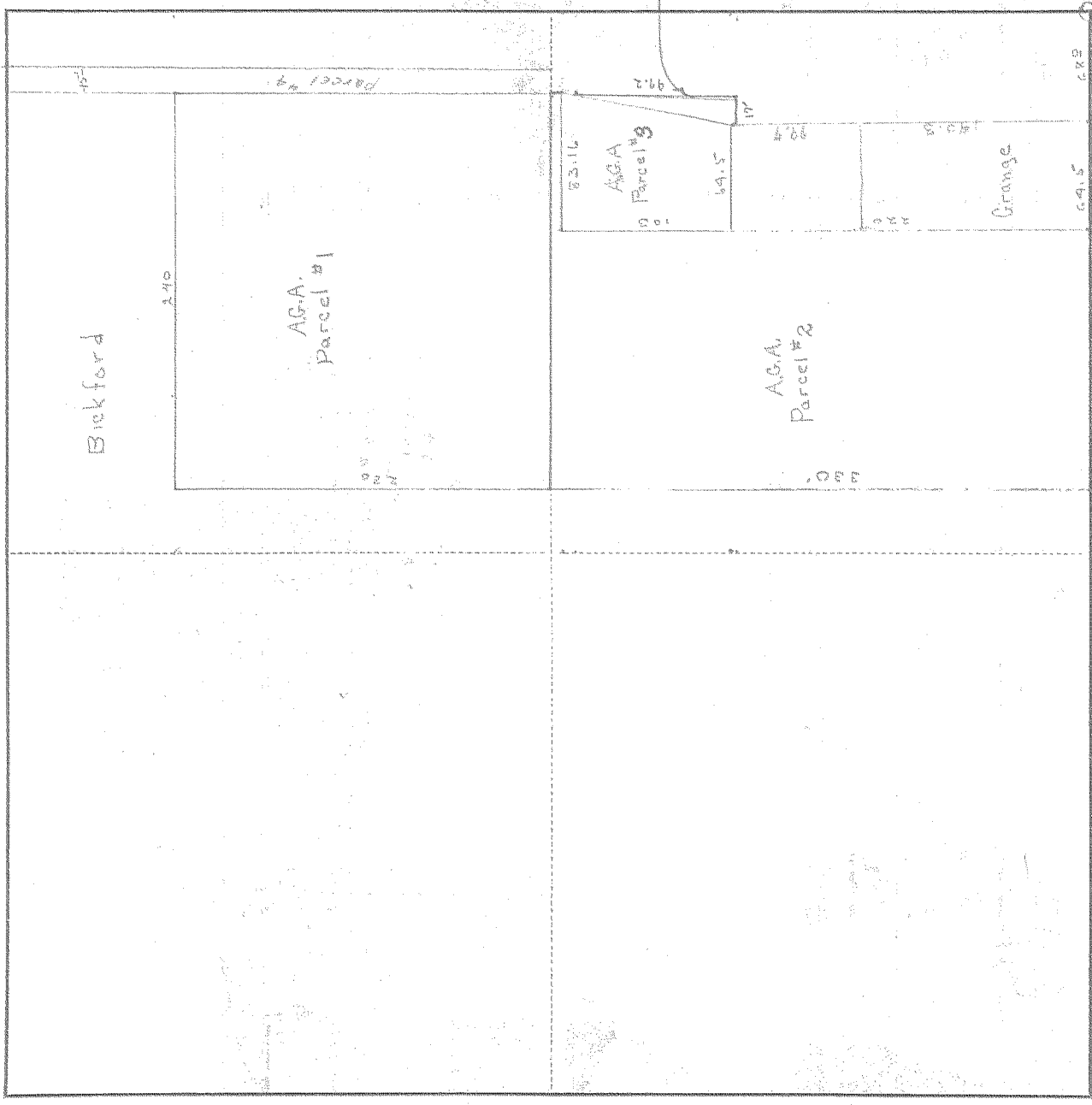


SURVEY IN NW 1/4 SE 1/4, SECT. 13, TWP. 2 IV, RANGE 10, EAST W. M.

FOR A G A DATE Hill



Scale 1 inch =

I do hereby certify that this sketch was made from notes taken during an actual survey by me on 19, and that it correctly represents the field work of said survey.

2

County Surveyor  
Hood River County, Oregon

Helpers

KILHAM 10287

0396 # 4-111