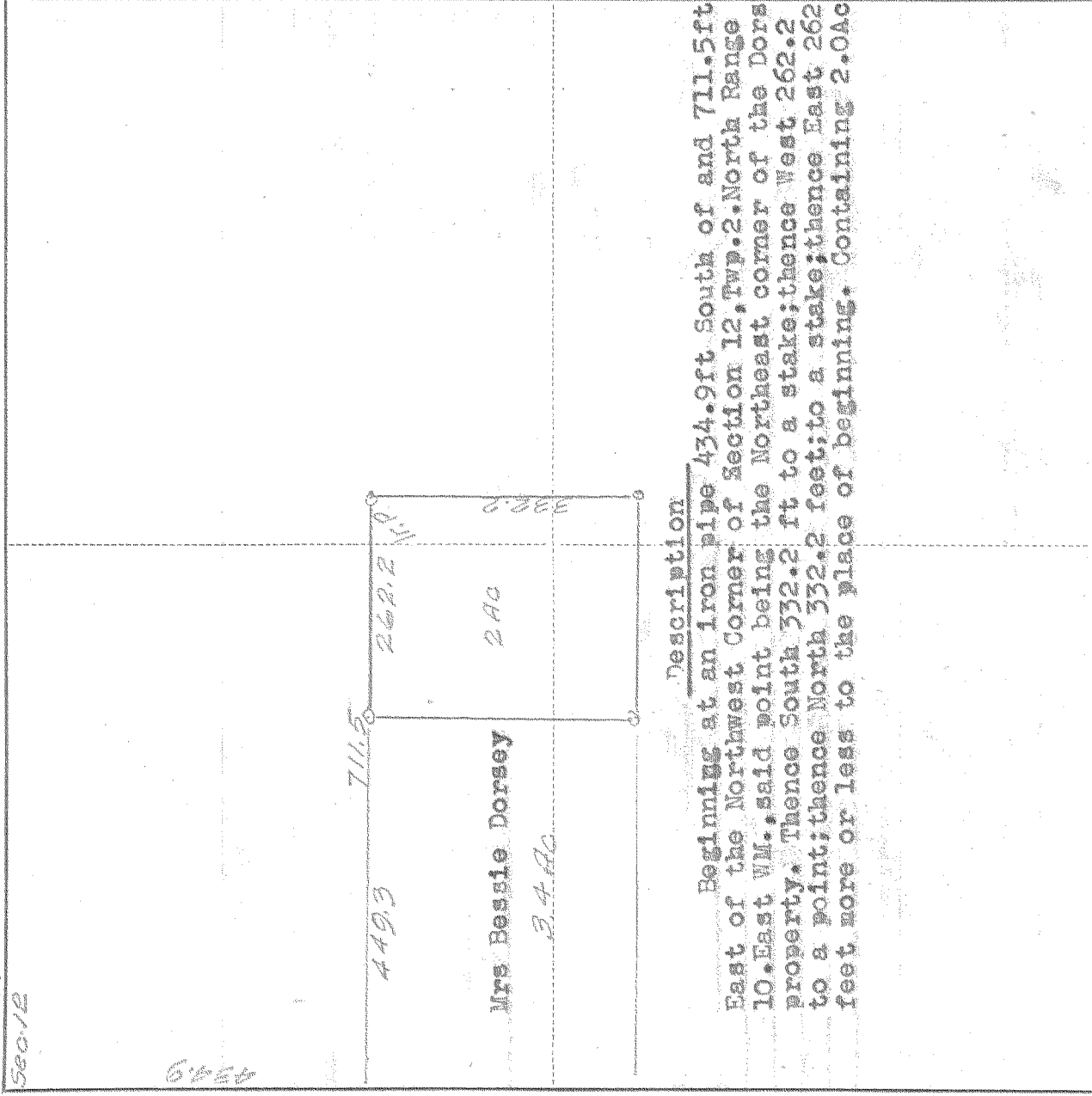


Plat and Description of  
SURVEY IN NW 1/4, SECT. 12, TWP. 2. North RANGE 10, EAST W. M.

FOR Mrs Bessie Dorsey DATE June 13, 1946

NMCOR  
500.12



Scale 1 inch = 200 feet

I do hereby certify that this sketch was made from notes taken during an actual survey by me Deputy Surveyor on June 12 1946, and that it correctly represents the field work of said survey.

C. M. Harlburt  
County Surveyor  
Hood River County, Oregon

6

Helpers W. H. Murphy and Douglas Button-Deputy Surveyor

KELHAM 19087

0378 #4-163