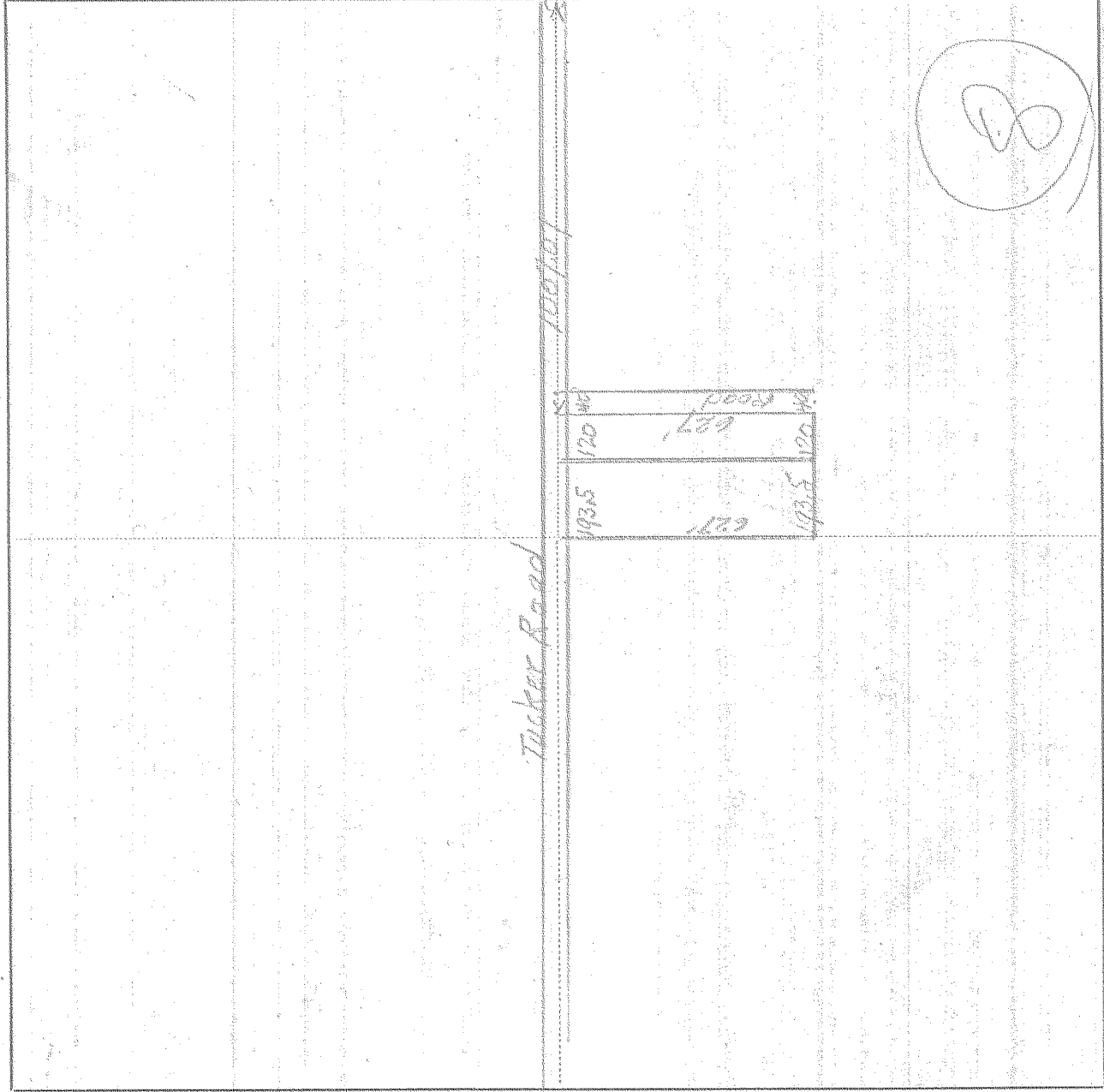


SURVEY IN Highland Subdiv., SECT. 11, TWP. 2 N, RANGE 10, EAST W. M.

FOR Max Neff DATE Aug 2, 1947



Scale 1 inch = 400'

I do hereby certify that this sketch was made from notes taken during an actual survey by me on Aug 2, 1947, and that it correctly represents the field work of said survey.

Edwin Johnson
County Surveyor
Hood River County, Oregon

Helpers Max Neff

0365 # 4100