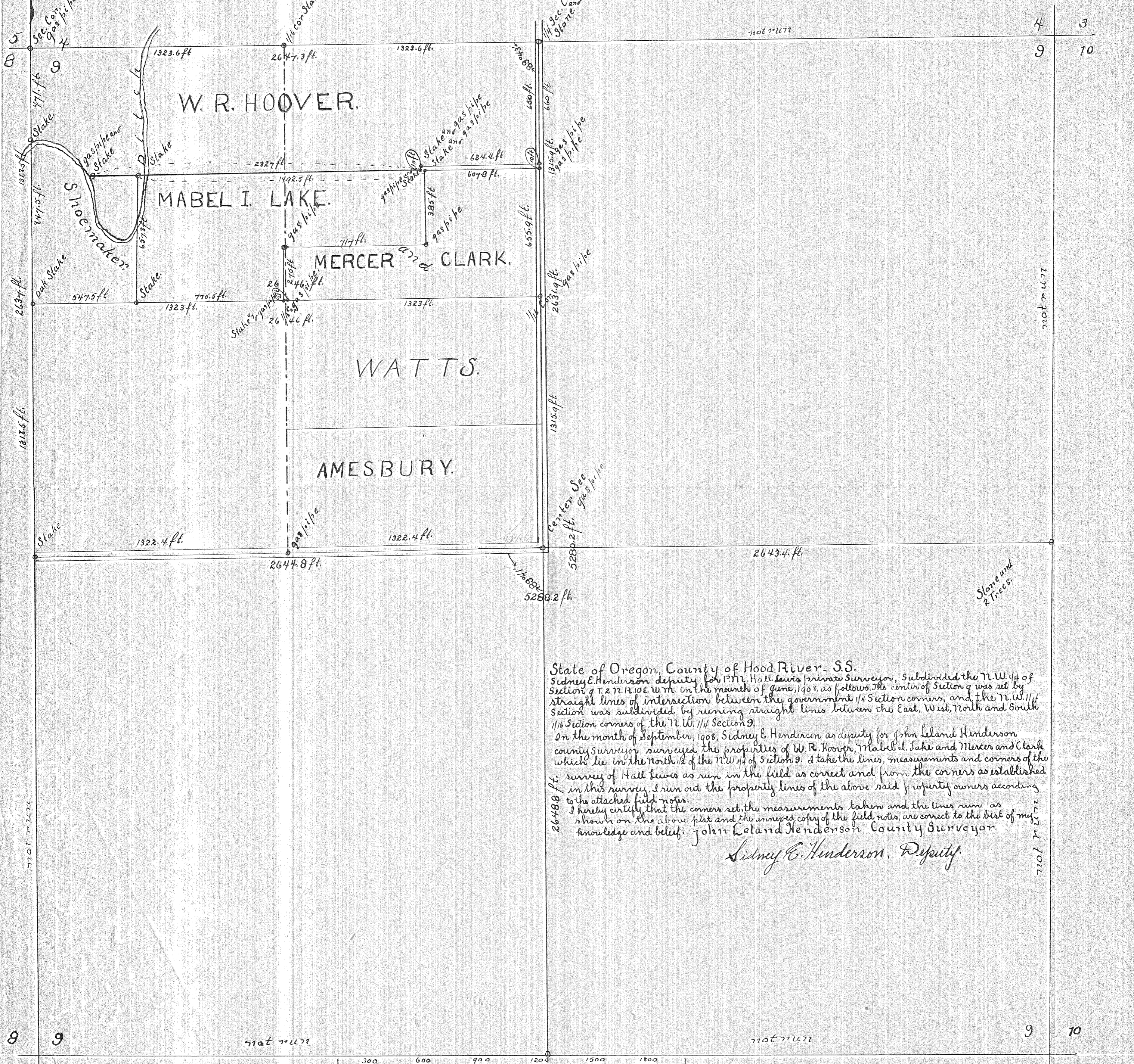


Plat of W. R. Hoovers and others Land in Section 9 T.29N. R.10E. W. 10. W. in Hood River County, Oregon, after a Survey made by S. E. Henderson Deputy for John Leland Henderson, County Surveyor.



State of Oregon, County of Hood River - S.S.
 Sidney E. Henderson deputy for P.M. Hall Lewis private Surveyor, subdivided the N.W. 1/4 of Section 9 T.29N. R.10E. W. 10. W. in the month of June, 1908, as follows. The center of Section 9 was set by straight lines of intersection between the government 1/4 Section corners, and the N.W. 1/4 Section was subdivided by running straight lines between the East, West, North and South 1/16 Section corners of the N.W. 1/4 Section 9.
 On the month of September, 1908, Sidney E. Henderson as deputy for John Leland Henderson county surveyor, surveyed the properties of W. R. Hoover, Mabel I. Lake and Mercer and Clark which lie in the North 1/2 of the N.W. 1/4 of Section 9. I take the lines, measurements and corners of the survey of Hall Lewis as run in the field as correct and from the corners as established in this survey. I run out the property lines of the above said property owners according to the attached field notes.
 I hereby certify that the corners set, the measurements taken and the lines run as shown on the above plat and the annexed copy of the field notes are correct to the best of my knowledge and belief.
 John Leland Henderson County Surveyor.
 Sidney E. Henderson, Deputy.

