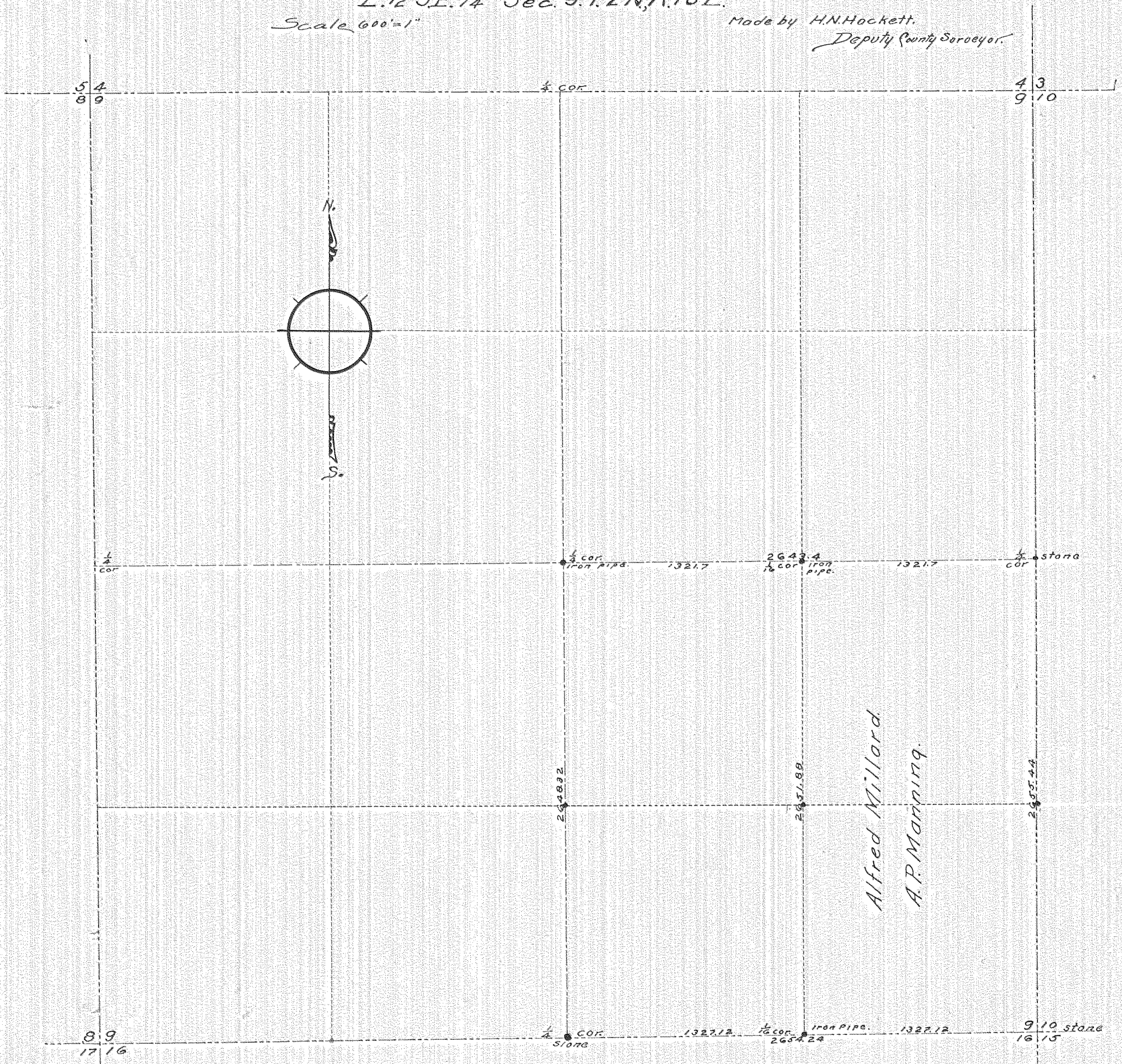


From the office of  
**JOHN LELAND HENDERSON**  
(Incorporated)  
Hood River, Oregon

Survey for  
**A.P. Manning & Alfred Millard**  
in  
**E. 1/2 SE. 1/4 Sec. 9. T. 2N, R. 10E.**  
Scale 600' = 1"

Made by **H.N. Hockett**,  
Deputy County Surveyor.



#4-067 0341 #32