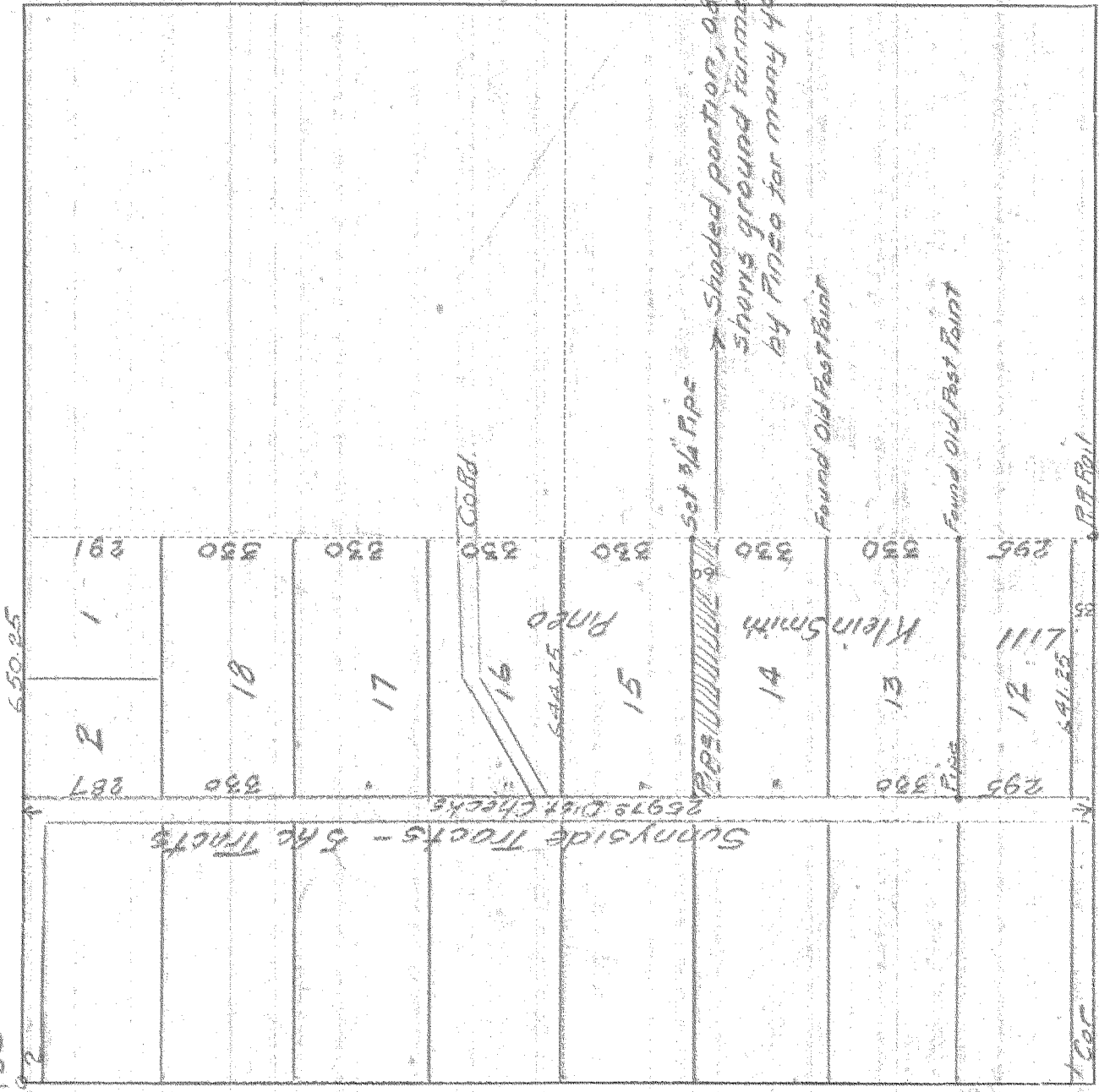


#5

SURVEY IN NW 1/4 SECT. 2 TWP. 2N R. 1 RANGE 10 EAST W. M.

FOR Miss Bertha Kleinsmith DATE 5/3/33

34 | 35



I do hereby certify that this sketch was made from notes taken during an actual survey made by me on May 3 1932, and that it correctly represents field work of said survey.

C. M. Hurlbert

County Surveyor
Hood River County, Oregon

Helpers *Ed. Nelson*

4-ent 0386