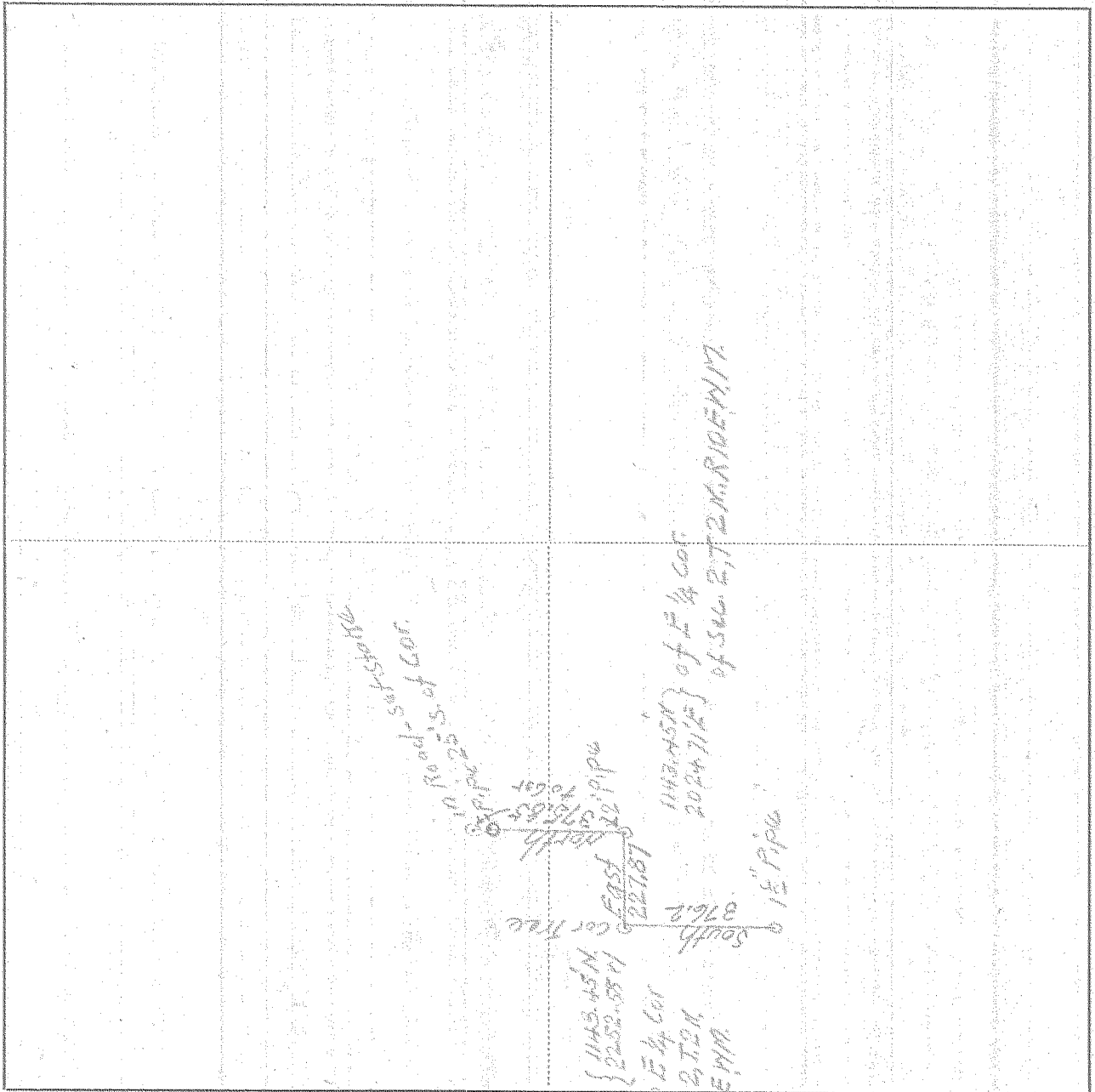


12

SURVEY IN E 1/4, SECT. 2, TWP. 2 N, RANGE 10, EAST W. M.

FOR Tom Scott DATE Nov. 24, 1950



Scale 1 inch = 400ft

I do hereby certify that this sketch was made from notes taken during an actual survey by me on Nov 21 1950, and that it correctly represents the field work of said survey.

Edwin Johnson
County Surveyor
Hood River County, Oregon

Helpers John Chipley

4619 0334