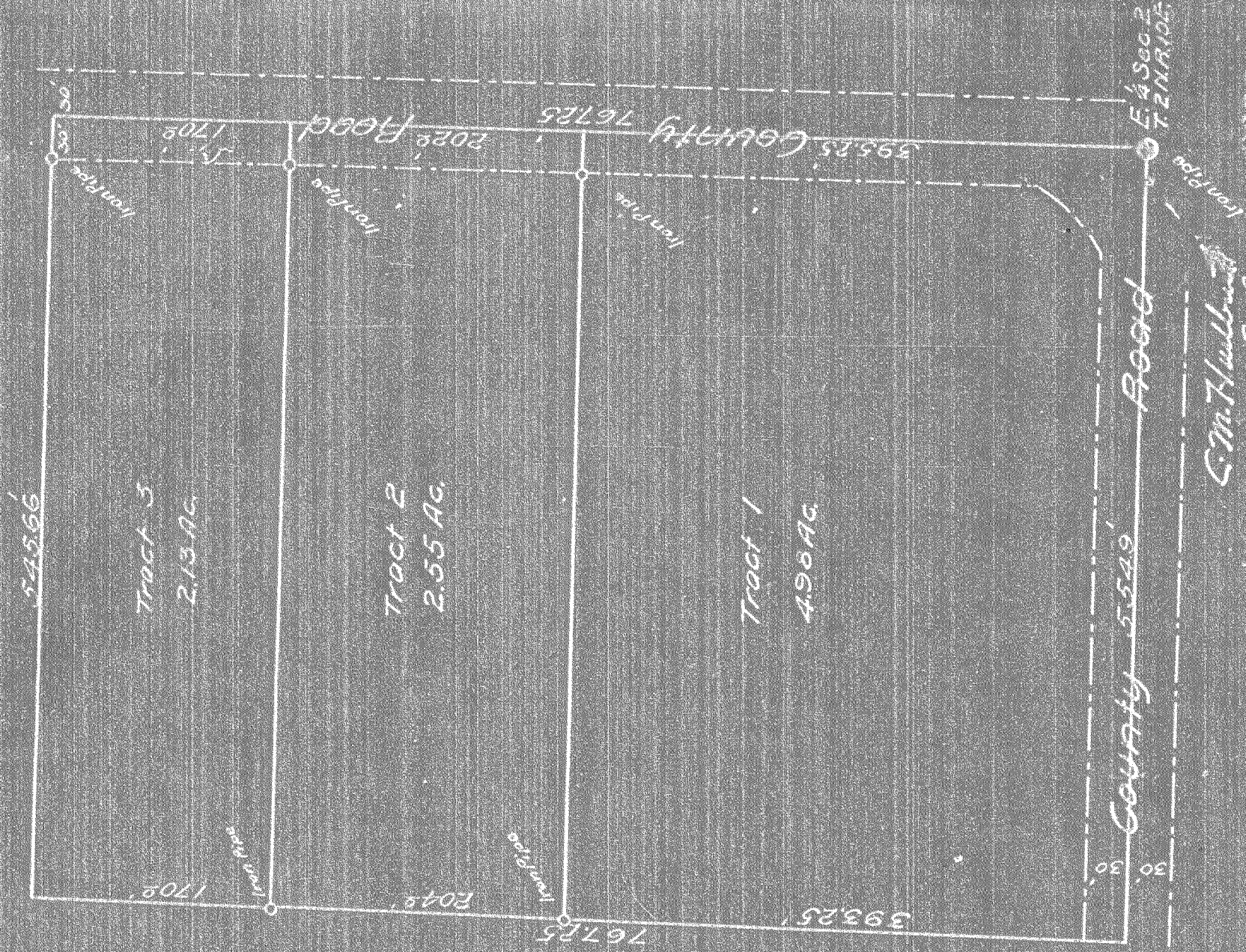


PLAT OF PROPERTY OF W.F. WITHAM
 IN S.E. 1/4 N.E. 1/4 Sec. 2, T. 2 N., R. 10 E., W. 11 M.
 Sept. 22, 1925 Scale: 1" = 100'



G.M. Hulbert
 P.M. - 6/15, Co. Sur.

0333