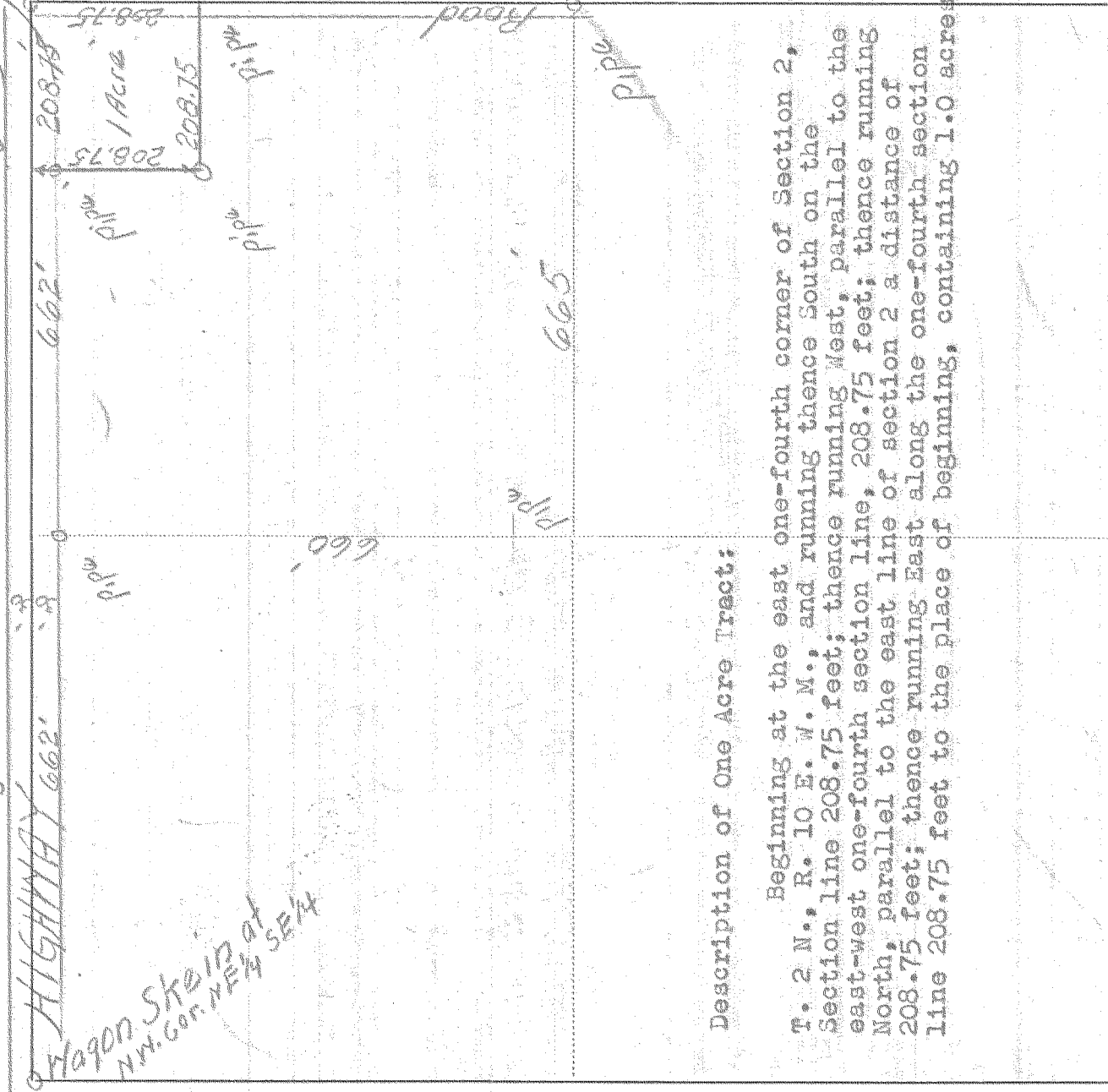


5978 #8

SURVEY IN NE 1/4 of SE 1/4, SECT. 2, TWP. 2 N., RANGE 10, EAST W. M.

FOR A.C. Trively

DATE May 6, 1950



Description of One Acre Tract:

Beginning at the east one-fourth corner of Section 2, T. 2 N., R. 10 E. W. M., and running thence South on the Section line 208.75 feet; thence running West, parallel to the east-west one-fourth section line, 208.75 feet; thence running North, parallel to the east line of section 2 a distance of 208.75 feet; thence running East along the one-fourth section line 208.75 feet to the place of beginning, containing 1.0 acres.

Scale 1 inch =

I do hereby certify that this sketch was made from notes taken during an actual survey by me on May 6, 1950, and that it correctly represents the field work of said survey.

Edw. Johnson
County Surveyor
Hood River County, Oregon

Helpers Ronald W. King

0328

4008