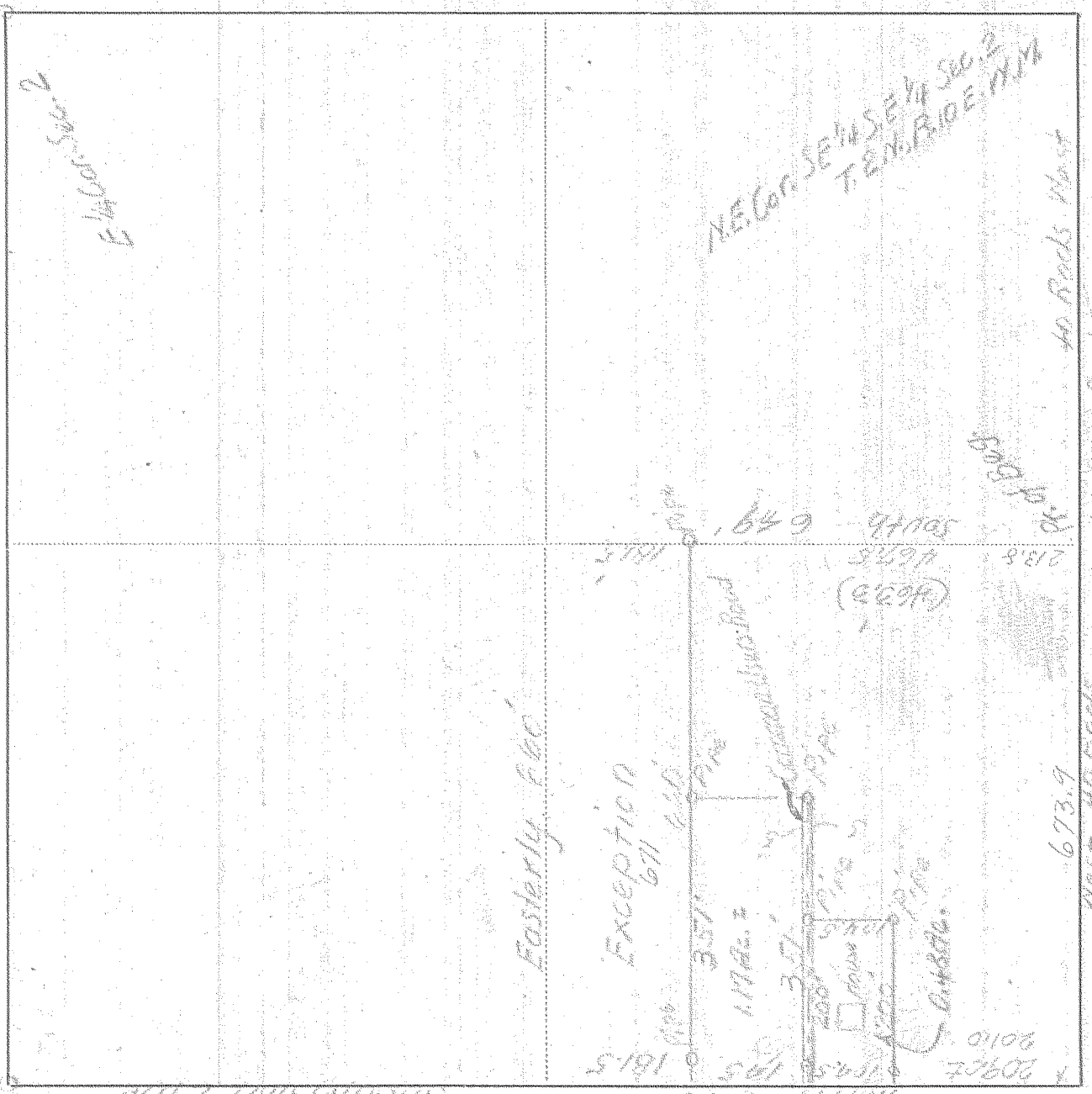


SURVEY IN 1/4 Sec 27, T. 21 N., R. 10 E., M. 1 RANGE 10 E. TWP. E. M. EAST W. M.

FOR East Bush DATE June 1, 1930



Scale 1 inch = 200 feet

I do hereby certify that this sketch was made from notes taken during an actual survey by me on June 1, 1930, and that it correctly represents the field work of said survey.

Edwin Johnson  
County Surveyor  
Hood River County, Oregon

Helpers Donald Gray 0326

244.5  
209  
453.5  
47-002