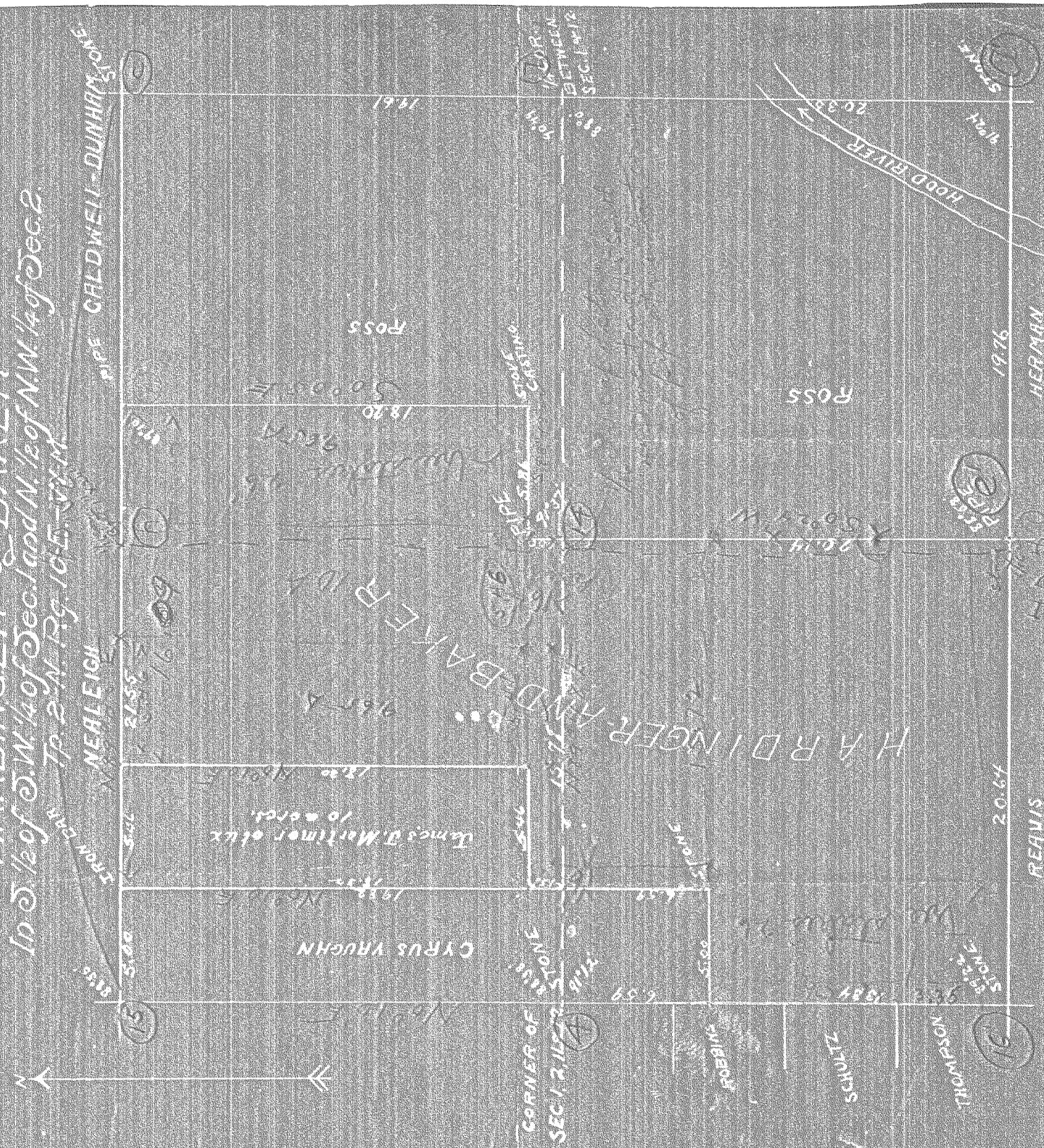


PLAT, SHOWING LANDS OF

HARDINGER & BAKER

In S. 1/2 of S.W. 1/4 of Dec. 1 and N. 1/2 of NW 1/4 of Dec. 2
T. 2 N. R. 9 E. W. 11



0323

\$4000

HOOD RIVER ABSTRACT No. Hood River Ore. 1216