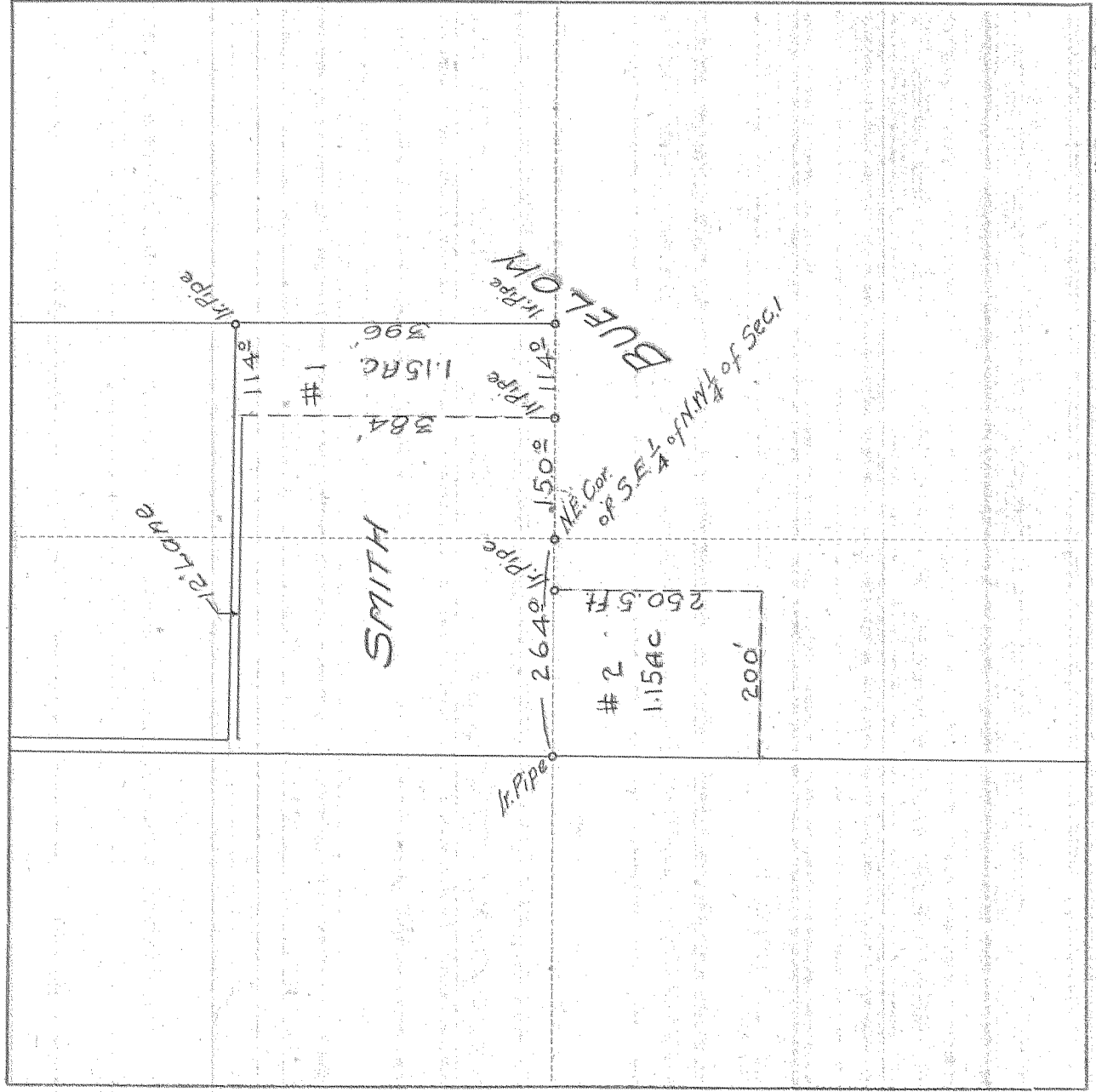


#10

SURVEY IN N 1/2, SECT. 1, TWP. 2 North RANGE 10 EAST W. M.

FOR SMITH & BUELOV

DATE Oct 22, 1928



Scale 1" = 200'

I do hereby certify that this sketch was made from notes taken during an actual survey made by me on 192, and that it correctly represents field work of said survey.

County Surveyor
Hood River County, Oregon

Helpers

0303

2-567