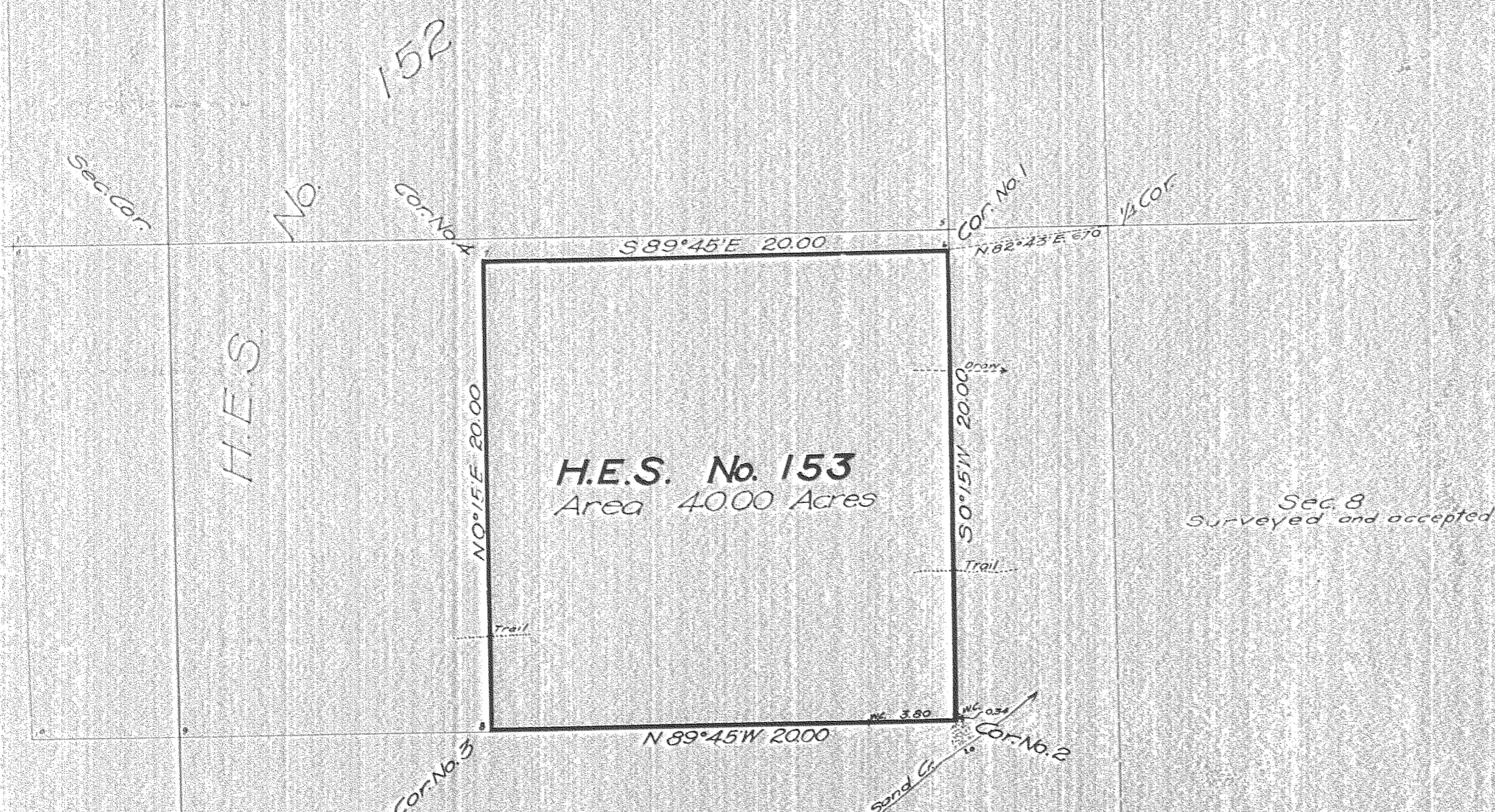


Survey accepted Feb. 26, 1918  
G.L.O.

T. 2 S., R. 10 E.  
Surveyed

Sec. 5  
Surveyed and accepted

Plat of  
**HOMESTEAD  
ENTRY SURVEY**  
No. 153  
in the  
**OREGON  
NATIONAL FOREST**  
in  
Sec. 8 Surveyed T. 2 S., R. 10 E.  
of the  
Willamette Meridian  
**OREGON**



Sec. 8  
Surveyed and accepted

This plat of Homestead Entry Survey  
No. 153 State of Oregon is  
strictly conformable to the field notes  
thereof on file in this office, which  
have been examined and approved.

U.S. Surveyor General's Office

Portland Oregon

October 31, 1917

*Edward A. Worsley*  
U.S. Surveyor General

Patent Issued **February 4, 1920**  
Patent No. **732953**  
Serial H. E. No. **010843**  
Land Office **The Dalles**  
Mining Sheet No. **294**

SCALE 5 chains to 1 inch

Surveys Designated	By whom Surveyed	Inst. Cont. Group		When Surveyed		Date of Approval
		No.	Date	Began	Completed	
H.E. Survey No. 153	K.P. Cecil	153	Aug. 24, 1914	July 7, 1916	July 8, 1916	Oct. 31, 1917
	Surveyor - Forest Service		Feb. 25, 1915			
H.E. Survey No. 152	K.P. Cecil		Aug. 24, 1914	July 5, 1916	July 7, 1916	Oct. 31, 1917
	Surveyor - Forest Service		Feb. 25, 1915			
Re-established S. Bdy. T. 13, R. 10 E.	Fred. Mensch, U.S.S.	Group 14	Aug. 20, 1912	1912-1913		Oct. 15, 1914
Subdivisions T. 23, R. 10 E.	"	"	"	"	"	"

Areas in Acres	
H.E. Survey No. 153	Conflicts
In Section 8	40.00
In Section	
In Section	
In Section	
Total	40.00

Act of June 11, 1906	Act of Aug. 11, 1916
List No. 1975	Dated Nov. 4, 1908
6-1023	Aug. 20, 1913
Latitude 45° 25' N	Observations at
Longitude 121° 52' W	Corner No. 4
Mean Mag. Decl. 22° 25' E	

clm ink on 4-590 B.

1281  
# 5-601