

Survey accepted Feb. 26, 1918.  
G.L.O.

T. 2 S., R. 10 E.  
Surveyed

Plat of  
**HOMESTEAD  
ENTRY SURVEY**

No. 152

in the

**OREGON  
NATIONAL FOREST**

in

Section 5, surveyed, T. 2 S., R. 10 E.  
Section 6, surveyed, T. 2 S., R. 10 E.  
Section 7, surveyed, T. 2 S., R. 10 E.  
Section 8, surveyed, T. 2 S., R. 10 E.

of the

**WILLAMETTE MERIDIAN  
OREGON**

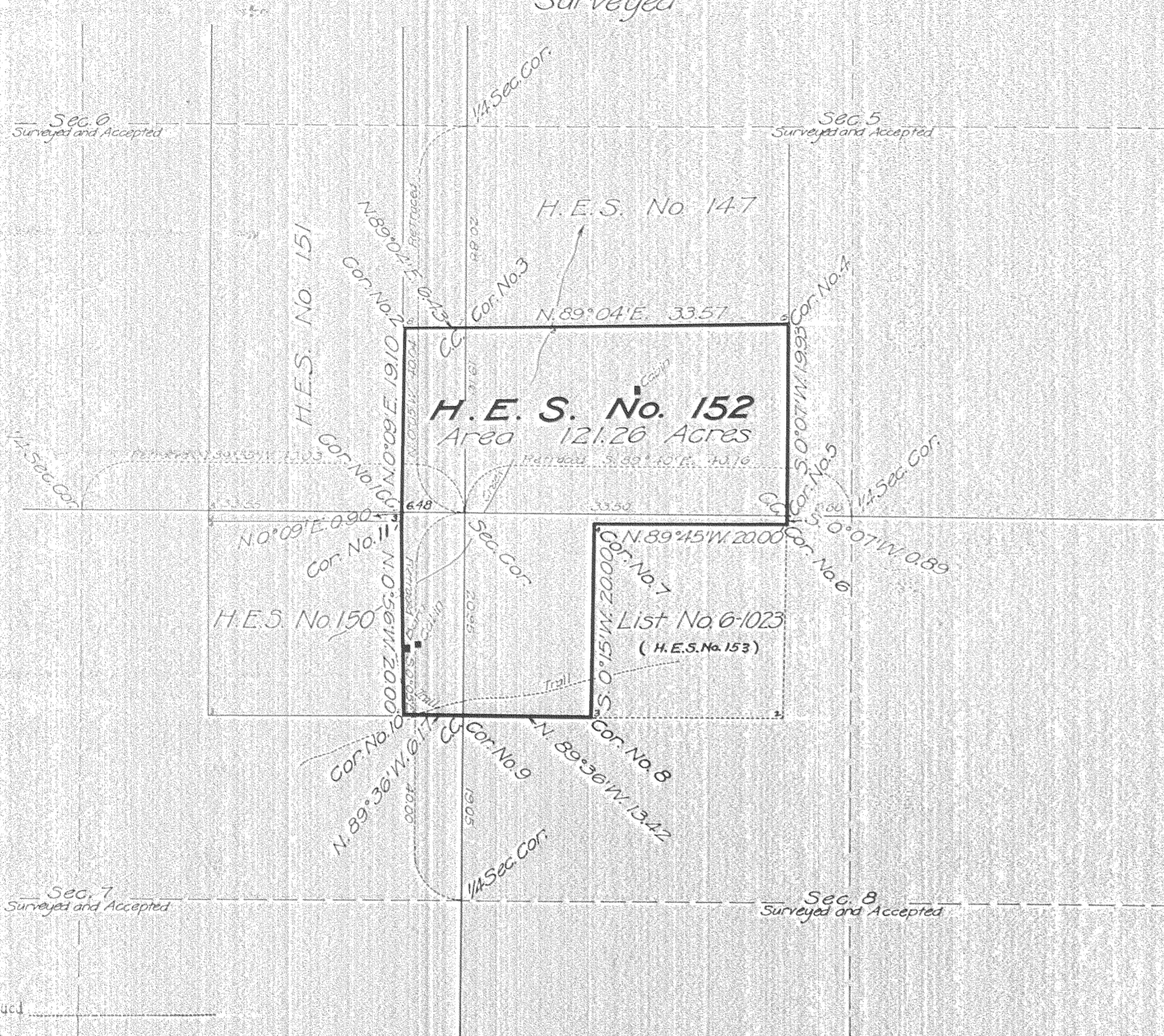
This plat of Homestead Entry Survey  
No. 152, State of Oregon, is  
strictly conformable to the field notes  
thereof on file in this office, which  
have been examined and approved.

U.S. Surveyor General's Office

Portland, Oregon

October 31, 1917

*Edward J. Worsell*  
U.S. Surveyor General



Patent issued \_\_\_\_\_  
Patent No. \_\_\_\_\_  
Serial H. E. No. \_\_\_\_\_  
Land Office \_\_\_\_\_  
Mining Sheet No. **294**

SCALE 10 chains to 1 inch

Surveys Designated	By whom Surveyed	Inst. Cont. Group		When Surveyed		Date of Approval
		No.	Date	Begin.	Completed	
H.E. Survey No. 152	H. P. Cecil			July 5, 1910	July 7, 1910	Oct. 31, 1917
H.E. Survey No. 150	Surveyor-General Service		Aug. 24, 1914	June 27, 1910	July 3, 1910	Oct. 31, 1917
H.E. Survey No. 151	"		Feb. 25, 1915	June 27, 1910	June 29, 1910	Oct. 31, 1917
H.E. Survey No. 147	"			July 5, 1910	July 6, 1910	Oct. 31, 1917
Re-established by T. 13, R. 10 E.	Fred. Mensch, U.S.S.	Group	Aug. 20, 1912	1912-1913		Oct. 15, 1914
Subdivisions T. 2 S., R. 10 E.	"	"	"	"	"	"

H.E. Survey No.	Areas in Acres	
	5	Conflicts
In Section 5	65.60	
In Section 6	12.37	
In Section 7	13.26	
In Section 8	30.03	
Total	121.26	

Act of June 11, 1906	Act of Aug. 11, 1916
List No. 6-443	Dated Nov. 4, 1908
6-1022	Sept. 28, 1910
	Aug. 20, 1913
Latitude	45° 25' N.
Longitude	121° 33' W.
Mean Mag. Decl.	22° 25' E.
	Observations at Corner No. 2

*See book on 4-590 B.*

0285  
# 5-600