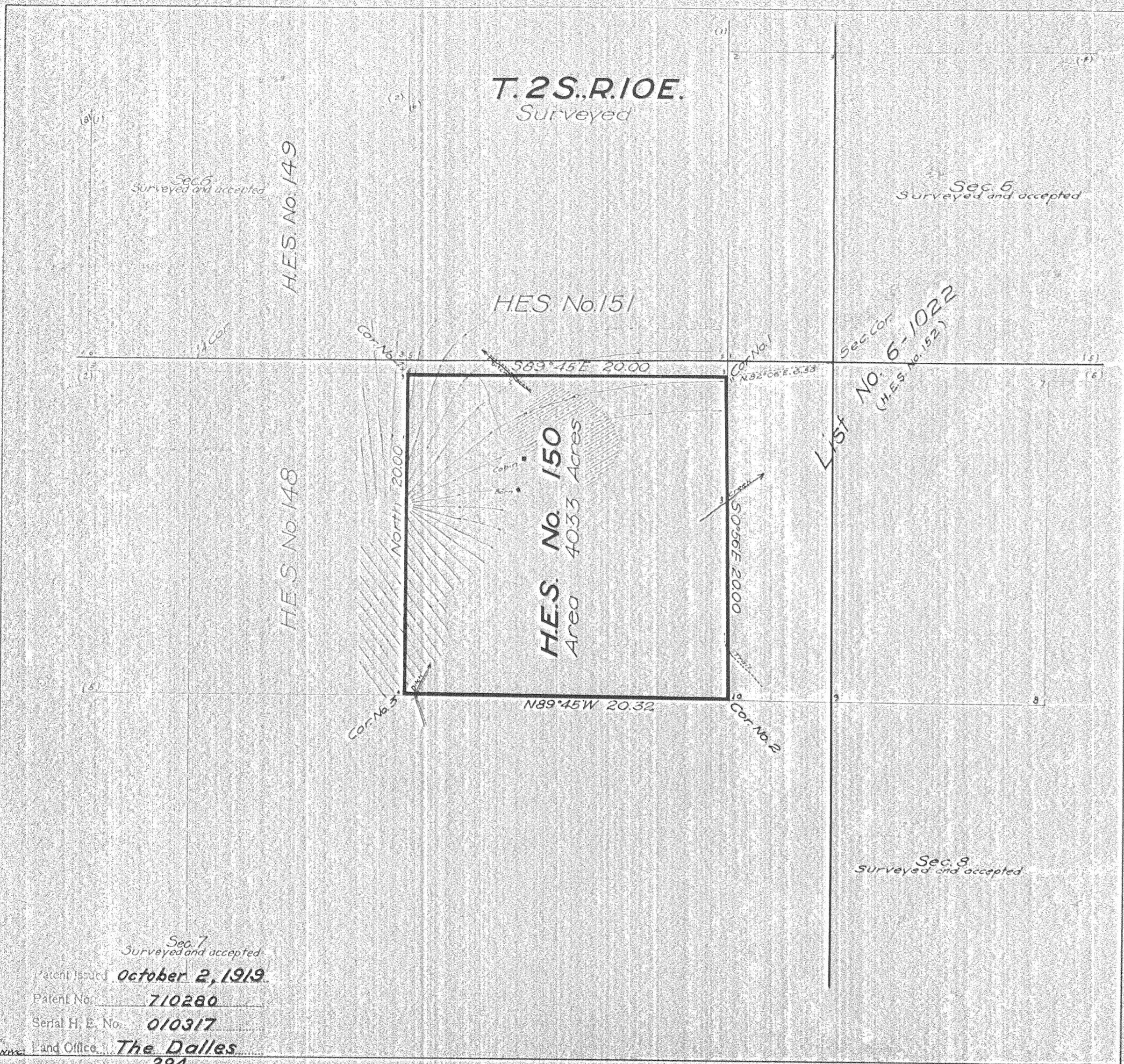


Survey accepted Feb. 26, 1919
G.L.O.



Plat of
**HOMESTEAD
ENTRY SURVEY**
No. 150
in the
**OREGON
NATIONAL FOREST**
in
Sec. 7 Surveyed T. 2S. R. 10E.
of the
Willamette Meridian
OREGON

This plat of Homestead Entry Survey
No. 150 State of Oregon is
strictly conformable to the field notes
thereof on file in this office, which
have been examined and approved.
U.S. Surveyor General's Office
Portland, Oregon
October 31, 1917

Edward A. Wood
U.S. Surveyor General

Sec. 7
Surveyed and accepted
Patent Issued **October 2, 1919**
Patent No. **710280**
Serial H. E. No. **010317**
Land Office **The Dalles**
Mining Sheet No. **294**

Sec. 8
Surveyed and accepted

SCALE 5 chains to Inch

Surveys Designated	By whom Surveyed	Inst. Cont. Group		When Surveyed		Date of Approval
		No.	Date	Begin	Completed	
H.E. Survey No. 150	K. P. Cecil	150	Aug. 24, 1914	June 27, 1916	July 3, 1916	Oct. 31, 1917
	Surveyor - Forest Service		Feb. 25, 1915			
H.E. Survey No. 151	K. P. Cecil		Aug. 24, 1914	June 27, 1916	June 29, 1916	Oct. 31, 1917
	Surveyor - Forest Service		Feb. 25, 1915			
H.E. Survey No. 148	K. P. Cecil		Aug. 24, 1914	June 27, 1916	July 1, 1916	Oct. 31, 1917
	Surveyor - Forest Service		Feb. 25, 1915			
H.E. Survey No. 149	"		Aug. 24, 1914	June 27, 1916	June 30, 1916	Oct. 31, 1917
	Surveyor - Forest Service		Feb. 25, 1915			
Re-establish S. Bdy. T. 1S., R. 10E.	Fred Mensch, U.S.C.	Group 74	Aug. 20, 1912	1912-1913		Oct. 15, 1914
Subdivisions T. 2S., R. 10E.	"	"	"	"	"	"

Areas in Acres		Conflicts
H. E. Survey No.	150	
In Section	7	40.33
In Section		
In Section		
Total		40.33

Act of June 11, 1906	Act of March 4, 1915
List No. 1975	Dated Aug. 11, 1916
6-1020	Nov. 4, 1908
	Aug. 20, 1913
Latitude 45° 25' N	Observations at
Longitude 121° 33' W	Corner No. 4
Mean Mag. Decl. 22° 25' E	

Am ink on 4-570 B.

1284
5-594