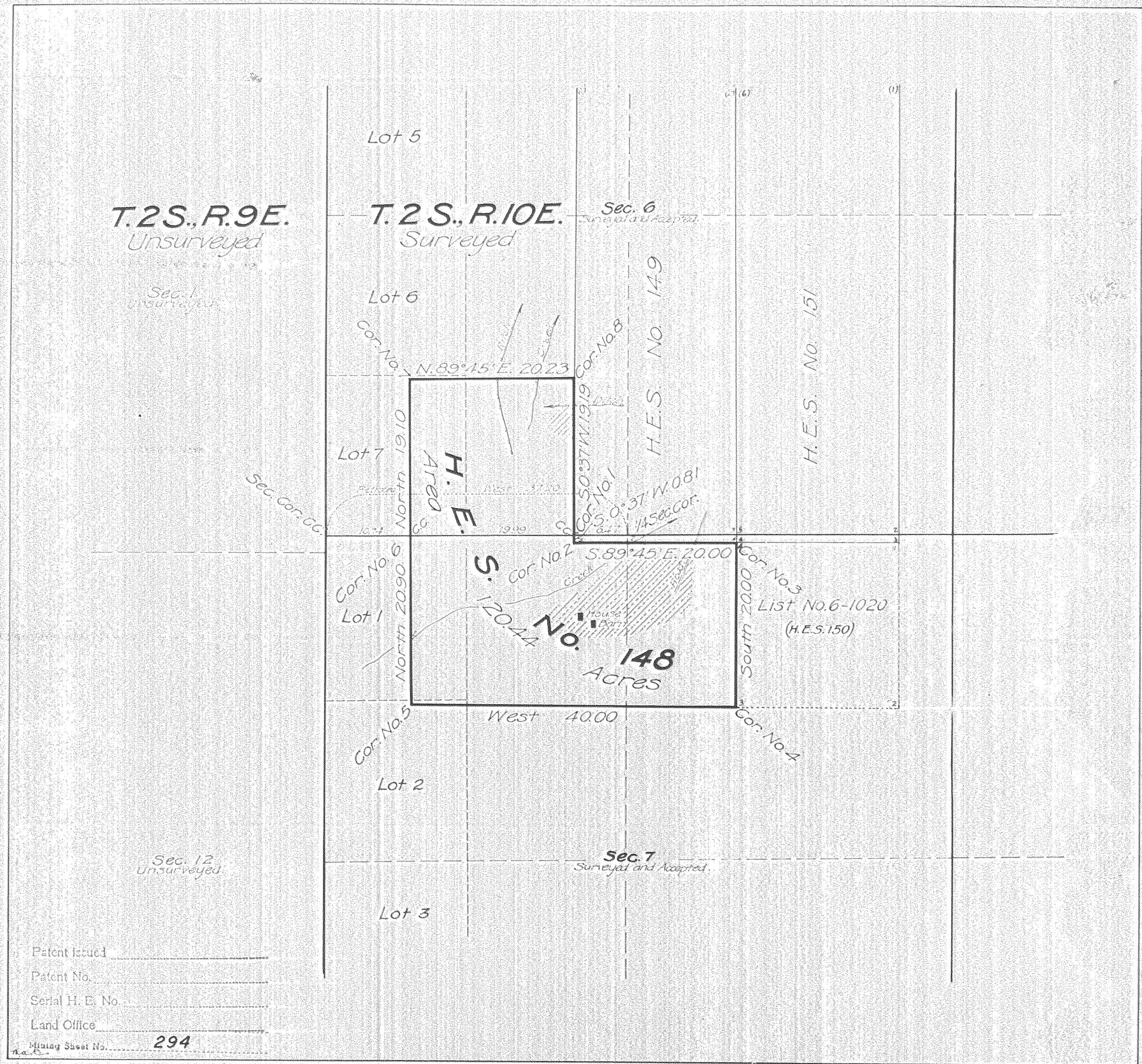


Survey accepted Feb. 26, 1918  
G.L.O.



Plat of  
**HOMESTEAD  
 ENTRY SURVEY**  
 No. 148  
 in the  
**OREGON  
 NATIONAL FOREST**  
 in  
 Section 6, surveyed, T.2S., R.10E.  
 Section 7, surveyed, T.2S., R.10E.  
 of the  
**WILLAMETTE MERIDIAN  
 OREGON**

This plat of Homestead Entry Survey No. 148, State of Oregon, is strictly conformable to the field notes thereof on file in this office, which have been examined and approved.

U.S. Surveyor General's Office  
 Portland, Oregon.  
 October 31, 1917

*Edward W. Wente*  
 U.S. Surveyor General

Patent issued \_\_\_\_\_  
 Patent No. \_\_\_\_\_  
 Serial H. E. No. \_\_\_\_\_  
 Land Office \_\_\_\_\_  
 Mining Sheet No. **294**

SCALE 10 chains to 1 inch

| Surveys Designated              | By whom Surveyed          | Inst., Cont. Group |               | When Surveyed |               | Date of Approval |
|---------------------------------|---------------------------|--------------------|---------------|---------------|---------------|------------------|
|                                 |                           | No.                | Date          | Began         | Completed     |                  |
| H.E. Survey No. 148             | K. P. Cecil               | 148                | Aug. 24, 1914 | June 27, 1916 | July 1, 1916  | Oct. 31, 1917    |
|                                 | Surveyor - Forest Service |                    | Feb. 25, 1915 |               |               |                  |
| H.E. Survey No. 149             | K. P. Cecil               |                    | Aug. 24, 1914 | June 27, 1916 | June 30, 1916 | Oct. 31, 1917    |
|                                 | Surveyor - Forest Service |                    | Feb. 25, 1915 |               |               |                  |
| H.E. Survey No. 151             | K. P. Cecil               |                    | Aug. 24, 1914 | June 27, 1916 | June 29, 1916 | Oct. 31, 1917    |
|                                 | Surveyor - Forest Service |                    | Feb. 25, 1915 |               |               |                  |
| Re-established by T.2S., R.10E. | Fred Mensch, U.S.S.       | Group              | Aug. 20, 1912 | 1912-1913     |               | Oct. 15, 1914    |
| Subdivisions T.2S., R.10E.      | "                         | "                  | "             | "             | "             | "                |

| Areas in Acres  |        | Conflicts |
|-----------------|--------|-----------|
| H.E. Survey No. | 148    |           |
| In Section 6    | 38.52  |           |
| In Section 7    | 81.92  |           |
| In Section      |        |           |
| In Section      |        |           |
| Total           | 120.44 |           |

|                      |                            |
|----------------------|----------------------------|
| Act of June 11, 1906 | Act of March 4, 1915       |
|                      | Aug. 11, 1916              |
| List No. 1975        | Dated Nov. 4, 1908         |
| 6-1018               | Aug. 20, 1913              |
| Latitude             | 45° 25' N. Observations at |
| Longitude            | 121° 33' W. Corner No. 3.  |
| Mean Mag. Decl.      | 22° 25' E.                 |

in ink on 4-590 B