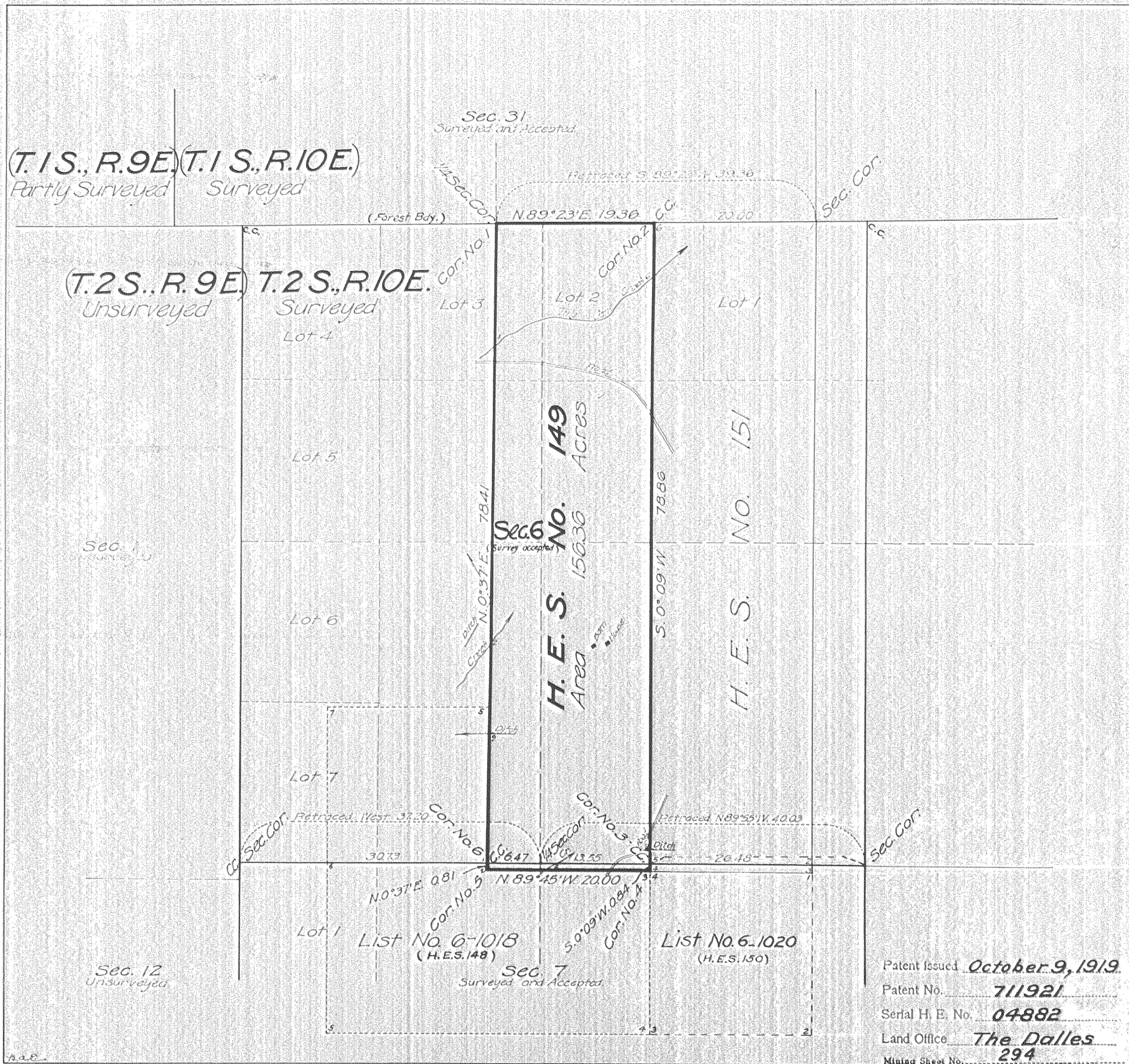


Survey accepted Feb. 26, 1919.
G.L.O.



Plat of
**HOMESTEAD
ENTRY SURVEY**
No. 149
in the
OREGON
NATIONAL FOREST
in
Section 6, surveyed, T.2S., R.10E.
Section 7, surveyed, T.2S., R.10E.
of the
WILLAMETTE MERIDIAN
OREGON

This plat of Homestead Entry Survey No. 149 State of Oregon is strictly conformable to the field notes thereof on file in this office, which have been examined and approved.
U.S. Surveyor General's Office
Portland, Oregon.
October 31, 1917

Edward deWitt
U.S. Surveyor General

Patent issued October 9, 1919.
Patent No. 711921
Serial H. E. No. 04882
Land Office The Dalles
Mining Sheet No. 294

SCALE 10 chains to Inch

Surveys Designated	By whom Surveyed	Inst. Cont. Group		When Surveyed		Date of Approval
		No.	Date	Begin	Completed	
H.E. Survey No. 149	K. P. Ceall	149	Aug. 24, 1914	June 27, 1916	June 30, 1916	Oct. 31, 1917
	Surveyor Forest Service		Feb. 25, 1915			
H.E. Survey No. 151	K. P. Ceall		Aug. 24, 1914	June 27, 1916	June 29, 1916	Oct. 31, 1917
	Surveyor Forest Service		Feb. 25, 1915			
Re-establish Bdy. T.1S., R.10E.	Fred Mensch, U.S.S.	Group 14P	Aug. 20, 1912	1912-1913		Oct. 15, 1914
Subdivisions T.2S., R.10E.	"	"	"	"	"	"

Areas in Acres	
H.E. Survey No. 149	Conflicts
In Section 6	154.70
In Section 7	1.06
In Section	
In Section	
Total	156.36

Act of June 11, 1906 Act of March 4, 1915
List No. 6-1019 Dated Nov. 4, 1908
Aug. 20, 1913.
Latitude 45° 25' N Observations at
Longitude 121° 33' W Corner No. 4.
Mean Mag. Decl. 22° 25' E.

See map on 4-590 B.

0281 #S-591