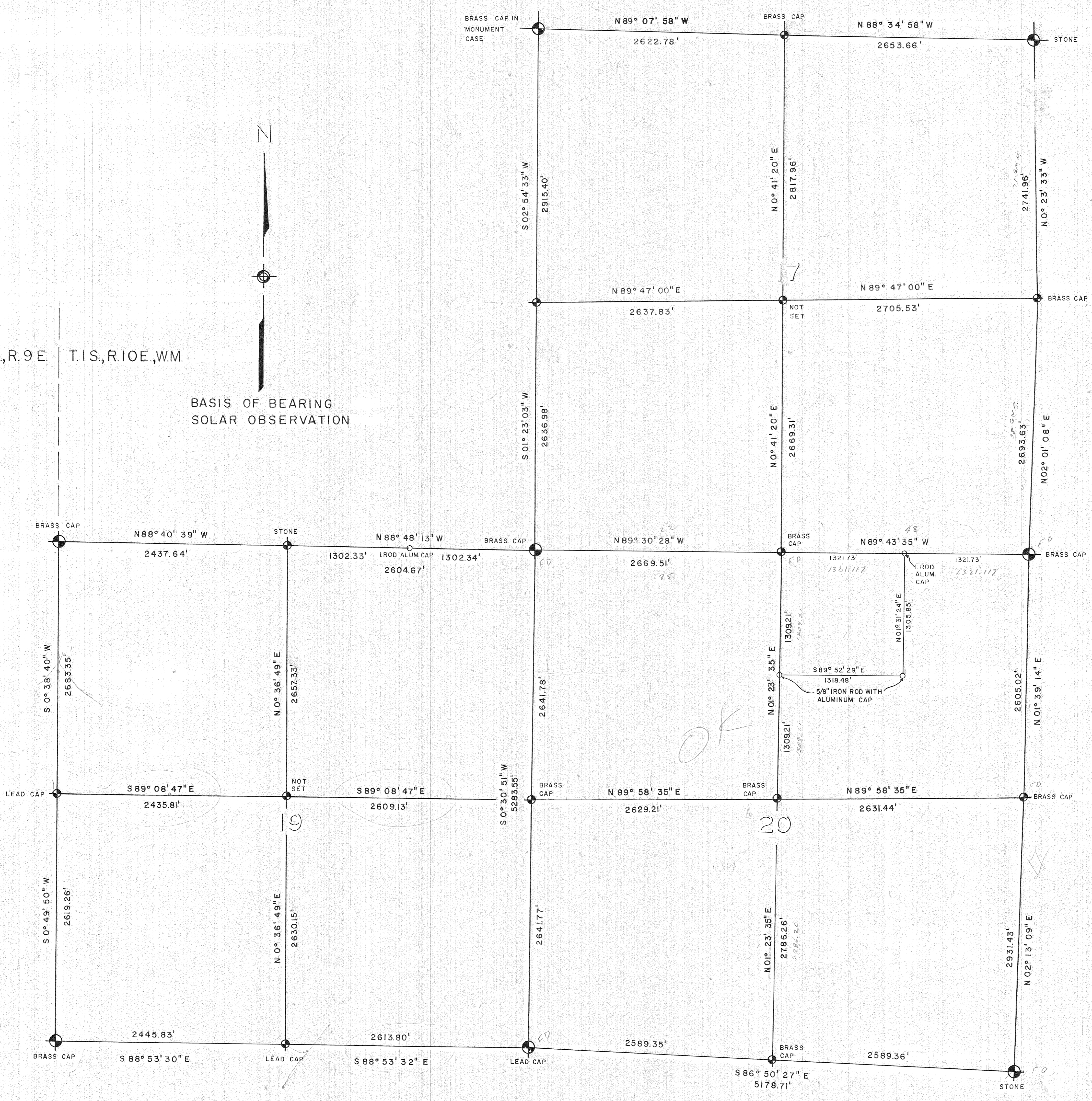
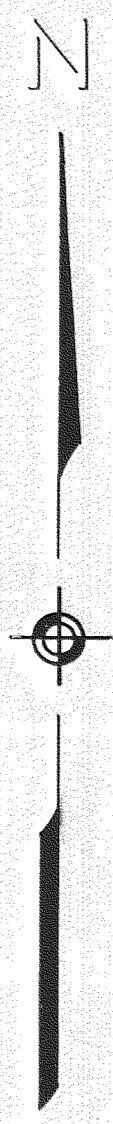


T.I.S.,R.9E. T.I.S.,R.10E.,W.M.

BASIS OF BEARING
SOLAR OBSERVATION



5.8
3.8
7.6

OK

NO

VOID
DD
3/14/75

HOOD RIVER COUNTY SURVEY OFFICE	
ANTOINE TIMBER SALE	
DATE: 27 OCT. 71	JOB NO. _____
SCALE: 1" = 500'	FILE NO. _____
DRAWING: WBROWN	SHEET: 1 OF 1

0272

DEPARTMENT OF PUBLIC WORKS
CARLOS VAN ELSBERG, DIRECTOR
P. O. BOX 457
HOOD RIVER, OREGON 97031
PHONE 386-2616



COUNTY OF HOOD RIVER
BOARD OF COMMISSIONERS

P. F. BUCKLIN, CHAIRMAN
JAN Y. KURAHARA, VICE CHAIRMAN
JERRY ROUNTON
CLARENCE N. AMOTH
BRUND HUKARI

HOOD RIVER, OREGON

July 23, 1971

RESUME OF SURVEY: Antoine Timber Sale Area.

In 1968 a Hood River County Survey crew embarked upon a re-survey of Sections 17, 19 and 20, Township 1 South, Range 10 East WM for the purpose of restoring Government Corners marking the bounds of the County Forest lands in these sections.

The field work was begun by taking the Government Land Office notes and searching for any and all original evidence of good corners for control. The following points were found during this examination:

Section Corner to 7, 8, 17 and 18 - Found 1" iron pipe 1 foot deep in pavement as per reference in Survey Office.

Section Corner to 8, 9, 16 and 17 - Found stone with "x" in top as per 1911 Plat.

East Quarter Corner to Section 17 - Found 1-1/2" iron pipe with no references.

Section Corner to 16, 17, 20 and 21- Found 1" iron pipe and no other evidence.

South Quarter Corner to Section 17 - Found 3/4" iron pipe and one tree which appears to be an original B. T. but no scribe visible.

Section Corner to 17, 18, 19 and 20 - Found 1-1/2" iron pipe with no other evidence.

West Quarter Corner to Section 17 - Found rock with "x" on top as per 1911 Plat.

East Quarter Corner to Section 20 - Found mound of stone but no "x" readily identifiable or stake evidence found.

Section Corner to 20, 21, 28 and 29 - Found 4" x 4" x ?" stone 14" high with notches and original bearing trees.

Section Corner to 19, 20, 29 and 30 - Found 1-1/2" pipe with lead cap and four bearing trees.

Resume of Survey
Antoine Sale
page 2

South Quarter Corner to Section 19 - Found 1-1/2" pipe with lead cap marked "1/4 Cor. 19/30" and two bearing trees.

Section Corner to 19 and 30 on the township line - Found 1-1/2" pipe and tree with a blaze and tag.

West Quarter Corner to Section 19 - Found 3/4" pipe and two bearing trees.

Section Corner to 18 and 19 on the township line - Found 3/4" iron pipe and a tag on a tree with no blaze or scribe.

North Quarter Corner to Section 19 - Found stone with "1/4" on the top and one original bearing tree snag still standing as per 1911 Plat.

After compiling this data, the field crew began a traverse around Section 17, Township 1 South, Range 10 EWM to locate on a map all the points found in this area. Similar traverses were run through Sections 19 and 20 and the entire project was calculated and adjusted where needed by computer at Pettijohn Engineering Company, Inc, in Portland. The completed project was then platted and compared to all the available documented material which had been collected in the office of the County Surveyor.

All of the corner points previously mentioned were determined to be accurate enough in relation to each other, and proportionally correct according to recorded plats, to be accepted as good where found. All of these accepted points were remonumented with Hood River County brass disks stamped as per location, plus proper reference trees and ties to topographic features.

Other unrecorded monuments were found and after the aforementioned considerations, it was determined that they did not conform to the required limits of accuracy so were thus discounted. These unaccepted points were found in the North one half of Section 17 Township 1 South, Range 10 EWM and were all interior points, none of which were set in the 1884 survey but were later monumented with wood stakes in 1911. None of the present information can be verified as to being of 1911 origin.

In the entire three sections surveyed only three government corners, out of the 18 sought, were unconfirmed and had to be re-established. These corners were as follows: The North Quarter Corner of Section 17; The South Quarter Corner of Section 20 and the Quarter Corner between Sections 19 and 20. In re-establishing these points the Manual of Instructions for the Survey of Public Lands of the United States was used since proportional measurement was the only means available. After the proposed corner ties were computed and set in the field, a complete search for any evidence of the original corner was once again conducted. Nothing substantial enough to change the position of the corners was disclosed.

Resume of Survey
Antoine Sale
page 3

At this point some of the true lines between corners were brushed through and checked on the ground before final monuments were placed. These lines included the line East and West through the center of Section 19; the line from the Quarter Corner between Sections 18 and 19 to the East One Sixteenth of Sections 18 and 19; the line from the Center North One Sixteenth of Section 20 to the Northeast interior One Sixteenth of Section 20; and the line from the South One Sixteenth of Sections 17 and 18 to the Center South One Sixteenth of Section 17.

The re-established corners, the re-monumented corners, and corners left as found, along with the center quarters and one sixteenth corners on Hood River County parcels which were monumented are indicated on the plat of this survey and all accessories, such as witness trees, tags and references are recorded, filed and indexed in the Office of the Hood River County Surveyor along with the field notes and computation sheets.

Ed Graham

Ed Graham
Chief of Party