

62

ROAD PLAT

JOSIE D. HANNUM ET AL

In section 6, Twp. 2 S. - R. 10 E. - N. 11

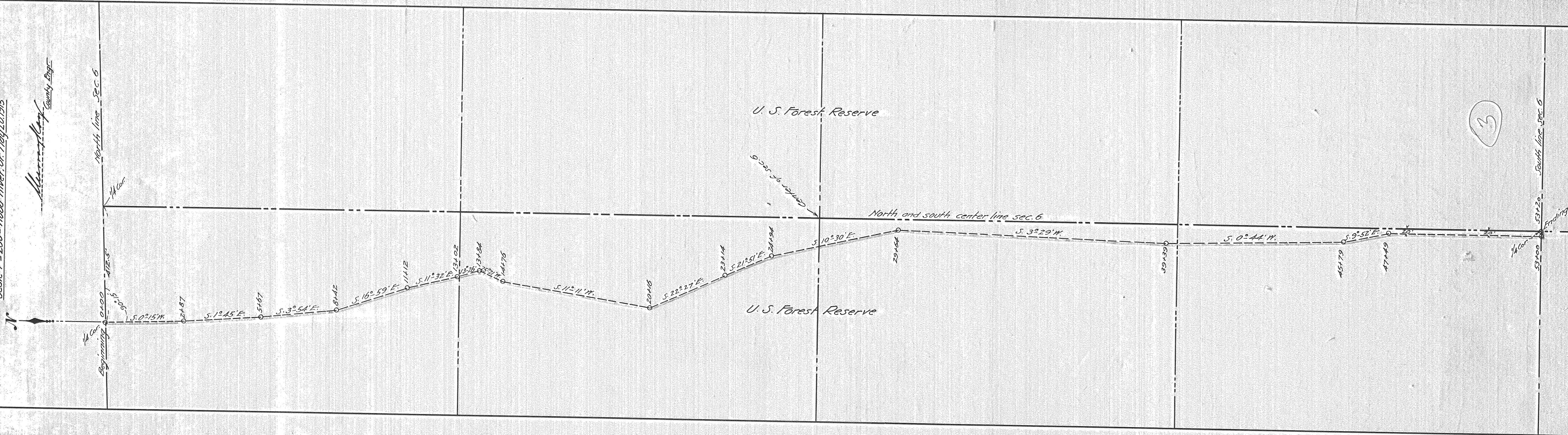
Stadia measurements. Cal. bearings.

Length 1 mile - Width 40 ft.

Maximum grade 7 per cent

Scale 1" = 200' - Hood River, Or. May 20, 1915

*Wm. H. Hays* County Engr.



3

Wm. H. Hays