

PLAT OF WALTON ROAD

IN SECTIONS 19, 30 & 31 T.1 N., R.10 E., N.M.
 Scale: 1 inch = 500 ft. MAY 1926

C. M. Thibault,
 Co. Engr.

Initial Point 0+00 N.W. COR. SW 1/4 NE 1/4 SEC. 19, T.1 N., R.10 E.

H.W. Stone

Center of Road 10 ft. east of 1/4 Line

Harriett Nicholson

O.L. Co.

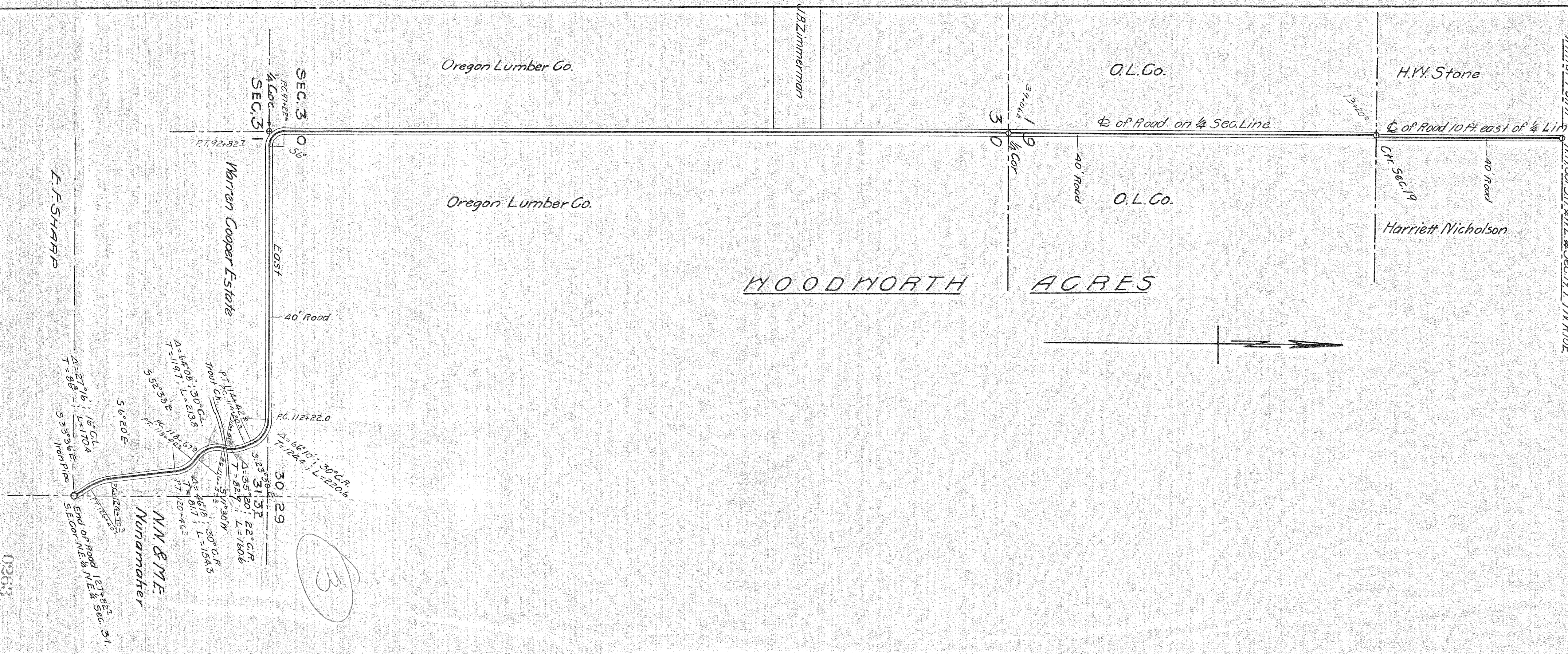
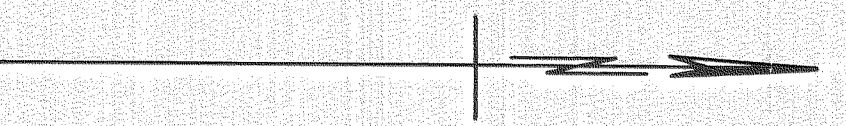
O.L. Co.

J.B. Zimmerman

Oregon Lumber Co.

Oregon Lumber Co.

WOOD NORTH ACRES



(3)

post notation

0263