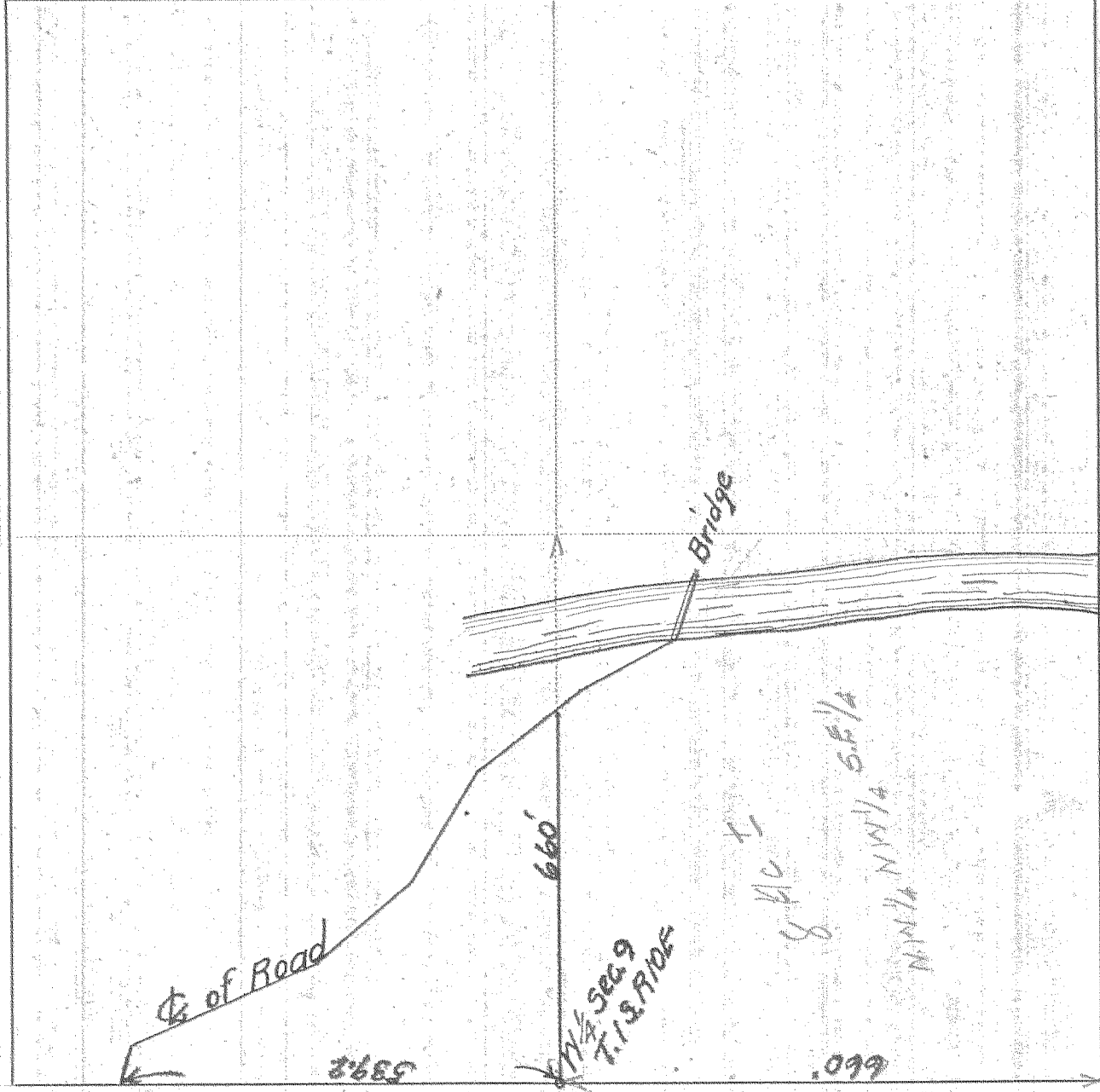


SURVEY IN SECT 9 TWP 1 S RANGE 10 EAST W. M.

FOR Hood River Co

DATE _____



Scale 1 inch = 200'

I do hereby certify that this sketch was made from notes taken during an actual survey by me on May 6, 1938, and that it correctly represents the field work of said survey.

Ed Hobson
Deputy County Surveyor
Hood River County, Oregon

Helpers Harold Booth

0223
1-278