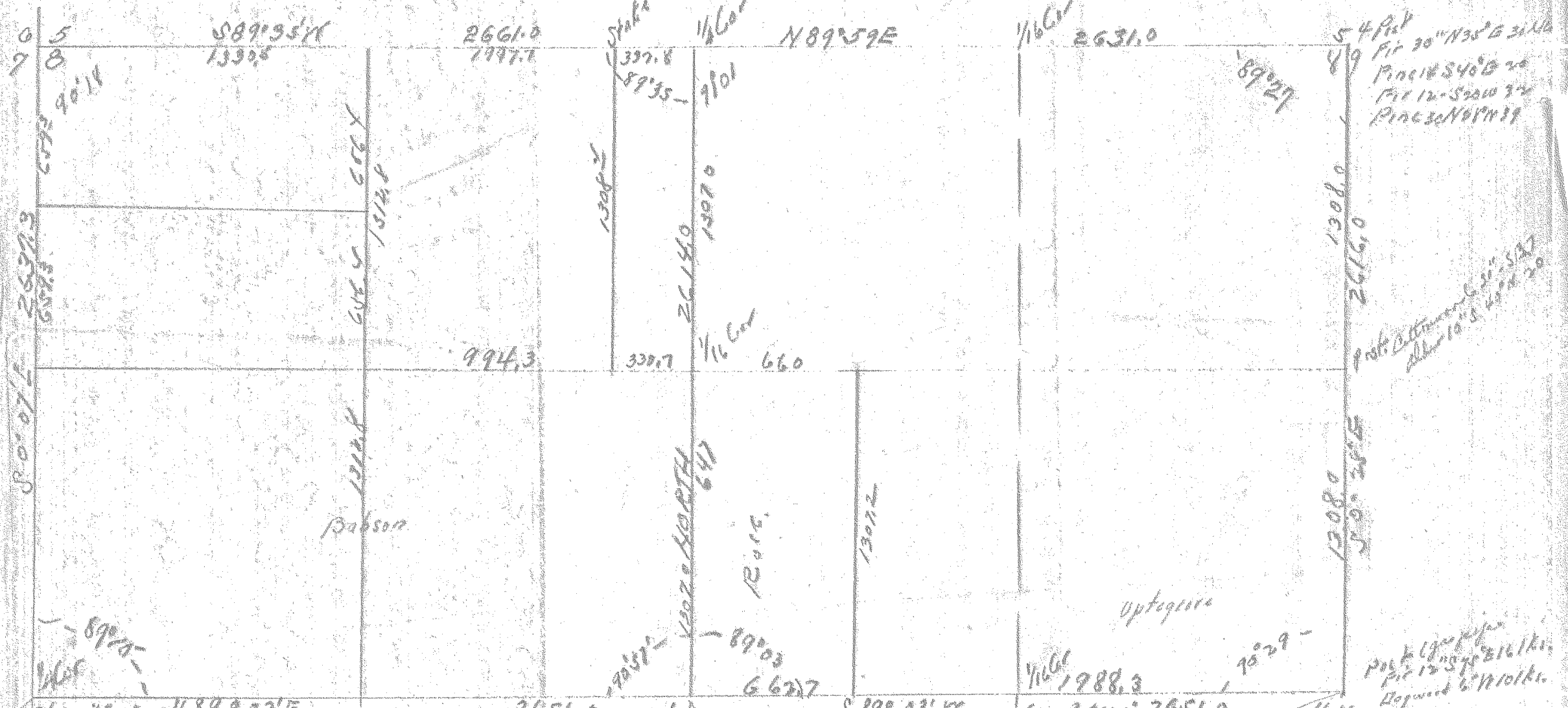


Section 10E

500' = 1"

89° 59'  
89° 35'  
24

Fir 16" 1130' 674  
Fir 28" 516'  
Fir 44" 268'  
Fir 70'



Stone 276" N 89° 03' E  
Pile 546" 431' 1/2

Hodson

Stone 10x10"  
1 Fir 20" N 10° 10' W 99.75 ft  
1 Fir post N 63° 5' W 20.8"  
1 Fir 24" S 23° 32' E 25.5"  
1 Fir 24" S 43° E 40.5"

#1-273  
0218

