

108

# ROAD PLAT

## E. CULBERTSON ET AL.

In section 8, Twp. 1 S. - R. 10 E. - W. 11

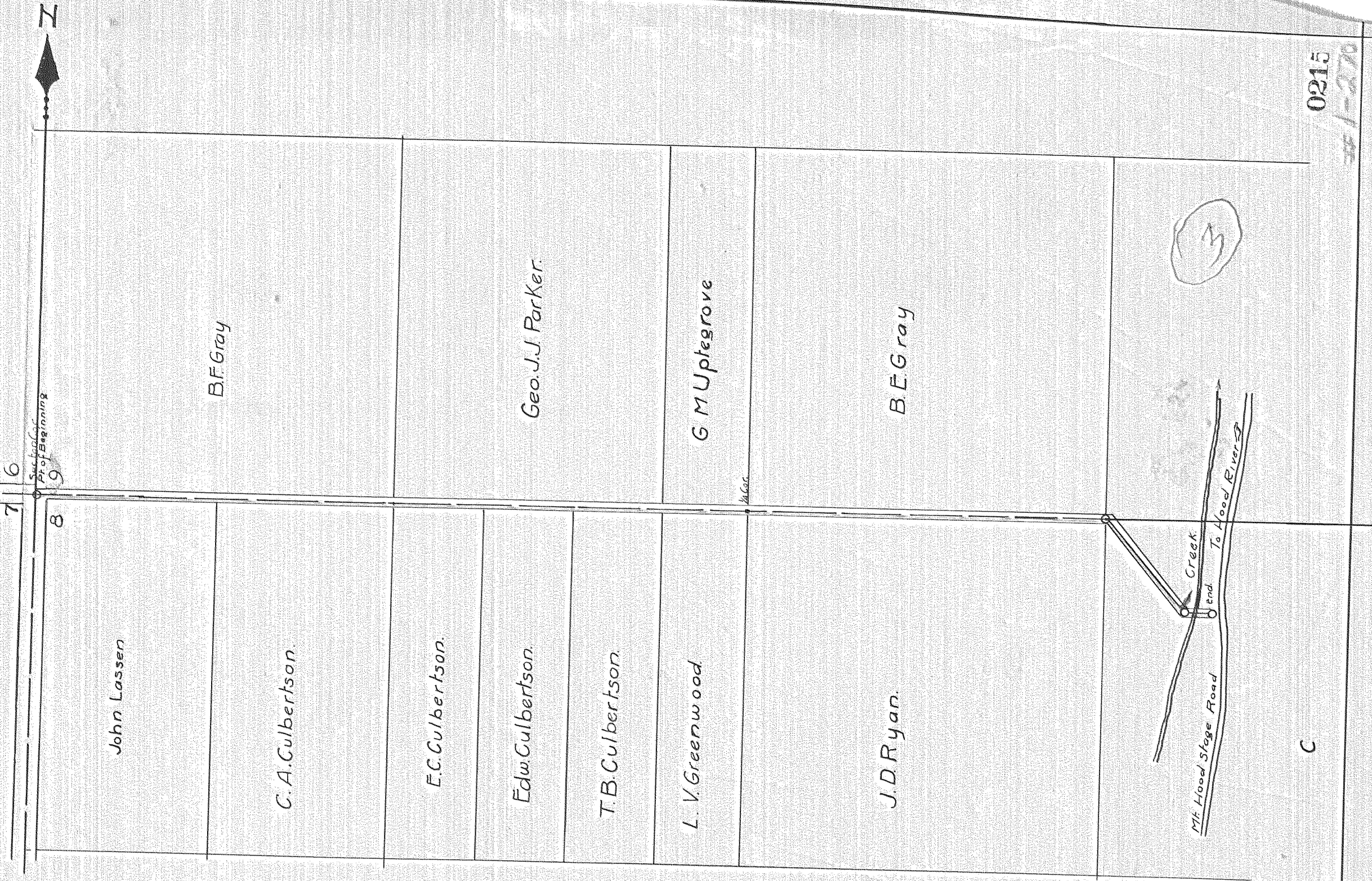
Stadia measurements. Cal. bearings

Length 4515 ft. - Width 30 ft.

Maximum grade 5 per cent

Scale 1" = 400' - Hood River, Or. Mar 10, 1915

A. R. Culbertson  
Co. Sur.



C

0215

# 1-270

0008 not used