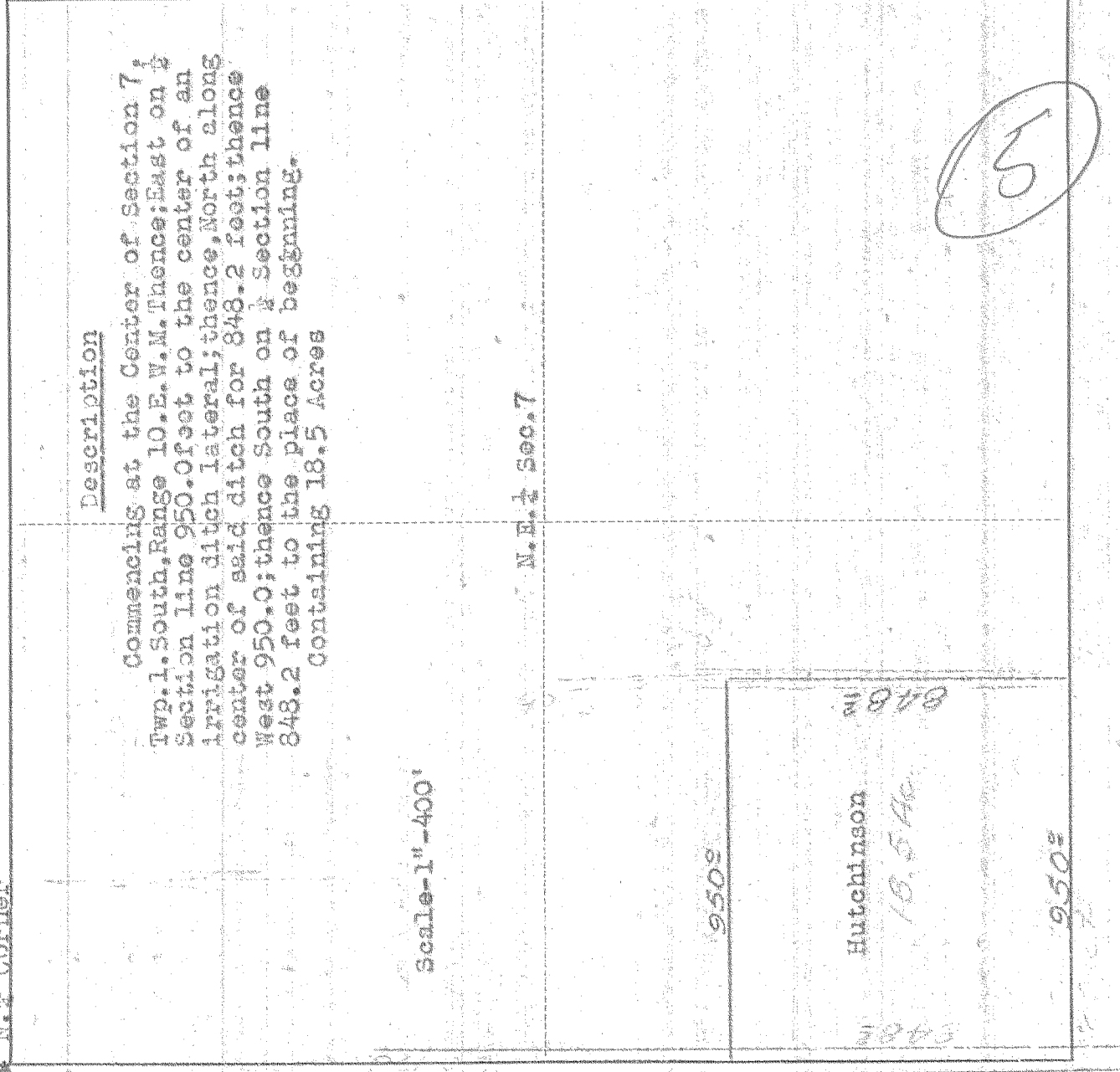


SURVEY IN N.E. 1/4, SECT. 7, TWP. 1. South, RANGE 10, EAST W. M.

FOR Mrs Johannean Minor DATE Feb. 14, 1930

* N. 1/2 Corner



Description

Commencing at the Center of Section 7, Twp. 1. South, Range 10, E. W. M. Thence; East on 1/4 Section line 950.0 feet to the center of an irrigation ditch lateral; thence, North along center of said ditch for 848.2 feet; thence West 950.0; thence South on 1/4 Section line 848.2 feet to the place of beginning. Containing 18.5 Acres

Scale-1"-400'

N.E. 1/4 Sec. 7

Hutchinson

18.5 Ac.

848.2

848.2

950.0

950.0

5

I do hereby certify that this sketch was made from notes taken during an actual survey made by me on Feb. 14, 1930, and that it correctly represents field work of said survey.

C. M. Hurlburt.
County Surveyor
Hood River County, Oregon

Helpers Geo. Minor

0204 # 1-254