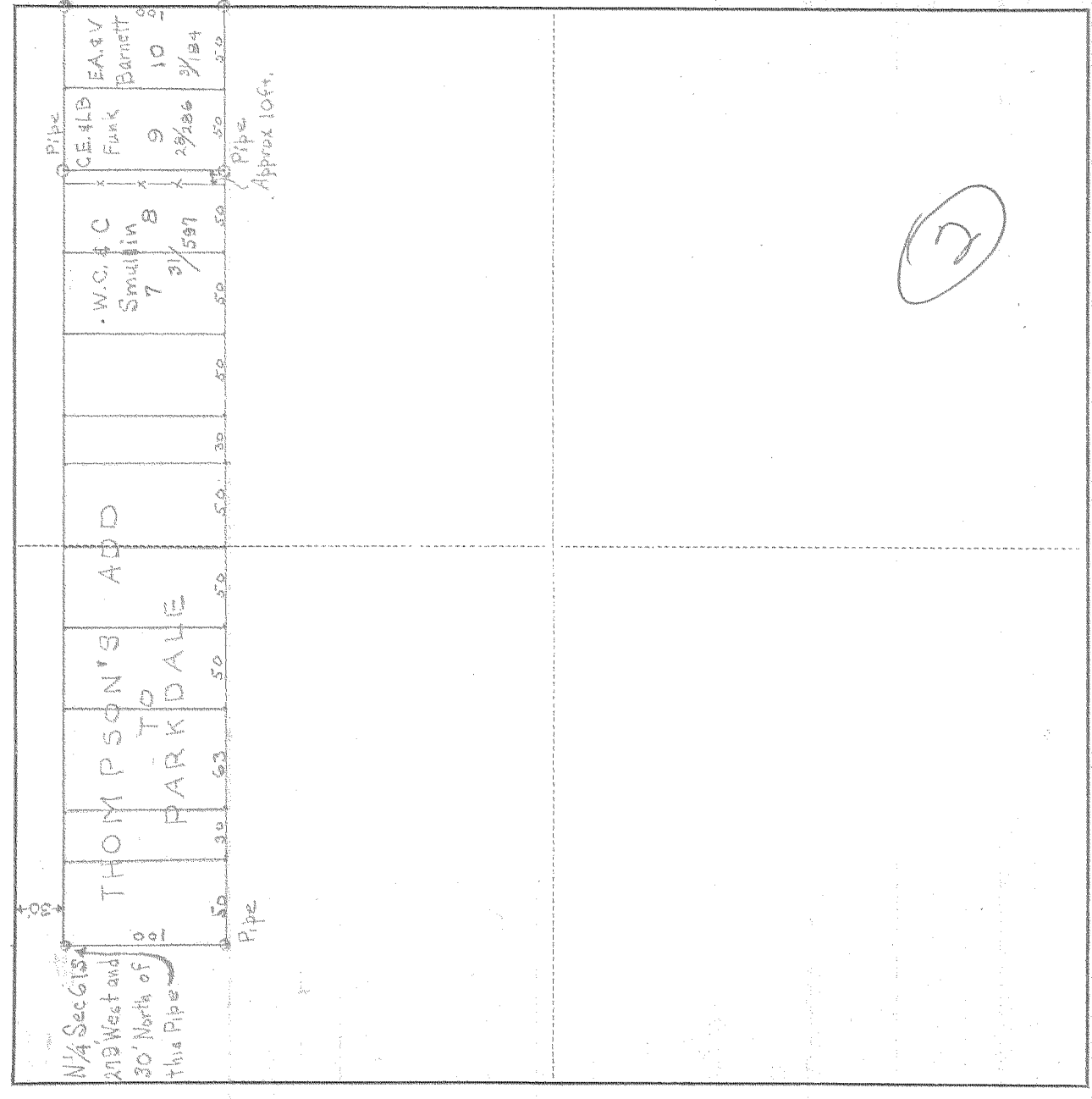


SURVEY IN NE 1/4, SECT. 6, TWP. 1 S, RANGE 10, EAST W. M.

FOR \_\_\_\_\_ DATE \_\_\_\_\_



Scale 1 inch = 100 ft.

I do hereby certify that this sketch was made from notes taken during an actual survey by me on \_\_\_\_\_ 19\_\_\_\_\_, and that it correctly represents the field work of said survey.

County Surveyor  
Hood River County, Oregon

Helpers \_\_\_\_\_

KILIAN 12007  
0194  
# 1-243