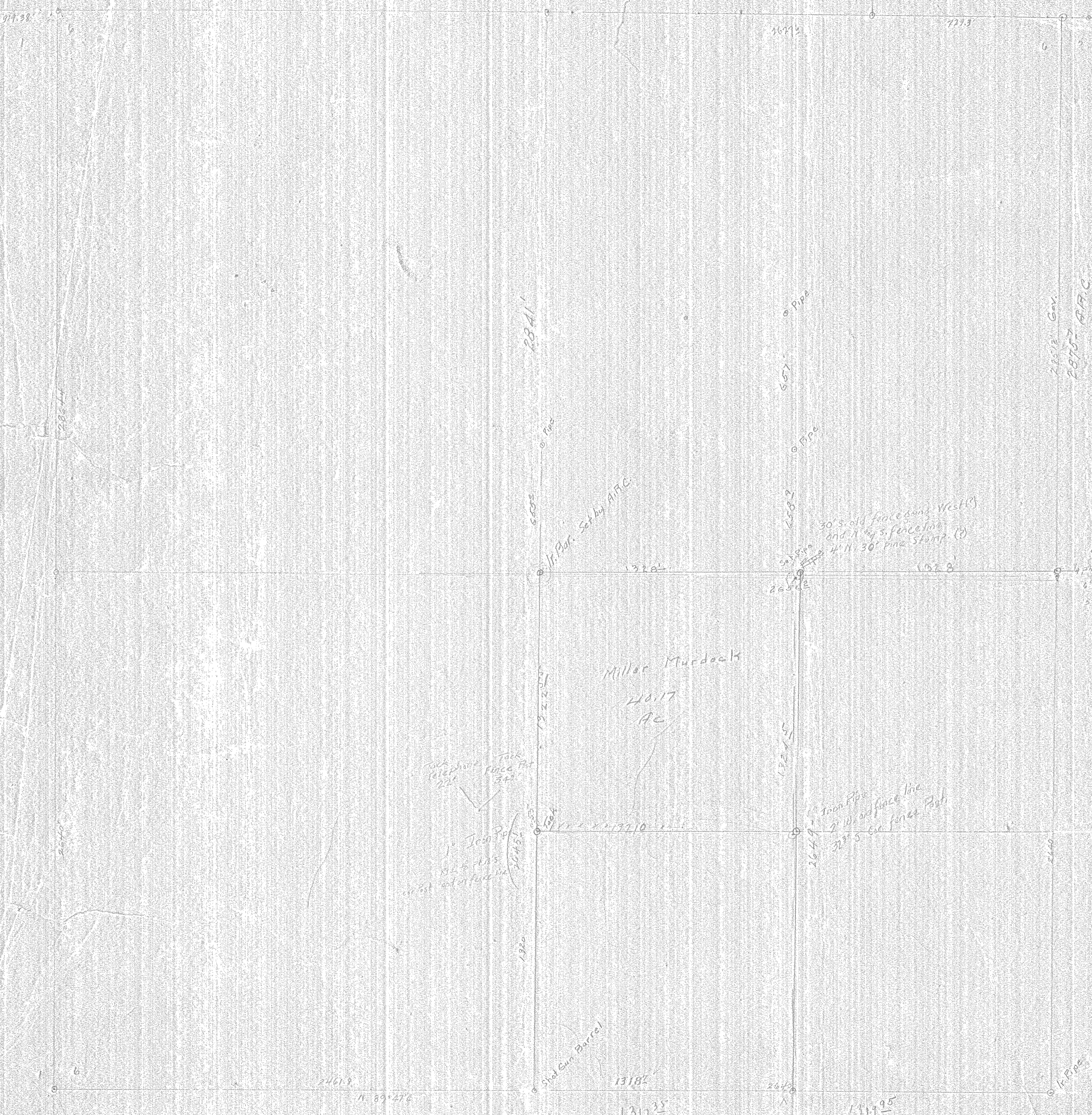
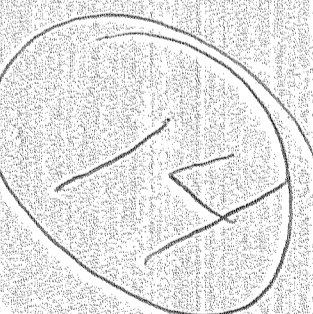


Sec 6 - 1-10E



Scale 1" = 400'



100g 4" sq 24" in ground
26' from N 32° E 38' kts
30' " S 18° E 40' kts
18' " S 34° W 13' kts
24' " N 48° W 57' kts

#1-237

0191

Post 4" sq - 2" in ground
251
285
Miller N 40° E 101 kts
12' " S 60° W 251 kts
40' " S 88° W 281 kts
18' " N 52° W 31 kts

Post 4" sq
251
285
Tele. Poles
226
234
342

1" Disc
251
285
2045
2045

Iron Pipe
21" dia
32' S
28' 5" S
32' 5" S
fence Post

Gov. Band
Post 4" sq
251
285
2" Pipe S 55° E 251 kts
2" Pipe S 10° W 201 kts

30' S old fence line West 1/3
and 1/4 S fence line
4" N 30° Pine stump (?)

Miller Murdock
40.17
AC

2841'

6005

1/2" Pipe S 74° W ARC

1328'

1770'

1318'

1317'

Pipe

607'

Pipe

608'

2654'

1328'

2649'

7273

1028'

26512' Gov.
28970' ARC

2440'

1" Pipe

24618'

N 89° 47'

1319'

22721
28567