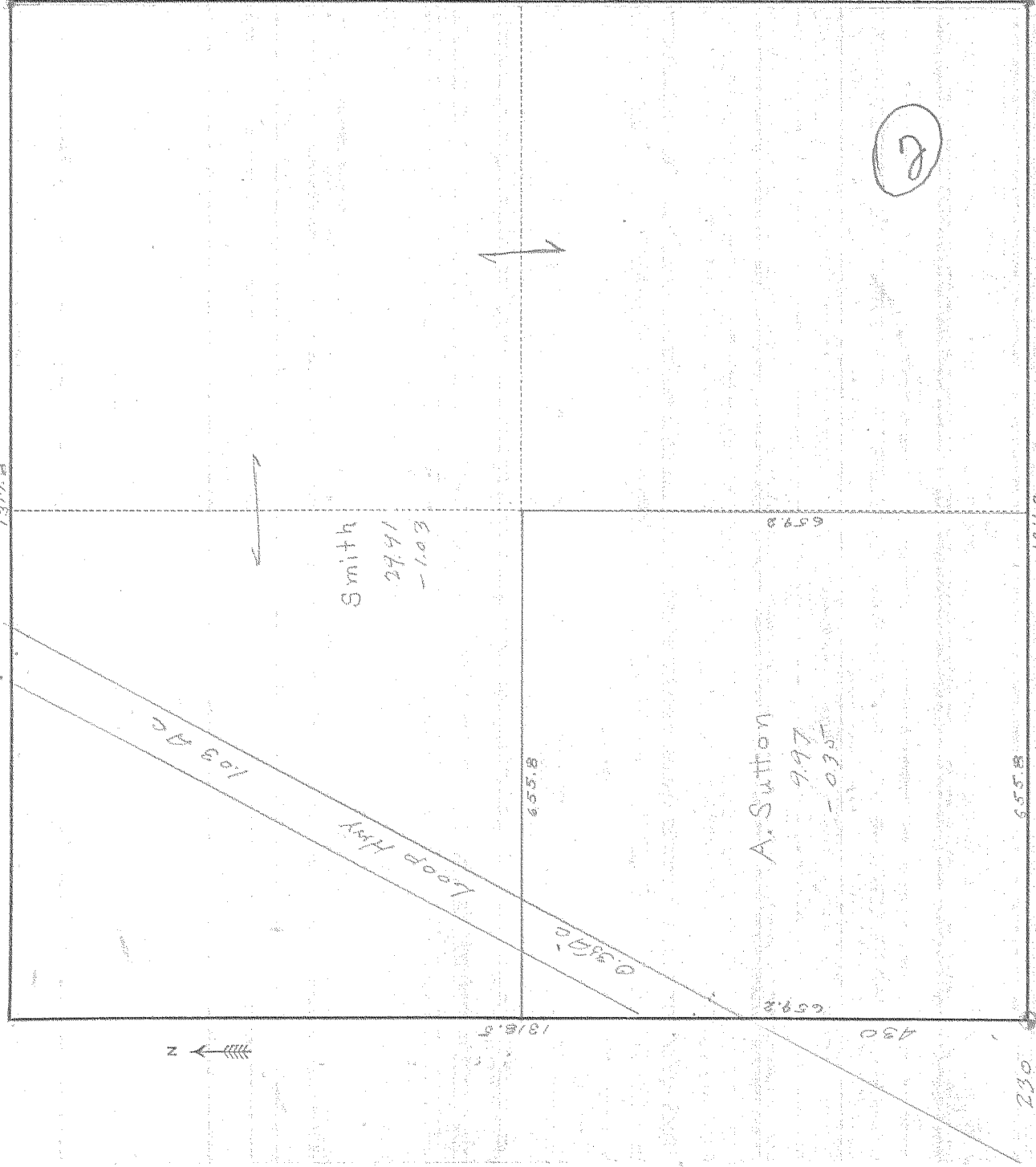


SURVEY IN SW 1/4 NW 1/4, SECT. 20, TWP. 1 S, RANGE 10, EAST W. M.

FOR Sutton & Smith

DATE May 18, 1946



Scale 1 inch = 200 ft.  
W 1/4 Corner  
Sec 20, T1S, R10 E.W.M.

I do hereby certify that this sketch was made from notes taken during an actual survey by me on \_\_\_\_\_, 19\_\_\_\_, and that it correctly represents the field work of said survey.

County Surveyor  
Hood River County, Oregon

Helpers \_\_\_\_\_

0170

KILHAM RECORD

# 1-204