

OFFICIAL PLAT

SECTIONS 17, 18, 19 AND 20

TOWNSHIP 1 SOUTH - RANGE 10 E. W. M.

UPPER HOOD RIVER VALLEY

COUNTY OF HOOD RIVER, STATE OF OREGON

From Surveys and calculations of Apr. May, June and July 1911.
Conducted in strict accordance with the instructions of the

UNITED STATES GENERAL LAND OFFICE

Winding roads and streams located approximately.
Scale 1" = 600' - July 25, 1911.

Approved and accepted July 1911

Signature not required - County Judge.

County Commissioner.

County Commissioner.

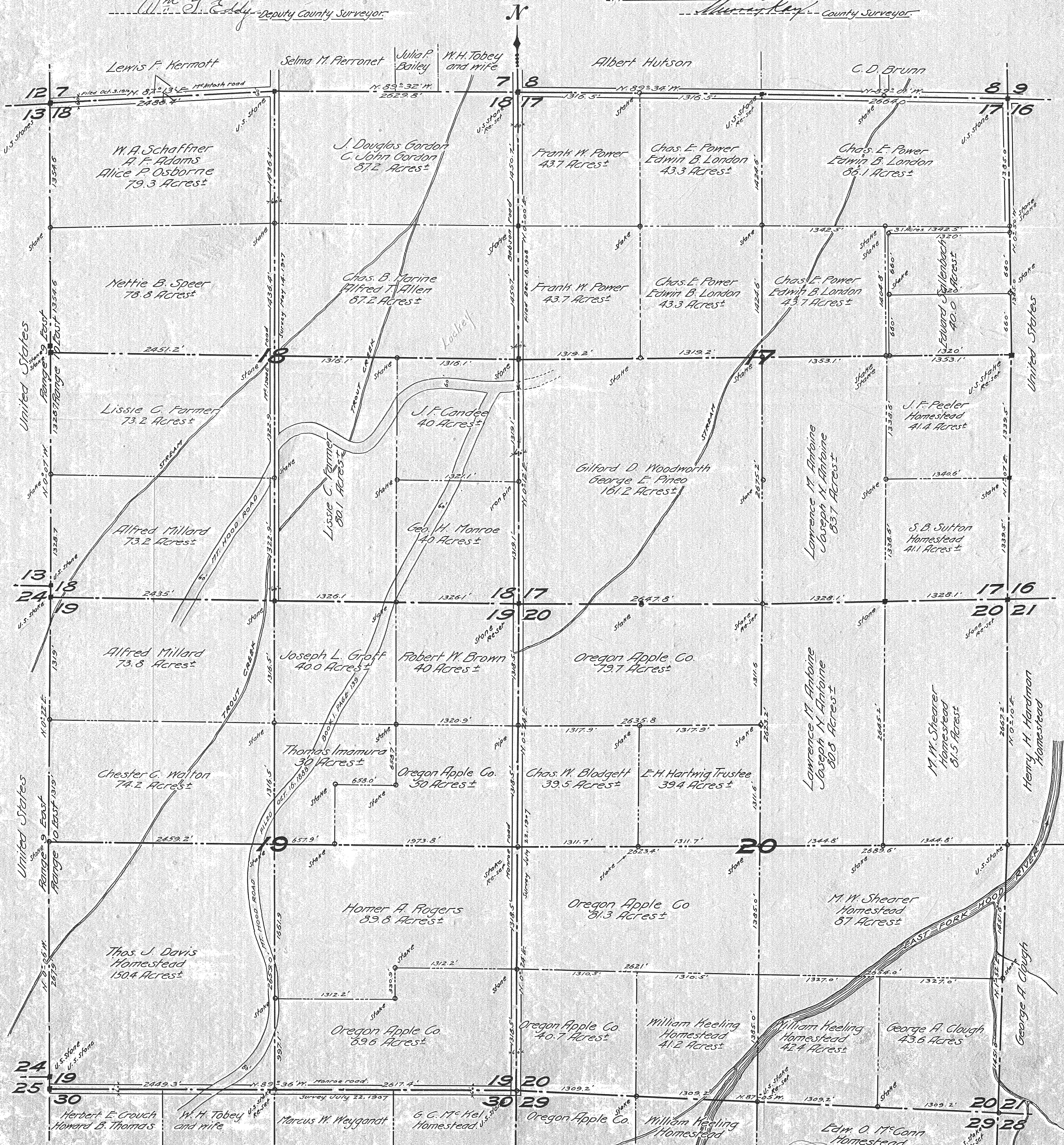
Albert P. Sarsbrant - Deputy County Surveyor.

Recorded July 27, 1911. Book 2 of Records, page 11.

Approved and accepted July 31, 1911.

W. J. Eddy - Deputy County Surveyor.

W. J. Eddy - County Surveyor.



6910 #

4

0169
#1-205