

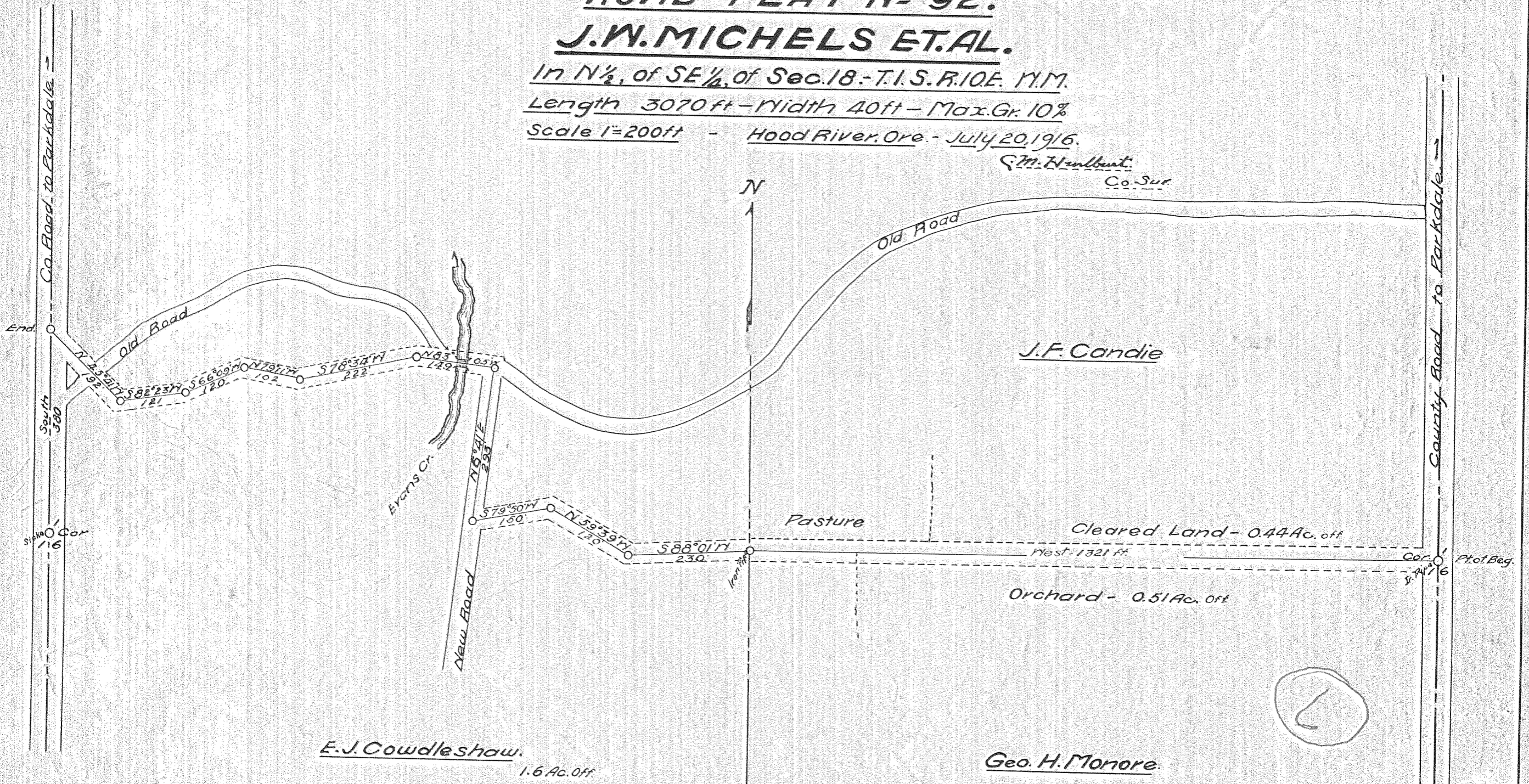
# ROAD PLAT No 92. J.W. MICHELS ET AL.

In N $\frac{1}{2}$ , of SE $\frac{1}{4}$ , of Sec. 18 - T. 1 S. R. 10 E. N.M.

Length 3070 ft - Width 40 ft - Max. Gr. 10%

Scale 1"=200ft - Hood River, Ore. - July 20, 1916.

S.M. Humbert  
Co. Sur.



E.J. Cowlleshaw.  
1.6 Ac. Off

Geo. H. Monore.

0166

#1-201

J.W. MICHELS ET AL.