

97

LONDON^{PLC} POWER ROAD

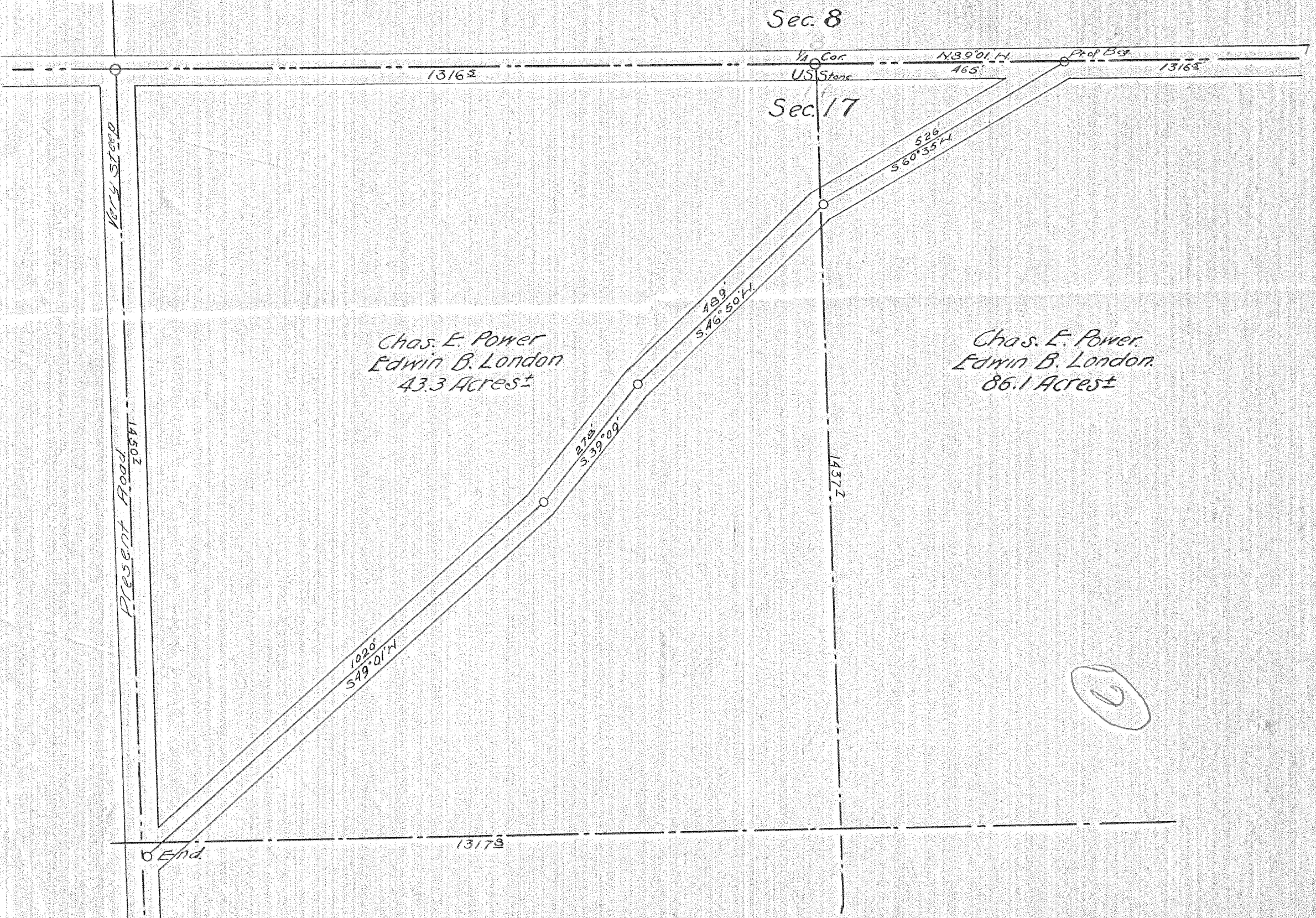
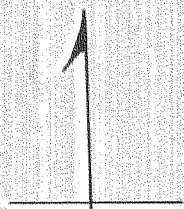
IN

SECTION 17, T. 15. R. 10 E. W. M.

Length 2313 Feet. Maximum Grade 8%.

Scale 1 inch = 200 Feet. June 30th, 1917.

N



Chas. E. Power
Edwin B. London
43.3 Acres ±

Chas. E. Power
Edwin B. London
86.1 Acres ±

Eugene Euwer.

0162

#1-196