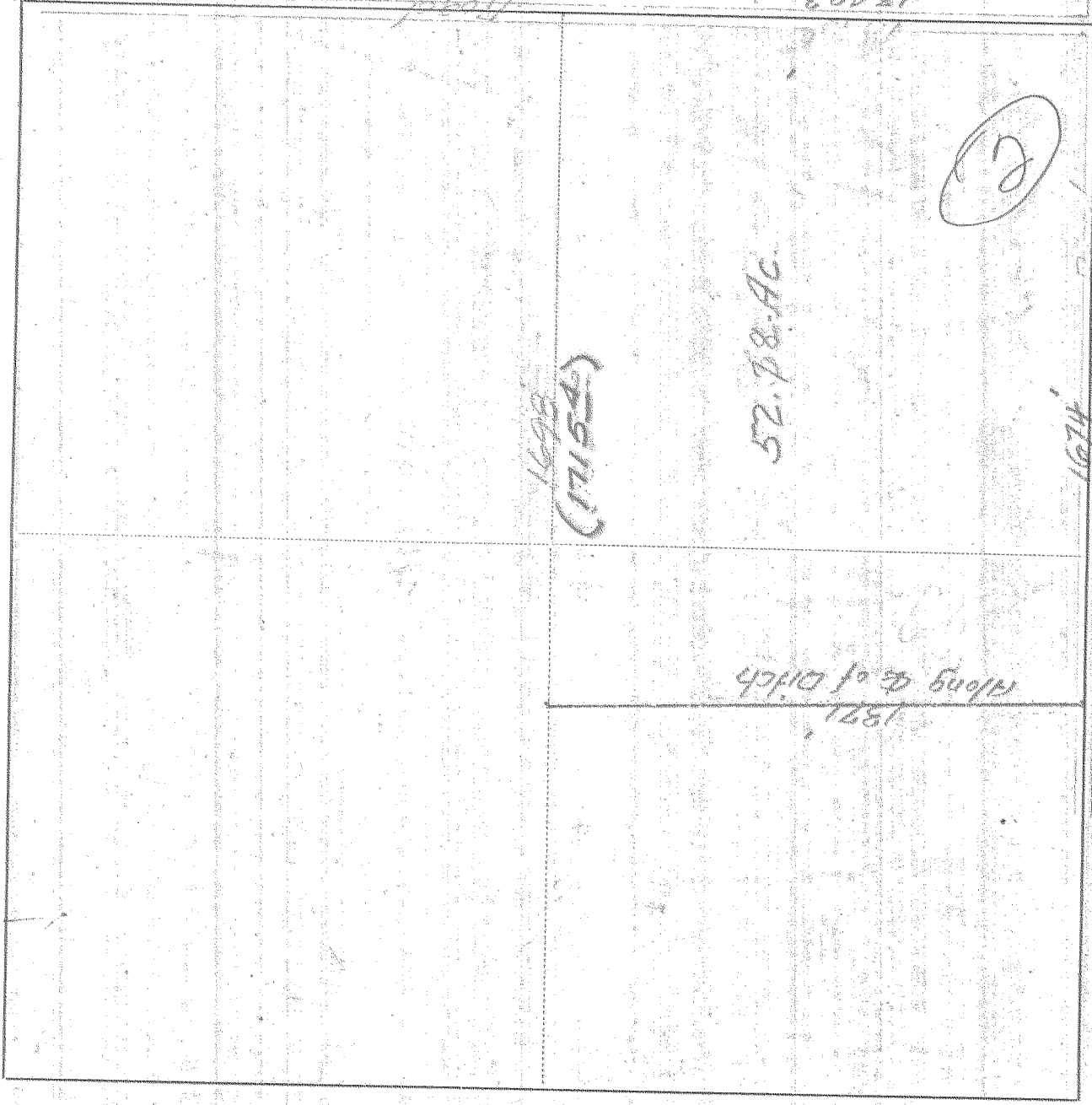


SURVEY IN SE 1/4, SECT. 31, TWP. 1 N, RANGE 10, EAST W. M.

FOR Loomis & McIsaacs

DATE April 15, 1937



Scale 1 inch = 400 ft

I do hereby certify that this sketch was made from notes taken during an actual survey by me on April 15, 1937, and that it correctly represents the field work of said survey.

Edw. Johnson
Deputy
County Surveyor

Hood River County, Oregon

Helpers K.D. Hill & Walter Myhr

0139

1-16