

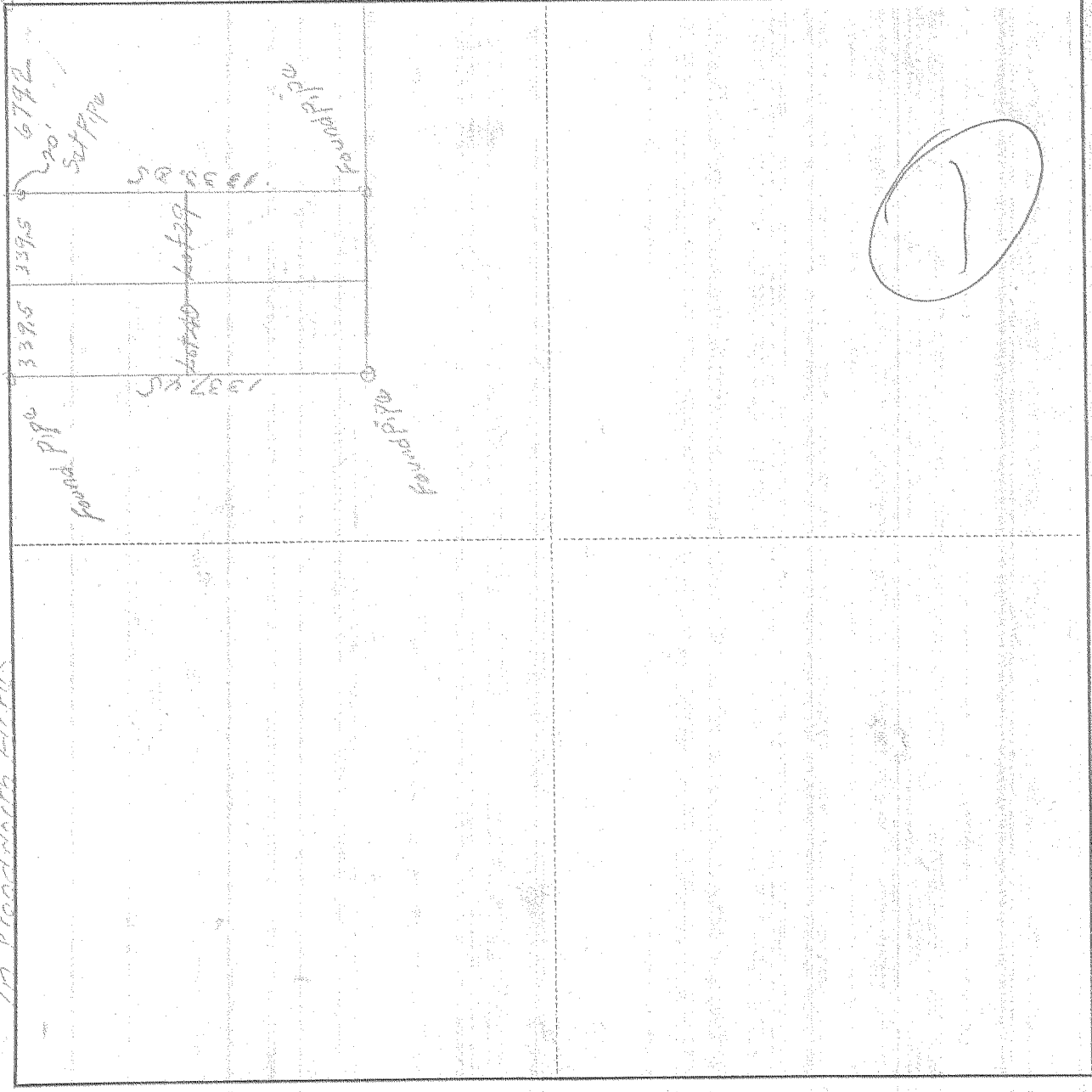
SURVEY IN N4, SECT 30, TWP. 1N RANGE 10 EAST W. M.

FOR H.A. Coopers

DATE July 23 1949

10 Woodworth Acres

Iron Pipe  
NE Cor. Sec 30  
T1N R10E



Scale 1 inch =

I do hereby certify that this sketch was made from notes taken during an actual survey by me on July 2 1949, and that it correctly represents the field work of said survey.

Edwin H. Johnson  
County Surveyor  
Hood River County, Oregon

Helpers John Chaffey

0137

ALPHA 12007

# 1-161