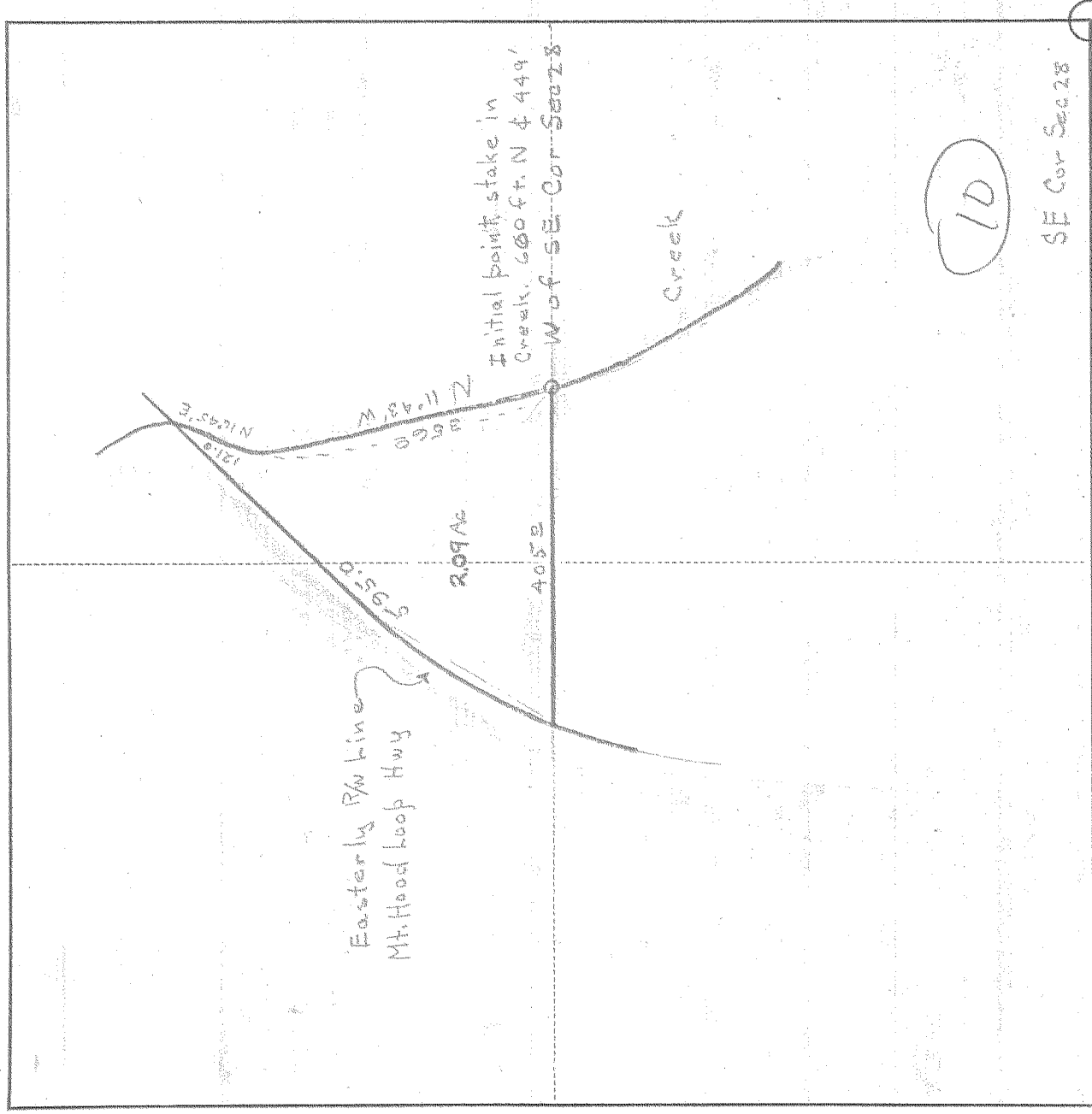


SURVEY IN SE 1/4, SECT 28, TWP. 1 N, RANGE 10, EAST W. M.

FOR Gus Maurer

DATE Sept 4, 1946



Scale 1 inch = 200

I do hereby certify that this sketch was made from notes taken during an actual survey by me on 9-4 1946, and that it correctly represents the field work of said survey.

D. A. Sutton
Deputy County Surveyor
Hood River County, Oregon

0131

Helpers Bill Murphy

MILWAU 102607

#1-153