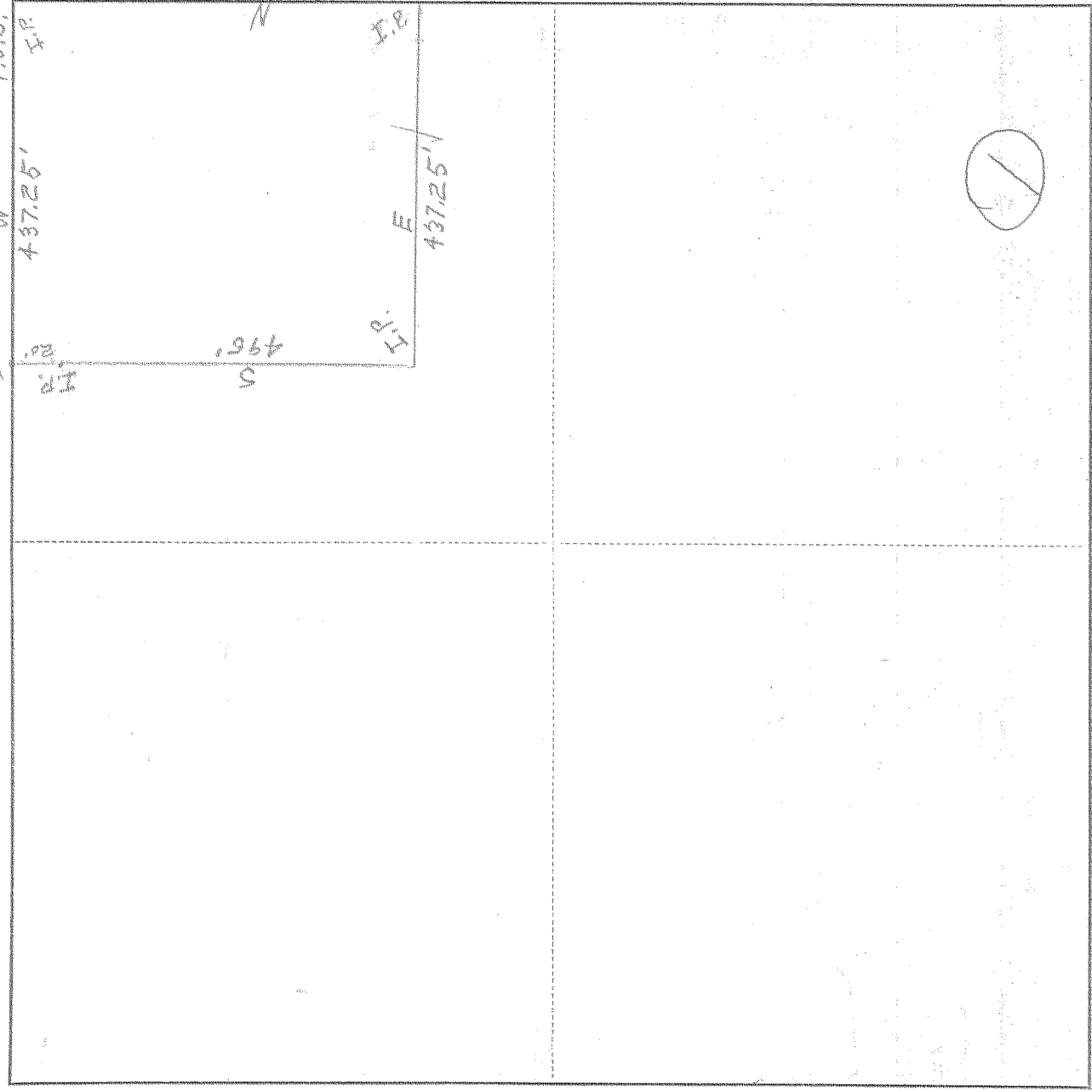


SURVEY IN NE 1/4 NW 1/4, SECT. 27, TWP. 1 N. RANGE 10 EAST W. M.

FOR Mark Akin

DATE 6/27/49

P.O.B. N 1/4 COR.
SEC. 27



Scale 1 inch = 200'

I do hereby certify that this sketch was made from notes taken during an actual survey by me on 6/27 1949, and that it correctly represents the field work of said survey.

L. P. Peterson for E. Hobson
County Surveyor
Hood River County, Oregon

Helpers George R. Mable John Dwyer

0123

KILHAM 192087

#1-145