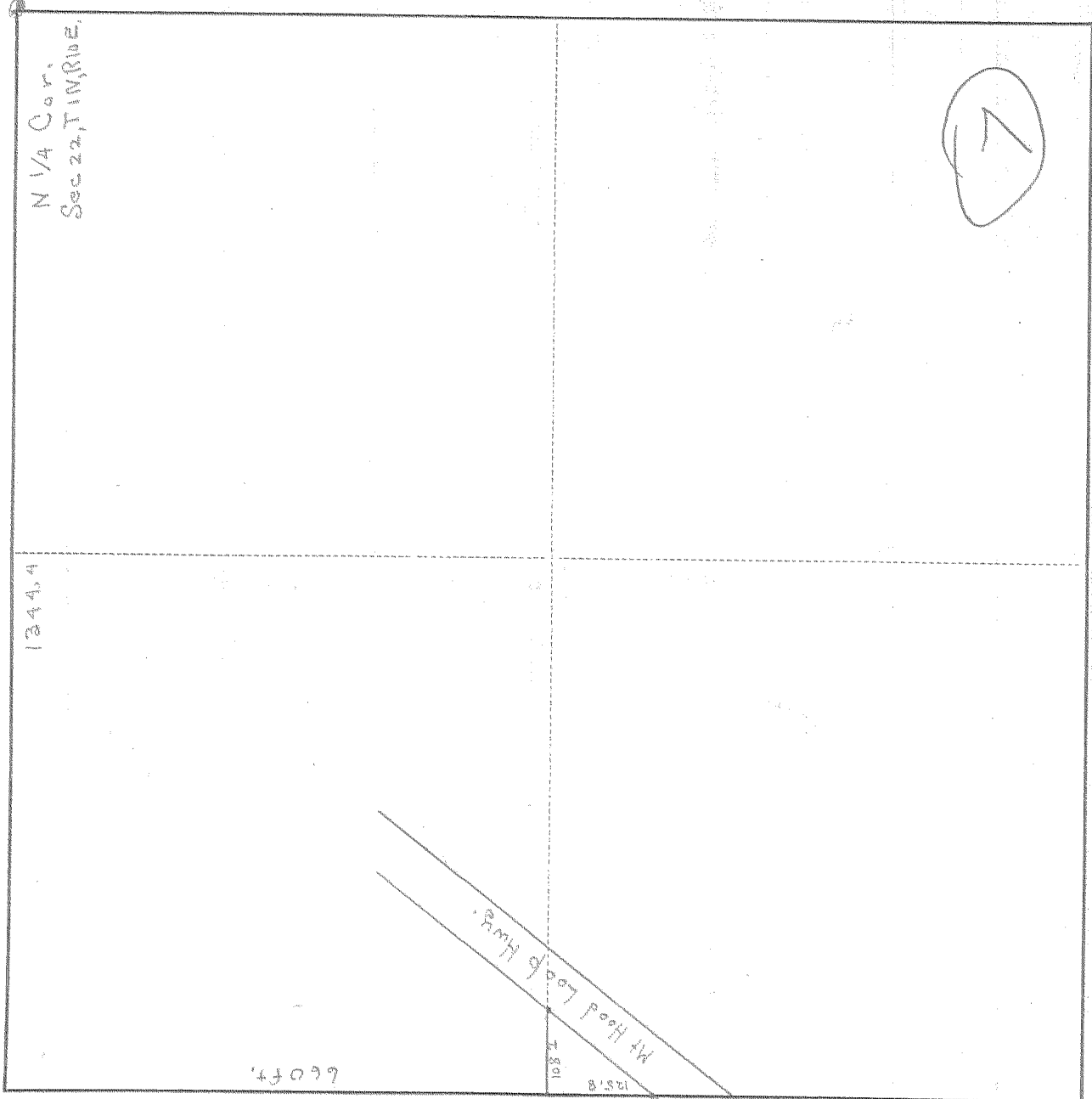


SURVEY IN NE 1/4 of NW 1/4, SECT. 22, TWP. 14N, RANGE 10E, EAST W. M.

FOR Assembly of God Church

DATE



Scale 1 inch = 200 ft.

I do hereby certify that this sketch was made from notes taken during an actual survey by me on _____ 19_____, and that it correctly represents the field work of said survey.

County Surveyor
Hood River County, Oregon

0109

Helpers