

SURVEY IN

SECT. 11

TWP. 11N

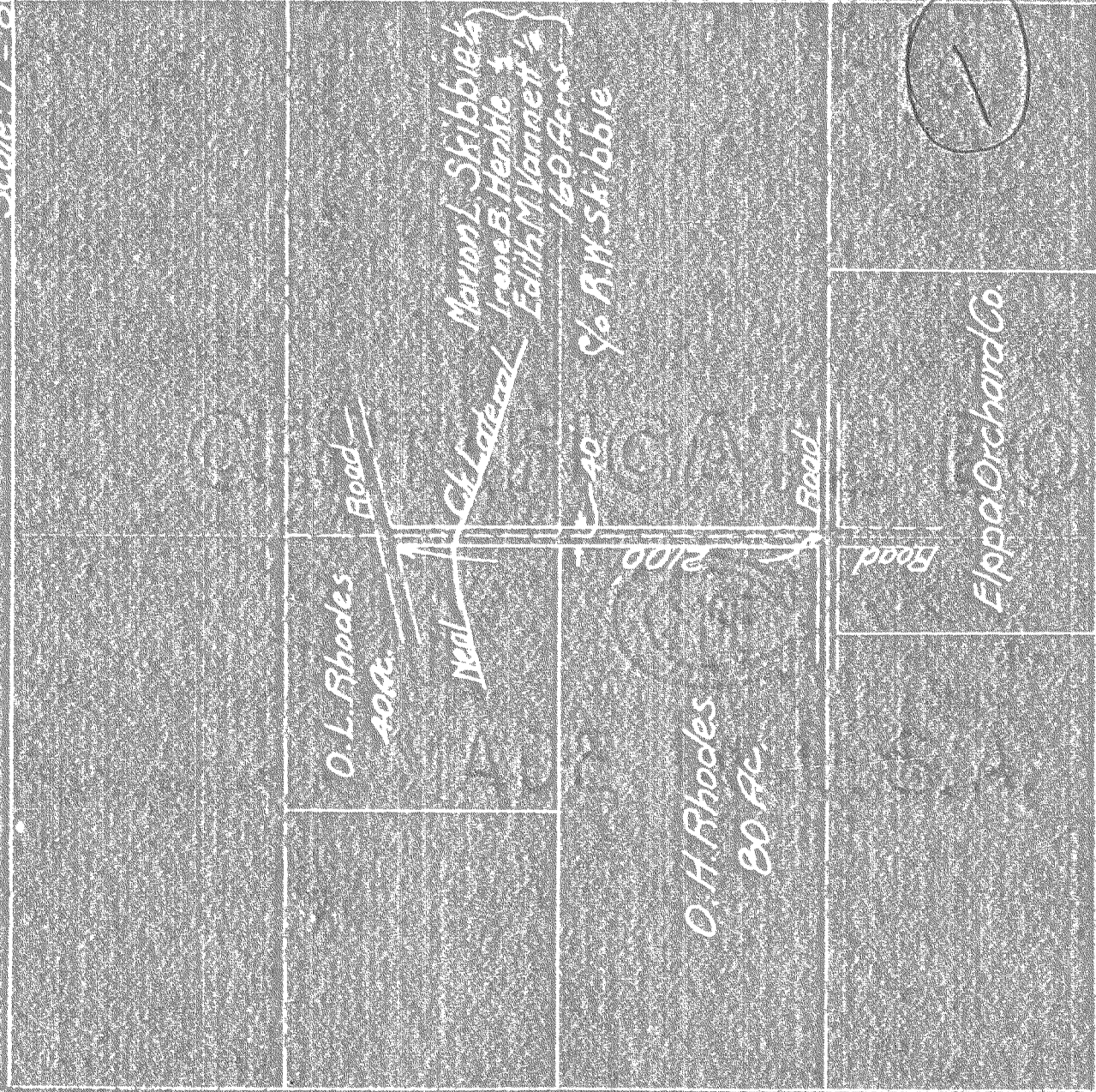
RANGE 10

EAST W. M.

FOR County Road

DATE April 7, 1930

Scale: 1" = 800'



I do hereby certify that this sketch was made from notes taken during an actual survey made by me on April 12, 1930, and that it correctly represents field work of said survey.

C. M. Mulbert
County Surveyor
Hood River County, Oregon

Witness W. H. Nichols

0080

1-090