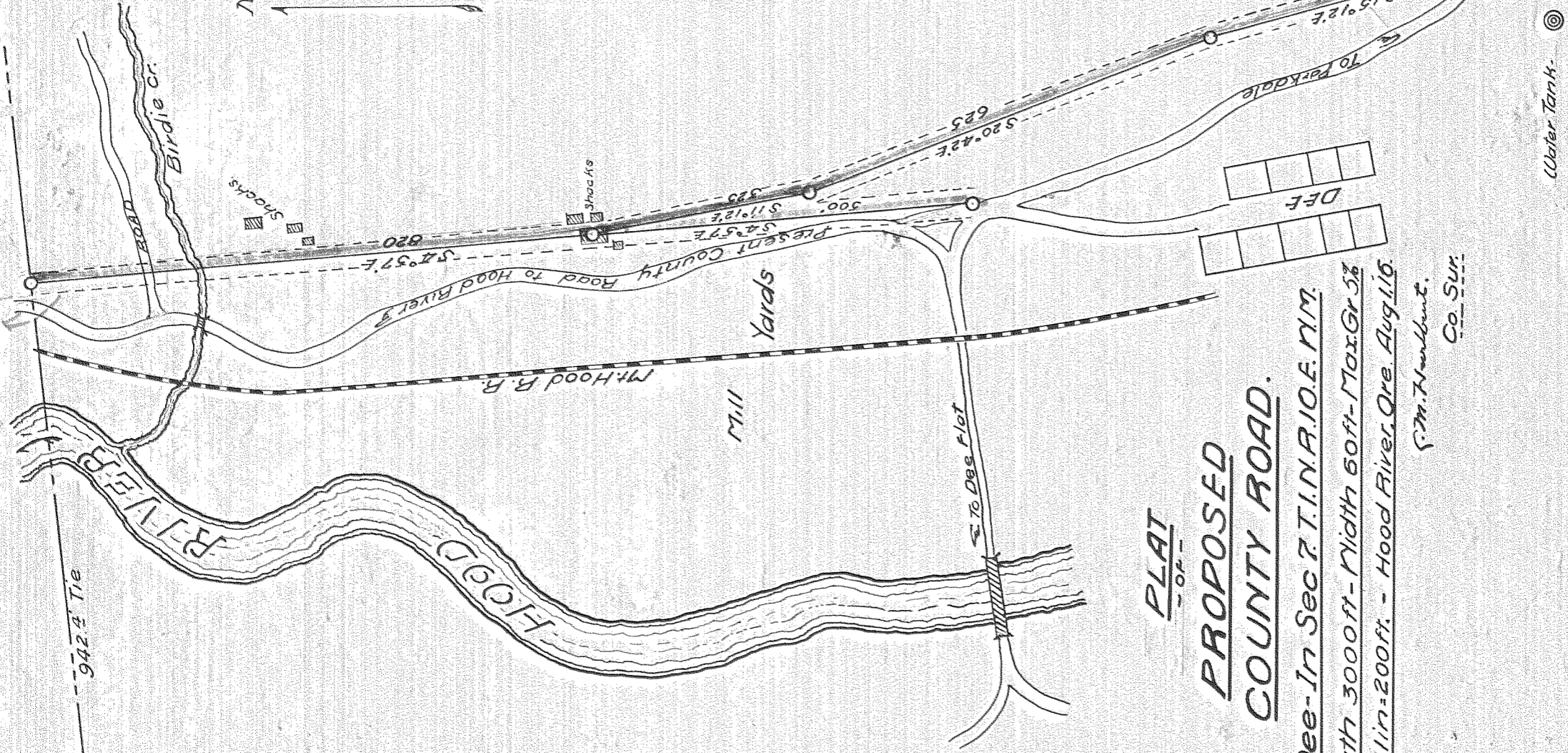


16
127

942.4 Tie



PLAT
OF
PROPOSED
COUNTY ROAD.

At Dee-In Sec 7 T. 1. N. A. 10. E. N. M.

Length 3000 ft - Width 60 ft - Max. Gr 5%

Scale 1 in = 200 ft. - Hood River, Ore. Aug. 1. 16.

S. M. Humbert.
Co. Sur.

0077

#1-081

AP09/01/0506