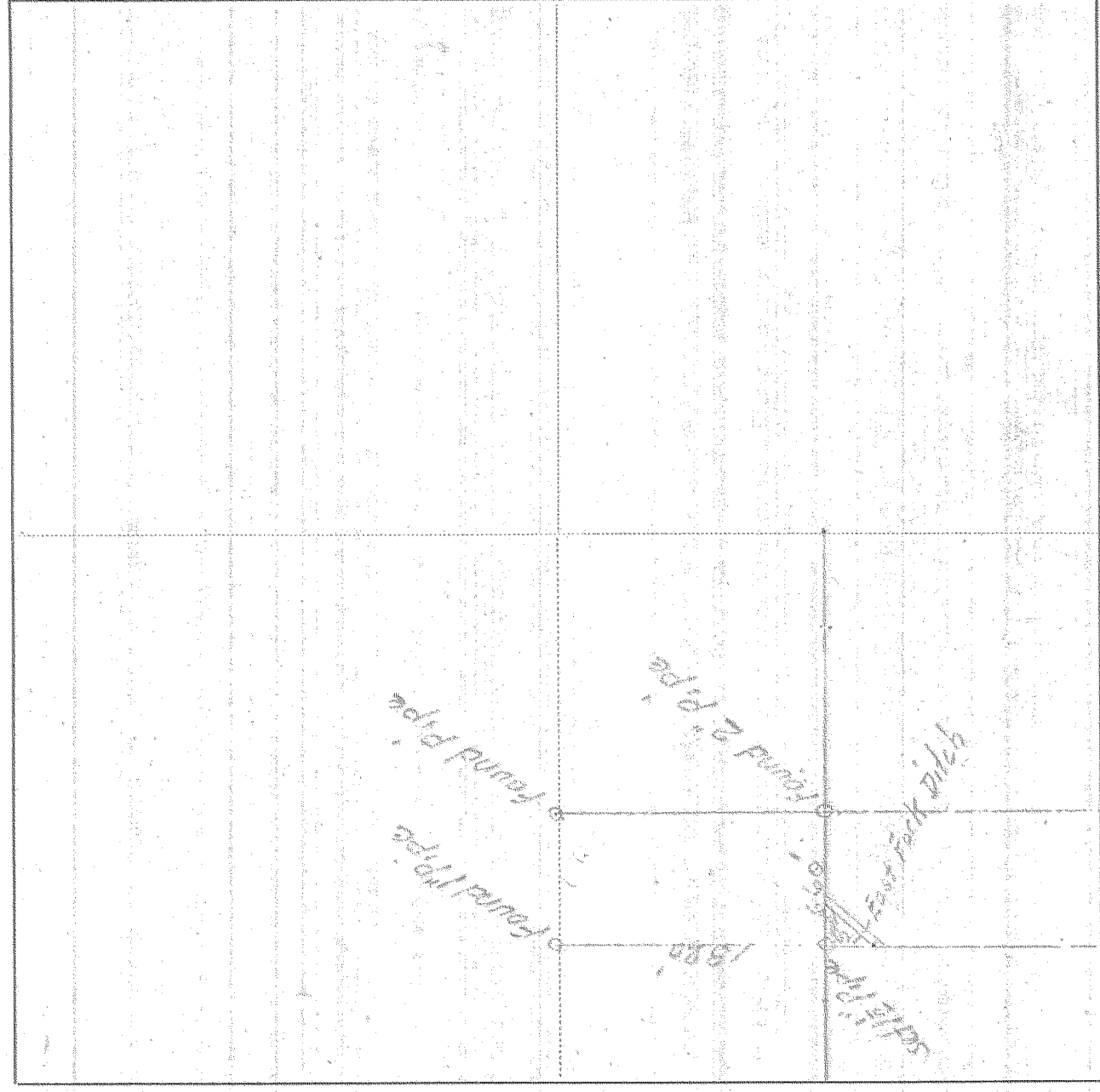


SURVEY IN S 1/4 SECT. 1 TWP. 1 N RANGE 10 EAST W. M.

FOR Hood River County DATE Apr. 24, 1951



Scale 1 inch = 400 ft.

I do hereby certify that this sketch was made from notes taken during an actual survey by me on Apr. 24 1951, and that it correctly represents the field work of said survey.

John A. Johnson
County Surveyor
Hood River County, O

Helpers Bill Farrow & Hiramasa

0050

1050