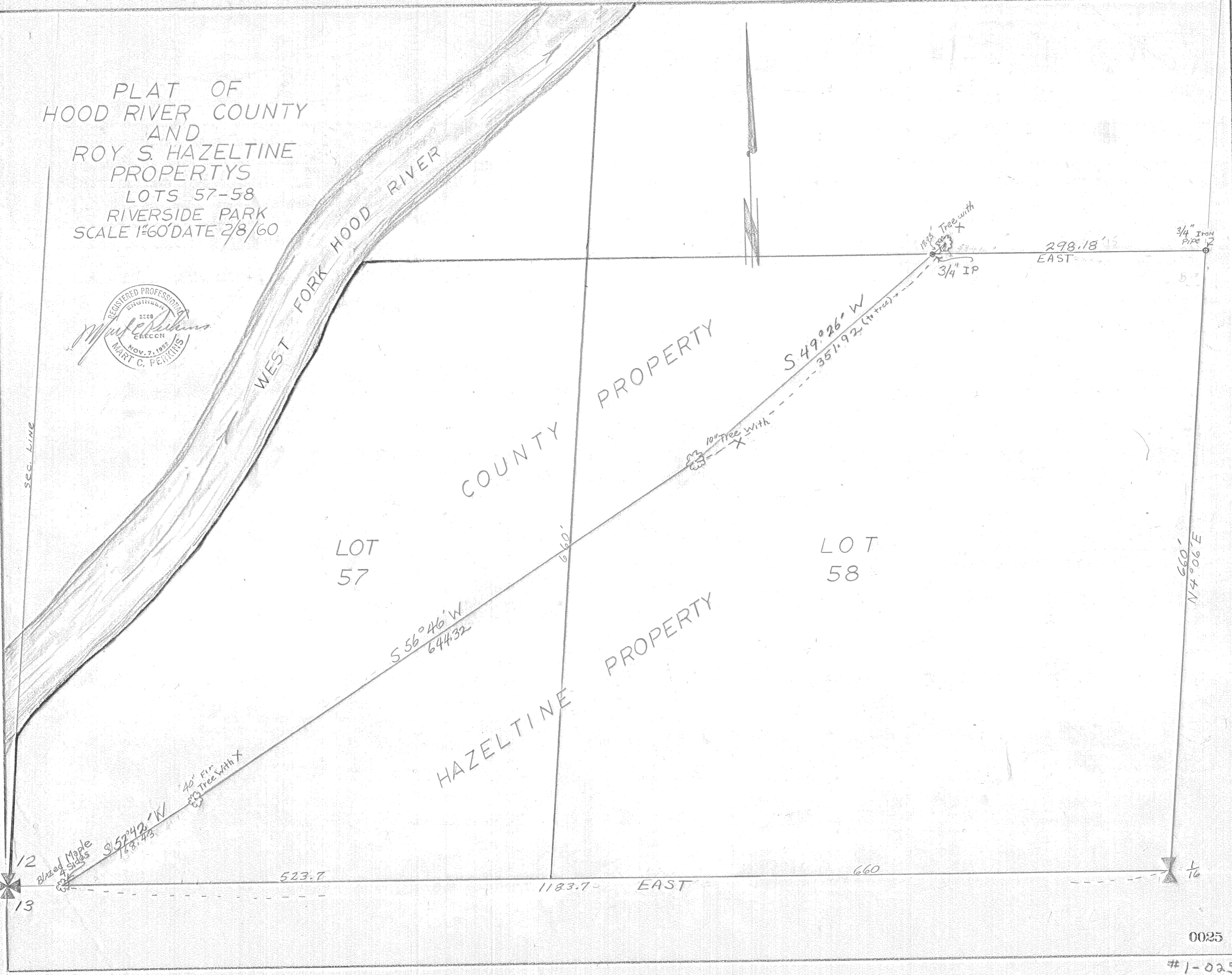
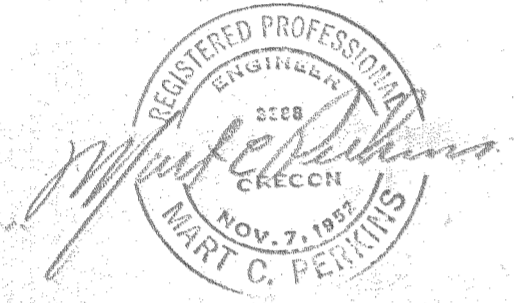


PLAT OF
HOOD RIVER COUNTY
AND
ROY S. HAZELTINE
PROPERTY
LOTS 57-58
RIVERSIDE PARK
SCALE 1"=60' DATE 2/8/60



11 12
14 13

Blazed Maple
4" dia

S 57° 42' W
168.43

40" Fir
Tree with X

523.7

S 56° 46' W
644.32

1183.7 EAST

660'

HAZELTINE
PROPERTY

LOT
57

COUNTY

PROPERTY

S 49° 26' W
351.92 (to tree)

10" Tree with
X

100' Tree with
X

3/4" IP

298.18
EAST

3/4" Iron
Pipe

660

660'
N 4° 06' E

1/16

0025

#1-025