

VANBOWE SUBDIVISION

PART OF THE S.W. 1/4 OF SECTION 35, T. 3 N., R. 10 E., W.M., HOOD RIVER COUNTY, OREGON

SURVEYOR'S CERTIFICATE

I, ROY O. GAYLORD, REGISTERED PROFESSIONAL LAND SURVEYOR FOR THE STATE OF OREGON, BEING FIRST DULY SWORN, DEPOSE AND SAY THAT I HAVE CORRECTLY SURVEYED AND MARKED WITH LEGAL MONUMENTS THE LAND REPRESENTED ON THE ANNEXED PLAT OF VANBOWE SUBDIVISION TO THE COUNTY OF HOOD RIVER, STATE OF OREGON AND THAT AN ALUMINUM MONUMENT 2 1/2 INCHES IN DIAMETER WAS SET AT THE INITIAL POINT OF A PARCEL OF LAND LOCATED IN THE SOUTHWEST QUARTER OF SECTION 35, T. 3 N., R. 10 E., W.M. IN THE COUNTY OF HOOD RIVER AND STATE OF OREGON, BEING MORE PARTICULARLY DESCRIBED AS FOLLOWS;

COMMENCING AT THE S. 1/4 CORNER OF SECTION 35; THENCE WEST ALONG THE SOUTH LINE OF THE SECTION 763.39 FEET TO THE S.E. CORNER OF THAT PARCEL CONVEYED TO L. RONALD VAN METRE, ET. UX., BY INSTRUMENT AS FILED UNDER HOOD RIVER COUNTY MICROFILM NO. 721917 DATED OCT. 6, 1972, SAID POINT BEING IN THE WEST LINE OF FOXLEY ADDITION TO HOOD RIVER COUNTY; THENCE N. 00° 51' 21" W. 250.01 FEET TO THE POINT OF BEGINNING; THENCE CONTINUING N. 00° 51' 21" W. ALONG THE WEST LINE OF SAID ADDITION AND ITS EXTENSION, 370.28 FEET; THENCE S. 89° 02' 19" W. 101.71 FEET; THENCE N. 05° 24' 50" W. 144.67 FEET; THENCE S. 89° 02' 42" W. 119.08 FEET; THENCE N. 00° 51' 34" W. 140.95 FEET TO THE NORTH LINE OF THAT PARCEL CONVEYED TO CHARLES S. BOWE, ET. UX., BY HOOD RIVER COUNTY MICROFILM 721916, DATED OCT. 6, 1972; THENCE S. 89° 28' 41" W. 500.00 FEET TO THE N.W. CORNER THEREOF; THENCE S. 00° 51' 34" E. ALONG THE WEST LINE THEREOF 875.70 FEET; THENCE N. 88° 57' 10" E. PARALLEL WITH THE SOUTH LINE OF SAID SECTION, 388.27 FEET TO THE POINT OF BEGINNING.

SUBSCRIBED AND SWORN BEFORE ME THIS 24 DAY OF SEP, 1986
James B. Freibiger
NOTARY PUBLIC FOR THE STATE OF OREGON
MY COMMISSION EXPIRES: 11/18/1989

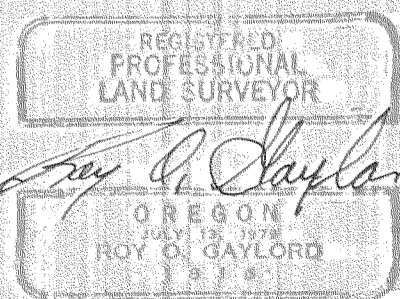


INITIAL POINT
SET 2 1/2" x 30" ALUMINUM MONUMENT WITH 3/8" x 3/8" IRON ROD INSIDE.
S. 1/4 CORNER SECTION 35, T. 3 N., R. 10 E., W.M., 20 AS PER RECORD
FOXLEY ADDITION = 763.62' N 2
S. 1/4 CORNER SECTION 35, T. 3 N., R. 10 E., W.M., 20 AS PER RECORD

LEGEND

- = FOUND MONUMENT OF RECORD SET BY TENNESSEN ENG. CO.
- = SET 3/8" x 30" IRON ROD WITH CAP

TERRA SURVEYING
P.O. BOX 617
HOOD RIVER, OREGON
DRAWN BY: [Signature]
C.H. Reddy



COVENANTS & RESTRICTIONS

ALL LOTS IN VANBOWE SUBDIVISION SHALL INCORPORATE THE COVENANTS AND RESTRICTIONS AS DECLARED BY CHARLES S. BOWE, HAZEL D. BOWE, RONALD VAN METRE AND MARLENE L. VAN METRE IN THE ARTICLE "DECLARATION OF COVENANTS, CONDITIONS AND RESTRICTIONS FOR VANBOWE SUBDIVISION" AS FILED AND RECORDED WITH THE COUNTY OF HOOD RIVER.

DEDICATION

WE, CHARLES S. BOWE, HAZEL D. BOWE, RONALD VAN METRE AND MARLENE L. VAN METRE, AS OWNERS IN FEE SIMPLE OF THE LAND SHOWN ON THE ANNEXED PLAT AND MORE PARTICULARLY DESCRIBED ON THE SURVEYOR'S CERTIFICATE HEREOF, HEREBY DEDICATE TO THE PUBLIC FOREVER ALL STREETS AND PUBLIC EASEMENTS SHOWN ON SUCH PLAT AND THAT WE DECLARE THE ANNEXED PLAT OF VANBOWE SUBDIVISION TO BE CORRECT PLAT AS LOCATED IN THE SOUTHWEST QUARTER OF SECTION 35, TOWNSHIP 3 NORTH, RANGE 10 EAST OF THE WILLAMETTE MERIDIAN IN HOOD RIVER COUNTY, OREGON.

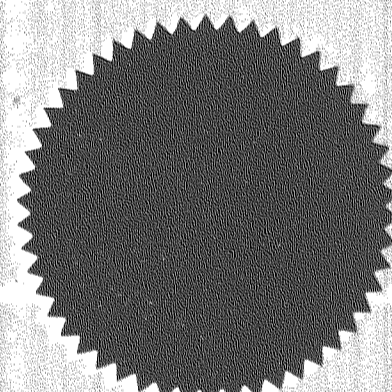
[Signature] CHARLES S. BOWE
[Signature] RONALD VAN METRE

[Signature] HAZEL D. BOWE
[Signature] MARLENE L. VAN METRE

ACKNOWLEDGEMENT

ON THIS 27 DAY OF SEP, 1986, BEFORE ME, A NOTARY PUBLIC FOR THE STATE OF OREGON, PERSONALLY APPEARED CHARLES S. BOWE, HAZEL D. BOWE, RONALD VAN METRE AND MARLENE L. VAN METRE, KNOWN TO ME, WHO BEING FIRST DULY SWORN, SAID THAT THEY DID SIGN THIS INSTRUMENT OF THEIR FREE AND VOLUNTARY ACT, SUBSCRIBED AND SWORN BEFORE ME THIS 27 DAY OF SEP, 1986

NOTARY PUBLIC FOR THE STATE OF OREGON
MY COMMISSION EXPIRES: 5/12/88



APPROVALS

THE DIRECTOR OF RECORDS AND ASSESSMENTS AND DIRECTOR OF BUDGET AND FINANCE AND TAX COLLECTOR, RESPECTIVELY, OF HOOD RIVER COUNTY, OREGON, HEREBY CERTIFY THAT WE HAVE EXAMINED THE ANNEXED PLAT OF VANBOWE SUBDIVISION IN HOOD RIVER COUNTY, OREGON AND THE NAME ADOPTED FOR SAID PLAT IS A PROPER NAME AND NOT INCLUDED IN ANY OTHER SUBDIVISION IN HOOD RIVER COUNTY, AND FURTHER CERTIFY THAT ALL ASSESSMENTS DUE HEREON HAVE BEEN FULLY PAID AS REQUIRED BY LAW AND WE HEREBY APPROVE SAID PLAT.

- [Signature] Paul F. Helton, HOOD RIVER COUNTY DIRECTOR OF BUDGET AND FINANCE AND TAX COLLECTOR
- [Signature] Howard M. With, HOOD RIVER COUNTY DIRECTOR OF RECORDS AND ASSESSMENTS
- THE ANNEXED PLAT OF VANBOWE SUBDIVISION WAS EXAMINED AND APPROVED THIS 3 DAY OF April, 1986
- [Signature] Donald L. Brune, HOOD RIVER COUNTY DIRECTOR OF PUBLIC WORKS
- THE ANNEXED PLAT OF VANBOWE SUBDIVISION WAS EXAMINED AND APPROVED THIS 3 DAY OF April, 1986
- [Signature] Frank O. Backus, HOOD RIVER COUNTY PLANNING COMMISSION CHAIRMAN
- [Signature] Michael [unclear], ATTESTED
- THE ANNEXED PLAT OF VANBOWE SUBDIVISION WAS EXAMINED AND APPROVED THIS 7 DAY OF April, 1986
- [Signature] Jerry [unclear], HOOD RIVER COUNTY COMMISSIONER'S CHAIRMAN
- [Signature] Bourley A. Bauland Trade Mills, COMMISSIONER
- THE ANNEXED PLAT OF VANBOWE SUBDIVISION WAS EXAMINED AND APPROVED THIS 7 DAY OF April, 1986
- [Signature] Richard P. Arndt, HOOD RIVER COUNTY SURVEYOR
- THE ANNEXED PLAT OF VANBOWE SUBDIVISION WAS EXAMINED AND APPROVED THIS 2 DAY OF April, 1986
- [Signature] Peter R. Harrio, HOOD RIVER CITY ENGINEER
- THE ANNEXED PLAT OF VANBOWE SUBDIVISION WAS EXAMINED AND I HEREBY CERTIFY ALL STATE AND COUNTY HEALTH REQUIREMENTS HAVE BEEN COMPLIED WITH THIS 4 DAY OF April, 1986
- [Signature] Gert Gittel, HOOD RIVER COUNTY SANITARIAN
- FILED FOR RECORD THIS 8 DAY OF April, 1986
- [Signature] [unclear], HOOD RIVER COUNTY DIRECTOR OF RECORDS & ASSESSMENTS

