

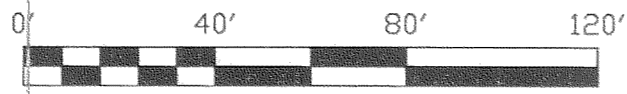
NARRATIVE:

THE PURPOSE OF THIS SURVEY WAS TO CREATE A PLANNED UNIT DEVELOPMENT FOR HOUSING FOR PEOPLE, INC. THE DEVELOPMENT IS COMPRISED OF 36 RESIDENTIAL LOTS AND 3 TRACTS OF LAND DEDICATED FOR NO BUILD AREAS SET ASIDE FOR OPEN SPACE.

LOCATION:

A PORTION OF THE PLATTED L.F. HENDERSON SUBDIVISION LOCATED IN THE SOUTHEAST QUARTER OF THE NORTHEAST QUARTER OF SECTION 34, TOWNSHIP 3 NORTH, RANGE 10 EAST, WILLAMETTE MERIDIAN, HOOD RIVER COUNTY, OREGON.

"HOPE TERRACE PUD" for HOUSING FOR PEOPLE, INC. - H.O.P.E.



SCALE: 1" = 40'

NOTE:

ALL OPEN SPACE HAD BEEN DELINEATED AS NO BUILD AREAS

OPEN SPACE AREAS TRACT A = 28,890 Sq. Ft., ± TRACT B = 10,635 Sq. Ft., ± TRACT C = 6,200 Sq. Ft., ± TRACT D = 20,635 Sq. Ft., ±

FOUND BRASS CAP IN MONUMENT CASE @ THE NE CORNER OF THE SE 1/4 OF THE NE 1/4 OF SECTION 34.

FOUND HOOD RIVER COUNTY BRASS CAP IN MONUMENT BOX @ THE NW CORNER OF THE NW 1/4 OF THE SE 1/4 OF SECTION 34.

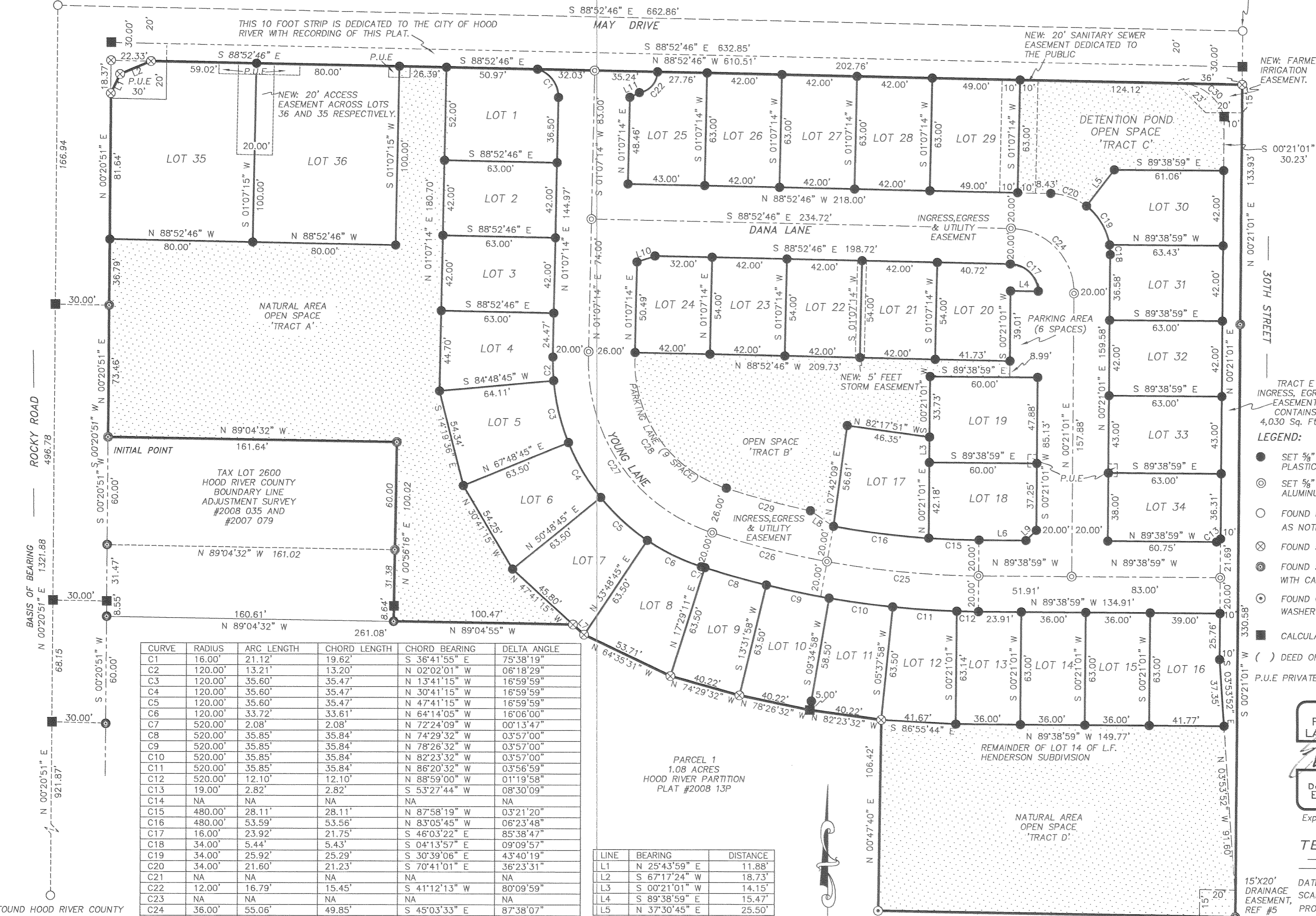


Table with 2 columns: LOT # and SQUARE FEET ±. Lists lots 1 through 36 with their respective areas.

- LEGEND: Symbols for iron rods, monuments, found rods, concrete screws, calculated points, deed/plat calls, private utility easements.

Table with 6 columns: CURVE, RADIUS, ARC LENGTH, CHORD LENGTH, CHORD BEARING, DELTA ANGLE. Lists curves C1 through C30.

Table with 3 columns: LINE, BEARING, DISTANCE. Lists lines L1 through L11.

REGISTERED PROFESSIONAL LAND SURVEYOR

[Signature]

OREGON December 30, 2009 ERIK M. CARLSON 72306

Expires: December, 2009

TERRA SURVEYING

DATE: JULY 17, 2008 SCALE: 1" = 40' PROJECT: 207059PUD ASSESSORS MAP: 3N-10E-34A P.O. BOX 617 HOOD RIVER, OREGON 97031 PHONE & FAX: (541) 386-4531 E-Mail: terra@gorge.net

NOTES: As per D.R.S. 92.120(3) I, Erik M. Carlson, certify this plat to be an exact copy of the original plat recorded in the county recorder's office.

SCALE: 1" = 40'

"HOPE TERRACE PUD"
for
HOUSING FOR PEOPLE, INC. — H.O.P.E.

HOOD RIVER COUNTY
SURVEYOR'S OFFICE

CS# 2008 05B

DATE FILED: 8-26-08

BY: [Signature]

NOTE:
As per O.R.S. 92.120(3) I, Erik M. Carlson,
certify this survey plat to be an exact copy of the
original plat recorded in the county
recorders office.

REGISTERED
PROFESSIONAL
LAND SURVEYOR

[Signature]
OREGON
December 30, 2009
ERIK M. CARLSON
72306

Expires: December, 2009

SURVEYOR'S CERTIFICATE:

I, ERIK M. CARLSON, REGISTERED LAND SURVEYOR FOR THE STATE OF OREGON, BEING FIRST DULY SWORN, DEPOSED AND SAY THAT I HAVE CORRECTLY SURVEYED THE PROPERTY DESCRIBED IN THE LEGAL DESCRIPTION AND MARKED WITH LEGAL MONUMENTS THE LAND REPRESENTED ON THE PLAT OF "HOPE TERRACE PUD" HOOD RIVER COUNTY, STATE OF OREGON.

[Signature]
ERIK M. CARLSON PLS 72306

LEGAL DESCRIPTION OF THE SUBDIVISION:

Parcel 2 of Hood River County Partition Plat #2008 13P as recorded on June 24, 2008. Located in the Southeast quarter of the Northeast quarter of Section 34, Township 3 North, Range 10 East of the Willamette Meridian, in the County of Hood River and State of Oregon,

EXCEPTING THEREFROM any portion of the above described parcels that may be contained within a public road right of way.

APPROVALS:

THE PLAT OF "HOPE TERRACE PUD"
WAS EXAMINED AND APPROVED BY ME
THIS 18TH DAY OF July, 2008
[Signature]
HOOD RIVER COUNTY SURVEYOR

THE PLAT OF "HOPE TERRACE PUD"
WAS EXAMINED AND APPROVED BY ME
THIS 23RD DAY OF July, 2008
[Signature]
CITY OF HOOD RIVER DIRECTOR OF PUBLIC WORKS

THE PLAT OF "HOPE TERRACE PUD"
WAS EXAMINED AND APPROVED BY ME
THIS 13TH DAY OF AUGUST, 2008
[Signature]
CITY OF HOOD RIVER RECORDER

THE PLAT OF "HOPE TERRACE PUD"
WAS EXAMINED AND APPROVED BY ME
THIS 13TH DAY OF August, 2008
[Signature]
CITY OF HOOD RIVER PLANNING DIRECTOR

THE PLAT OF "HOPE TERRACE PUD"
WAS EXAMINED AND APPROVED BY ME
THIS 13TH DAY OF August, 2008
[Signature]
CITY OF HOOD RIVER MAYOR

THE PLAT OF "HOPE TERRACE PUD"
WAS EXAMINED AND APPROVED BY ME
THIS 4TH DAY OF August, 2008
[Signature]
CHAIRMAN HOOD RIVER COUNTY COMMISSIONERS

THE PLAT OF "HOPE TERRACE PUD"
WAS EXAMINED AND APPROVED BY ME
THIS 4TH DAY OF August, 2008
[Signature]
HOOD RIVER COUNTY COMMISSIONER

THE PLAT OF "HOPE TERRACE PUD"
WAS EXAMINED AND APPROVED BY ME
THIS 9TH DAY OF August, 2008
[Signature]
HOOD RIVER COUNTY COMMISSIONER

THE PLAT OF "HOPE TERRACE PUD"
WAS EXAMINED AND APPROVED BY ME
THIS 4TH DAY OF August, 2008
[Signature]
HOOD RIVER COUNTY COMMISSIONER

THE PLAT OF "HOPE TERRACE PUD"
WAS EXAMINED AND APPROVED BY ME
THIS _____ DAY OF _____, 200...

HOOD RIVER COUNTY COMMISSIONER

DECLARATION OF PLANNED COMMUNITY:

THE "DECLARATION OF PLANNED COMMUNITY" FOR THE PLAT OF "HOPE TERRACE PUD", IS MADE BY HOUSING FOR PEOPLE, INC. AND DESCRIBED IN THE HOOD RIVER COUNTY DEED INSTRUMENT FILE FOR RECORD AS MICROFILM No. 200803297 HOOD RIVER COUNTY, OREGON.

DECLARATION:

KNOW ALL PERSONS BY THESE PRESENTS THAT HOUSING FOR PEOPLE, INC., DOES HEREBY MAKE, ESTABLISH & DECLARE THE PLAT MAP TO BE A TRUE & CORRECT MAP OF THE LAND OWNED & LAID OUT AS THE PLAT OF "HOPE TERRACE PUD" IN ACCORDANCE WITH ORS CHAPTER 92 AND HEREBY DEDICATES TO THE CITY OF HOOD RIVER SAID LAND BEING MORE PARTICULARLY DESCRIBED IN THE SURVEYOR'S CERTIFICATE HERETO AND AS SHOWN ON THIS PLAT MAP.

[Signature]
REPRESENTATIVE OF "HOUSING FOR PEOPLE, INC."

REFERENCES:

- PLAT MAP OF THE LAND OF L.F. HENDERSON, DATED JULY 1905.
- HOOD RIVER COUNTY SURVEY NO. 87022, PLS 1815, DATED MAY 1987.
- HOOD RIVER COUNTY SURVEY NO. 97057, PLS 1028, DATED SEPT. 1997.
- HOOD RIVER COUNTY SURVEY NO. 96032, PLS 932, DATED MAY 1996.
- HOOD RIVER COUNTY SURVEY NO. 93106, PLS 1028, DATED DEC. 1993.
- HOOD RIVER COUNTY SURVEY NO. 95022, PLS 2393, DATED APRIL 3, 1995.
- HOOD RIVER COUNTY SURVEY NO. 96002, PLS 2393, DATED JAN. 5, 1996.
- HOOD RIVER COUNTY SURVEY NO. 84065, PLS 932, DATED DEC. 17, 1984.
- HOOD RIVER COUNTY SURVEY NO. 80063, COUNTY, DATED JULY 16, 1980.
- HOOD RIVER COUNTY SURVEY NO. 2004069, PLS 1815, DATED OCT. 22, 2004.
- HOOD RIVER COUNTY SURVEY NO. 2005006, PLS 1815, DATED JAN. 24, 2005.
- HOOD RIVER COUNTY SURVEY NO. 2007079, PLS 1815, DATED JULY 12, 2007.
- HOOD RIVER COUNTY SURVEY NO. 2008035, PLS 72306, DATED APRIL 29, 2008.
- HOOD RIVER COUNTY PLAT NO. 2008 13P, PLS 72306, DATED JUNE 24, 2008.

EASEMENT REFERENCES:

1. HOOD RIVER COUNTY RECORD EASEMENT BOOK I, PAGE 586. NOT APPLICABLE TO THIS QUARTER OF SECTION 34.
2. HOOD RIVER COUNTY RECORD EASEMENT BOOK 43, PAGE 328. GENERAL DESCRIPTION, UNABLE TO LOCATE.
3. HOOD RIVER COUNTY RECORD EASEMENT BOOK 49, PAGE 473. APPROXIMATELY LOCATED ON THE WEST LINE OF THIS PROPERTY.
4. HOOD RIVER COUNTY RECORD EASEMENT NO. 2000 4594. COMMUNICATIONS EASEMENT, DESCRIBED AS 30' X 30' SQUARE, BEGINNING AT THE NORTHWEST CORNER OF RECORD DEED #934333 WHICH IS IN THE PUBLIC RIGHT OF WAY OF ROCKY ROAD.
5. HOOD RIVER COUNTY RECORD EASEMENT NO. 2007 0950. DRAINAGE EASEMENT BENEFITS THE CITY OF HOOD RIVER.

ACKNOWLEDGMENT:

STATE OF Oregon)
COUNTY OF Hood River) SS:

THIS INSTRUMENT WAS ACKNOWLEDGED BEFORE ME ON July 18, 2008
BY Gary Young AS A REPRESENTATIVE OF HOUSING FOR PEOPLE, INC.

[Signature]
NAME OF NOTARY (PRINT)
Renee Webb
SIGNATURE OF NOTARY
403958
COMMISSION NUMBER
MY COMMISSION EXPIRES: 5-25-2010

TERRA SURVEYING

DATE: JULY 17, 2008
PROJECT: 207059PUD
ASSESSORS MAP: 3N-10E-34A
P.O. BOX 617
HOOD RIVER, OREGON 97031
PHONE & FAX: (541) 386-4531
E-Mail: terra@gorge.net

THE DIRECTOR OF RECORDS AND ASSESSMENTS, AND THE DIRECTOR OF BUDGET AND FINANCE AND TAX COLLECTOR, RESPECTIVELY, OF HOOD RIVER COUNTY, OREGON, HEREBY CERTIFY THAT WE HAVE EXAMINED THE PLAT OF "HOPE TERRACE PUD" IN THE COUNTY OF HOOD RIVER AND THAT THE NAME ADOPTED FOR SAID PLAT IS A PROPER NAME AND NOT INCLUDED IN ANY OTHER SUBDIVISION IN HOOD RIVER COUNTY, AND FURTHER CERTIFY THAT ALL ASSESSMENTS DUE HEREON HAVE BEEN FULLY PAID AS REQUIRED BY LAW AND WE HEREBY APPROVE SAID PLAT.

[Signature]
HOOD RIVER COUNTY DIRECTOR OF BUDGET
FINANCE & TAX COLLECTOR
[Signature]
HOOD RIVER COUNTY DIRECTOR OF RECORDS,
AND ASSESSMENTS