

# PLAT OF EMRY'S ADDITION

TO THE CITY OF  
HOOD RIVER, HOOD RIVER COUNTY, OREGON  
BEING A PORTION OF LOT 7, ADAMS PARADISE ACREAGE  
IN THE  
SW 1/4 OF NE 1/4 SECTION 35, TWP. 3 N., R. 10 E., W.M.

SCALE 1" = 50.0'

## ENGINEERS CERTIFICATE;

I, Donald J. Branton, registered professional engineer for the State of Oregon being first duly sworn, depose and say that I have correctly surveyed and marked with legal monuments the land represented on the annexed plat of EMRY'S ADDITION to Hood River, in Hood River County, Oregon; that a 2"X36" galvanized iron pipe was set at the initial point, said initial point being N0°08'45"E 648.10 feet from the most Easterly S.E. corner of lot 7, Adams Paradise Acreage in SW1/4 of NE 1/4, Section 35, Twp. 3 N., Range 10 E., W.M., and said point also being 1657.67 feet South and 475.51 feet East of the N. 1/4 Cor. of said Sec. 35; that the properties platted are described as follows:

Beginning at the aforesaid initial point, thence N89°23'15" W 422.32 feet, thence N0°14'15" E 346.00 feet, thence S89°48'45" E 421.74 feet, thence S0°08'45" W 349.16 feet to the point of beginning of this description.

Subscribed and sworn before me this 15<sup>th</sup> day of August 1963.

James L. Hagy  
Notary Public for the State of Oregon

My commission expires Jan 3, 1964

We, Kenneth W. Kirby and Rupert L. Gillmouthe, Assessor and Sheriff respectively of Hood River County, Oregon, hereby certify that we have examined the annexed plat of EMRY'S ADDITION in Hood River County, Oregon and the name adopted for said plat is a proper name and not included in any other Subdivision in Hood River County and further certify that all assessments due thereon have been fully paid as required by law and we hereby approve said plat.

Kenneth W. Kirby  
Hood River County Assessor  
Rupert L. Gillmouthe  
Hood River County Sheriff

The annexed plat of EMRY'S ADDITION was examined and approved this 21 day of Aug 1963.

Lewis A. Toppins  
Hood River County Judge  
Earl A. Moore  
County Commissioner

County Commissioner

The annexed plat of EMRY'S ADDITION was examined and approved this 21 day of August 1963.

D. Daniels  
Chairman, City of Hood River  
Planning Commission

The annexed plat of EMRY'S ADDITION was examined and approved this 21 day of AUGUST 1963.

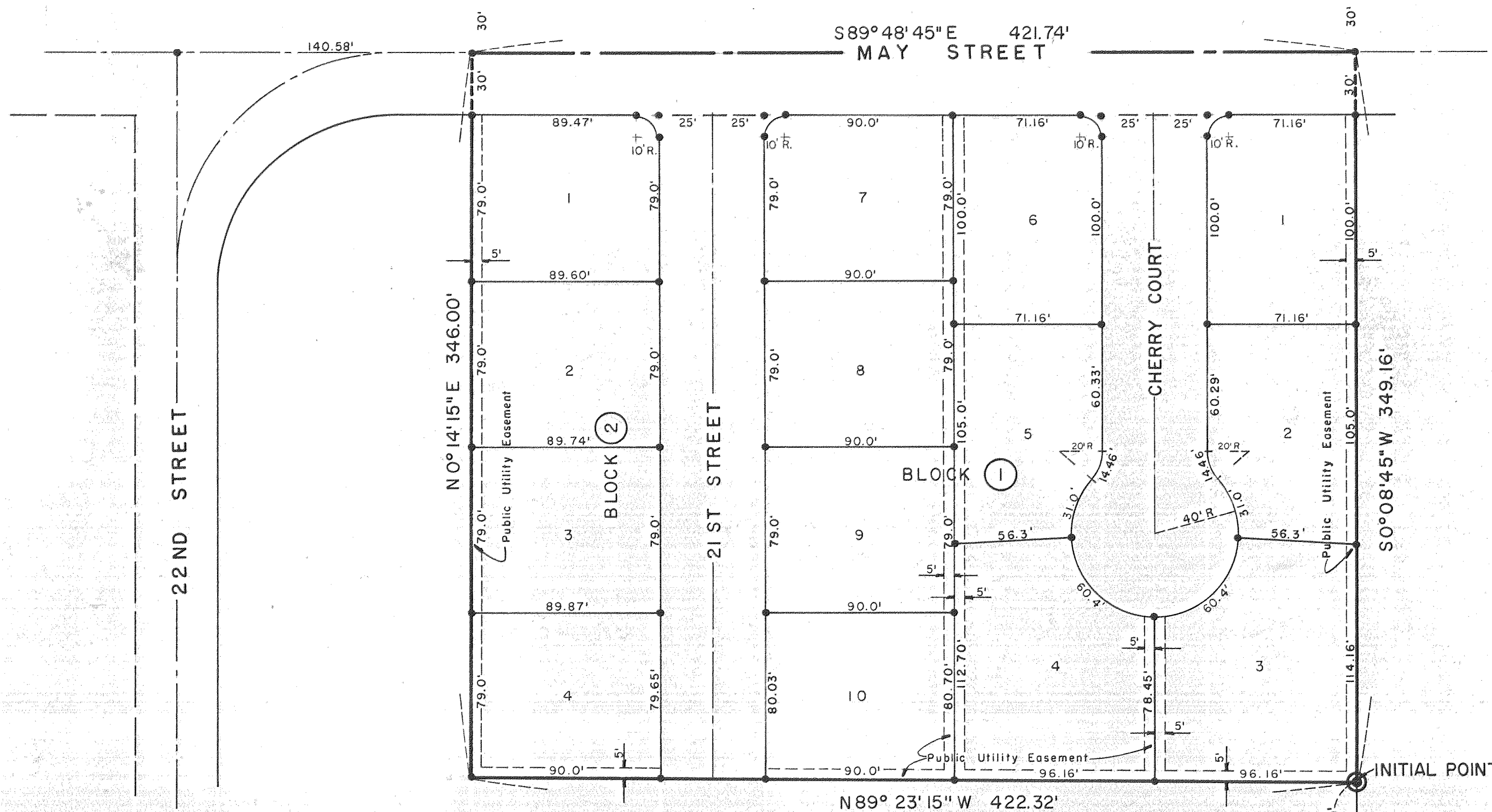
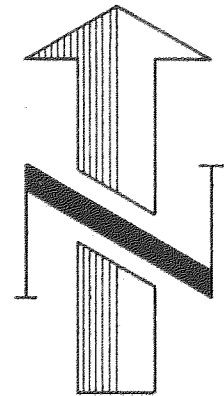
Bruce J. Clausen  
City of Hood River, Engineer

On this 21<sup>st</sup> day of August 1963, before me appeared D.E. Erwin and Mary A. Erwin both to me personally known, who being duly sworn, did say that he, the said D.E. Erwin is the president, and she, the said Mary A. Erwin is the secretary of D.E. Erwin Inc. the within named Corporation, and the seal affixed to said instrument is the corporate seal of said corporation, and that the instrument was signed and sealed in behalf of said corporation by authority of its Board of Directors, and D.E. Erwin and Mary A. Erwin acknowledged said instrument to be the free act and deed of said corporation.

By D.E. Erwin By Mary A. Erwin

James J. Bree  
Notary Public for the State of Oregon

My commission expires April 25, 1966



### DEDICATION;

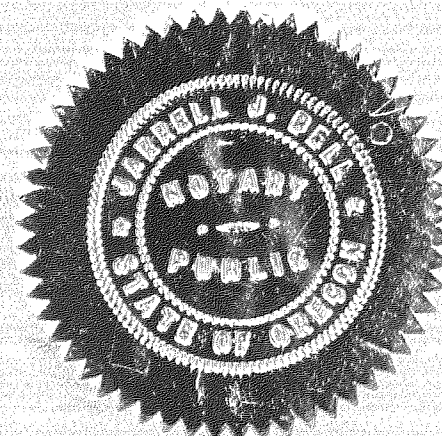
We, Nelson Emry and Ruth D. Emry, husband and wife and the D.E. Erwin Inc. an Oregon Corporation as owners in fee simple of the land shown on the annexed plat and more particularly described in the engineers certificate hereunto attached, hereby dedicate to the public forever all parks, streets, and easements shown on such plat and that we declare the annexed plat of EMRY'S ADDITION to Hood River to be a correct plat as located in Section 35, T.3N., R.10E., W.M. in Hood River County, Oregon.

By Nelson Emry By Ruth D. Emry  
D.E. Erwin Inc. D.E. Erwin Inc.  
By D.E. Erwin By Mary A. Erwin  
President Secretary

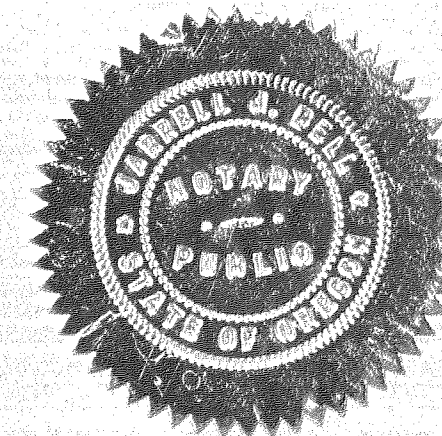


On this 21 day of August 1963, before me a Notary Public for the State of Oregon, personally appeared Nelson Emry and Ruth D. Emry, husband and wife, known to me, who first being duly sworn, say that they did sign this instrument of their free and voluntary act.

James J. Bree  
Notary Public for the State of Oregon  
My commission expires April 25, 1966



Easterly S. E. Cor.  
Lot 7 A.P.A.  
Fd. I.P.



FILED \_\_\_\_\_

AUG 23 11 45 AM 1963  
D. Daniels  
CLERK

106659  
FILED