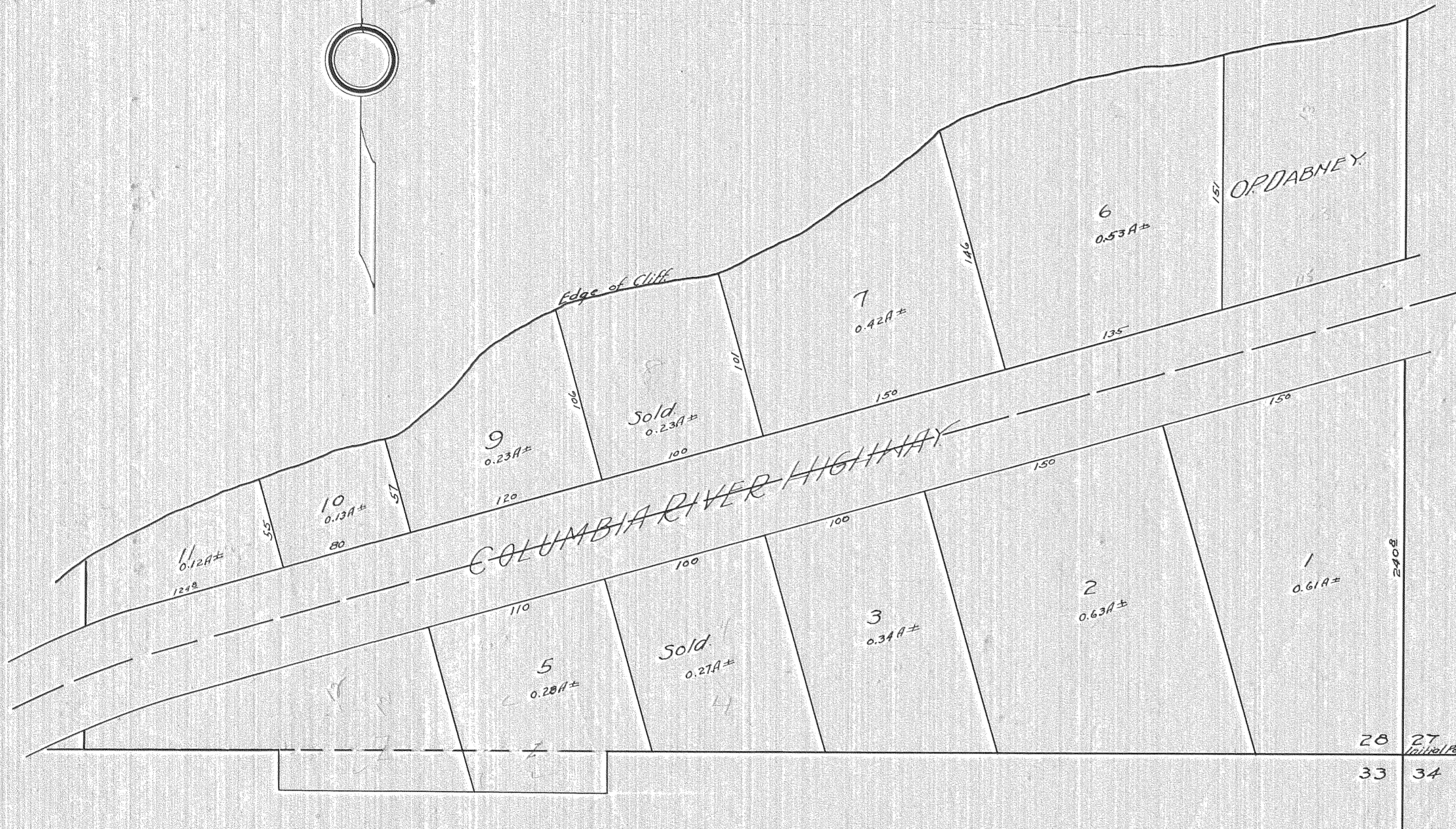
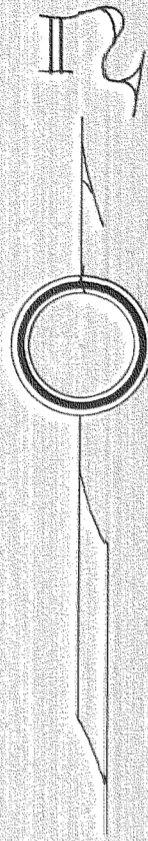


CLIFTON PARK SUBDIVISION.



Scale 1 in. = 60 ft.

DEDICATION.

KNOW ALL MEN BY THESE PRESENTS, that M.R. HOBLE does hereby certify that he is the owner of the land represented on the plat designated "CLIFTON PARK SUBDIVISION" and described as follows: part of the S.E. 1/4 of the S.E. 1/4 of Section 28, T.3 N., R. 10 E., M. 11 N., HOOD RIVER COUNTY, OREGON; that he has laid out the land in tracts of the sizes shown on the plat. IN WITNESS WHEREOF, he has hereunto set his hand and seal this 6th day of Sept. 1922.

Witnesses: Anna R. Mellon Signed: M. R. Noble
Gene Morrison

STATE OF OREGON }
COUNTY OF HOOD RIVER } SS

On this 6th day of September, 1922, before me appeared M. R. HOBLE, to me personally known, who, being first duly sworn, did say that he signed the above instrument freely and voluntarily.

In testimony whereof I have hereunto set my hand and affixed my Notarial Seal this 6th day of September, 1922.

Anna R. Mellon
Notary Public for Oregon.

My Commission expires Oct. 6th, 1923.

CERTIFICATE OF SURVEYOR.

STATE OF OREGON }
COUNTY OF HOOD RIVER } SS

I, A. R. CRUIKSHANK, first being duly sworn depose and say that I have correctly surveyed and marked with proper monuments the land represented on the plat as "CLIFTON PARK SUBDIVISION" and numbered as shown, and described as part of the S.E. 1/4 of the S.E. 1/4 of Section 28, T.3 N., R. 10 E., M. 11 N., and of the initial point of said survey, which is the S. E. corner of said Section 28. I have set a galvanized pipe 1 1/2 inch in diameter and 3 feet long driven level with the surface of the ground.

A. R. Cruikshank
Registered Professional Engineer,
Oregon No. 545
Registered Dec. 8th, 1919

Subscribed and sworn to before me this 6th day of September, 1922.

Anna R. Mellon
Notary Public for Oregon.

My Commission expires Oct. 6th, 1923.

Approved September 6, 1922

Joseph W. Wickham
County Assessor.

Approved September 6, 1922.

W. H. Cruikshank
County Surveyor.

Approved September 6, 1922.

H. S. Scarborough
County Judge.

W. B. Blodgett
County Commissioner.

Attest: Kent Shoemaker

W. H. Blodgett
County Commissioner.
County Clerk.

All taxes including 1st half for 1921 have been paid.

Lee F. Johnson
Sheriff.

By Wm. H. Edicks
Deputy.