

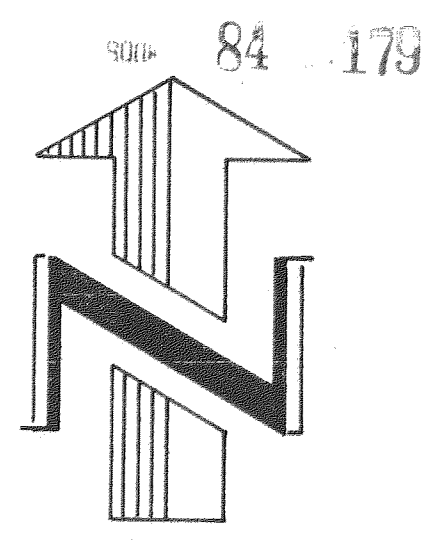
FILED

SEP 21 1 22PM 1965 # 116386

K. H. Kerby, Notary Public
V. Johnston, Deputy
ENGINEERS CERTIFICATE,
Donald J. Rohde, registered professional engineer for the State of Oregon, being first duly sworn, depose and say that I have correctly surveyed and marked with legal monuments the land represented on the annexed plat of Childs Blossom Hill Addition to the city of Hood River in Hood River County, Oregon, that a 2" X 36" galvanized iron pipe was set at the initial point, said initial point being South 1307.45 feet and East 80.76 feet of the North one-quarter corner of Section 35, Twp. 3N., Range 10 E.W.M., that the property platted is described as follows:

Beginning at the aforesaid Initial Point, thence N89° 48' 45" W 674.36 feet; thence N0° 01' 45" E 305.20 feet; thence N89° 48' 45" W 673.50 feet; thence N0° 01' 45" E 347.43 feet; thence S89° 50' 30" E 673.36 feet; thence N89° 34' 15" E 674.72 feet; thence S0° 02' 40" W 332.40 feet; thence S89° 34' 20" E 222.48 feet; thence S0° 13' 20" E 100.00 feet; thence N89° 34' 20" W 100.00 feet; thence N0° 13' 20" W 2.30 feet; thence N89° 34' 20" W 122.95 feet; thence S0° 02' 40" W 230.14 feet to the point of beginning.

All of Lot 16, and a portion of Lot 18, Plat of Adams Paradise Acreage, Hood River County, Hood River, Oregon, is contained in the above described property.

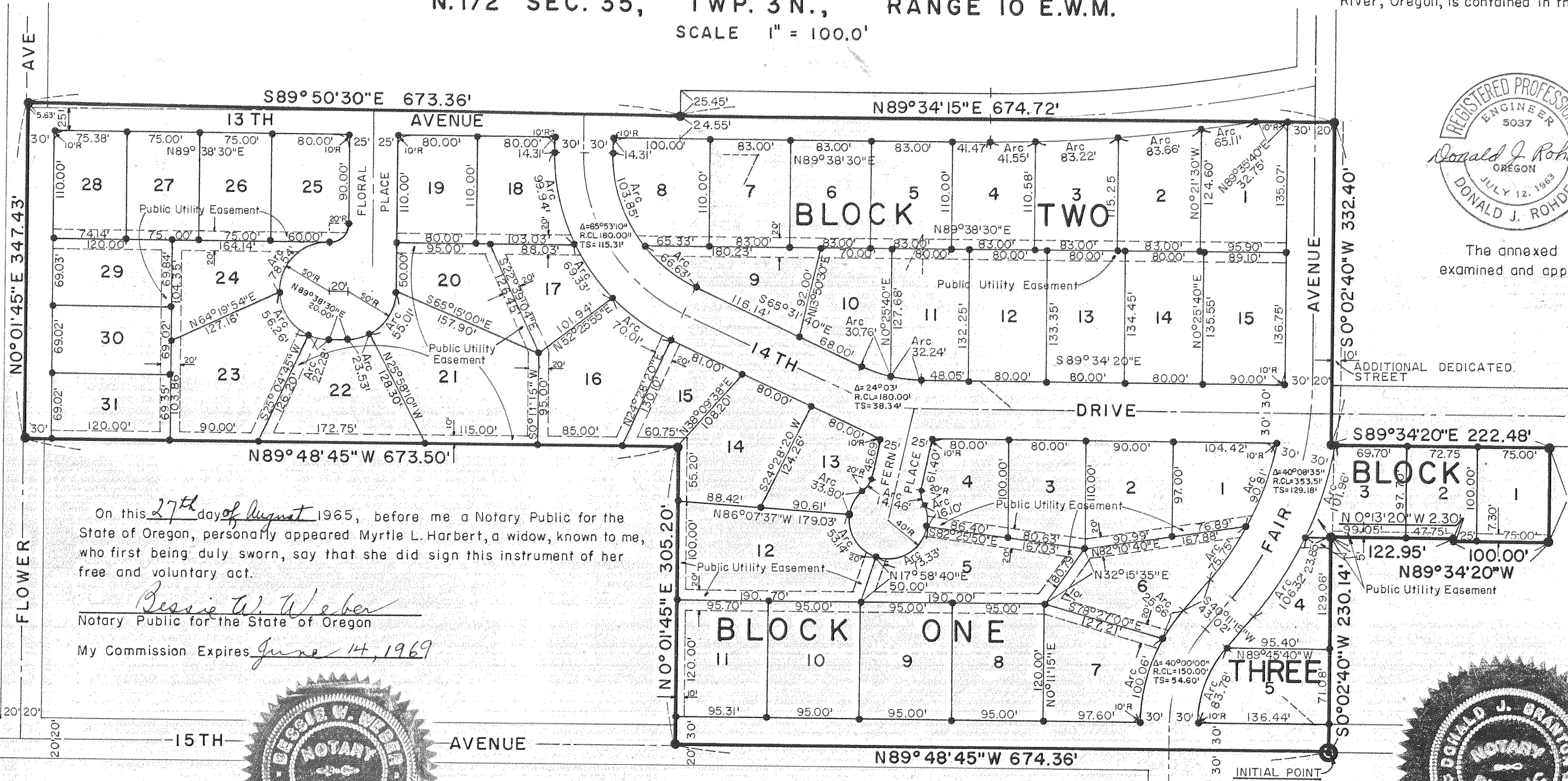


PLAT OF CHILDS BLOSSOM HILL ADDITION

TO THE CITY OF
HOOD RIVER, HOOD RIVER COUNTY, OREGON

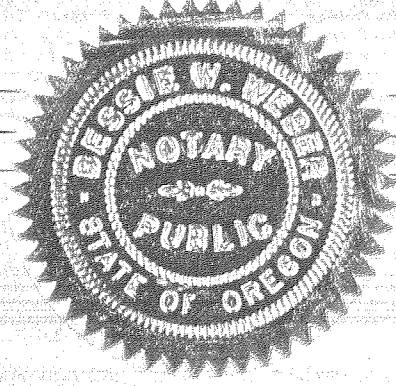
IN THE
N. 1/2 SEC. 35, TWP. 3 N., RANGE 10 E.W.M.

SCALE 1" = 100.0'



On this 27th day of August 1965, before me a Notary Public for the State of Oregon, personally appeared Myrtle L. Harbert, a widow, known to me, who first being duly sworn, say that she did sign this instrument of her free and voluntary act.

Bessie W. Weber
Notary Public for the State of Oregon
My Commission Expires June 14, 1969



DEDICATION; We, Myrtle L. Harbert, a widow, and the D. E. Erwin Inc. an Oregon Corporation as owners in fee simple of the land shown on the annexed plat and more particularly described in the engineers certificate hereunto attached, hereby dedicate to the public forever all parks, streets and easements shown on such plat and that we declare the annexed plat of Childs Blossom Hill Addition to Hood River to be a correct plat as located in Section 35, Township 3N., Range 10 East of the Willamette Meridian in Hood River County, Oregon.

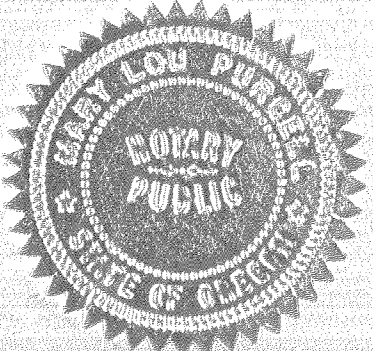
Myrtle L. Harbert
Myrtle L. Harbert
D. E. Erwin Inc.
D. E. Erwin Inc. "President"
Mary A. Erwin
D. E. Erwin Inc. "Secretary"

CORPORATE ACKNOWLEDGEMENT;

On this 7th day of September 1965, before me appeared D. E. Erwin and Mary A. Erwin both to me personally known, who being duly sworn, did say that he, the said D. E. Erwin is the president, and she, the said Mary A. Erwin is the secretary of D. E. Erwin Inc. the within named Corporation, and the seal affixed to said instrument is the corporate seal of said corporation, and that the instrument was signed and sealed in behalf of said corporation by authority of its Board of Directors, and D. E. Erwin and Mary A. Erwin acknowledged said instrument to be the free act and deed of said corporation.



By D. E. Erwin
D. E. Erwin "President"
By Mary A. Erwin
Mary A. Erwin "Secretary"
Mary Lou Russell
Notary Public for the State of Oregon
My commission expires Jan. 4, 1969



The annexed plat of Childs Blossom Hill Addition was examined and approved this 26th day of August 1965.

Henry C. Truif
Hood River County Engineer

The annexed plat of Childs Blossom Hill Addition was examined and approved this 30th day of August 1965.

Dan...
Chairman, City of Hood River Planning Commission

Subscribed and sworn before me this 26th day of August 1965.

Lynda M. Johnson
Notary Public for the State of Oregon

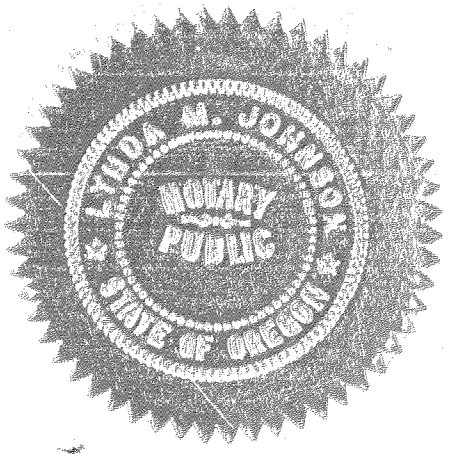
My commission expires August 11, 1969



The annexed plat of Childs Blossom Hill Addition was examined and approved this 7th day of Sept 1965.

R. A. Wilson
Hood River City Mayor

B. G. Fairman
Hood River City Recorder



The annexed plat of Childs Blossom Hill Addition was examined and approved this 7th day of September 1965.

Donald J. Prator
Hood River City Engineer

We, Kenneth W. Kirby and Rupert L. Gillmouthe, Director of Records & Assessments and Sheriff respectively of Hood River County, Oregon, hereby certify that we have examined the annexed plat of Childs Blossom Hill Addition in Hood River County, Oregon and the name adopted for said plat is a proper name and not included in any other Subdivision in Hood River County and further certify that all assessments due thereon have been fully paid as required by law and we hereby approve said plat.

Kenneth W. Kirby
Hood River County Director of Records and Assessments
Rupert L. Gillmouthe
Hood River County Sheriff

Subscribed and sworn before me this 7th day of September 1965.

Donald J. Prator
Notary Public for the State of Oregon

My commission expires 21 July 1968

The annexed plat of Childs Blossom Hill Addition was examined and approved this 12th day of Sept. 1965, by the Hood River Board of Commissioners.

R. D. Barber Commissioner
James G. ... Commissioner
Arthur ... Commissioner
James ... Commissioner

Jan ... Commissioner

FILED: