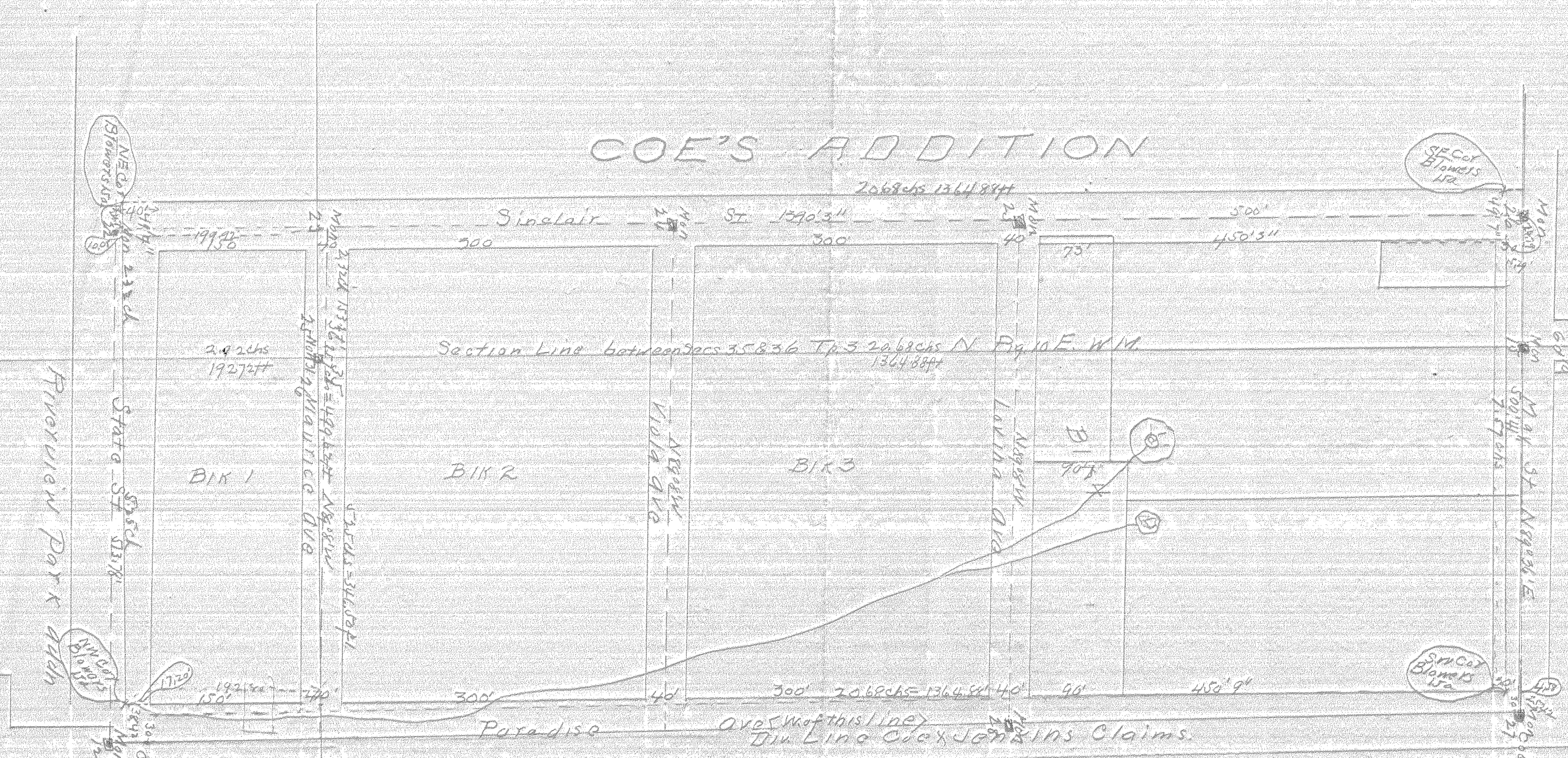


PLAT  
 SHOWING THE ESTABLISHMENT  
 OF MONUMENTS IN OR AROUND  
 BLOWERS' ADDN  
 TO HOOD RIVER WASCO CO OREGON

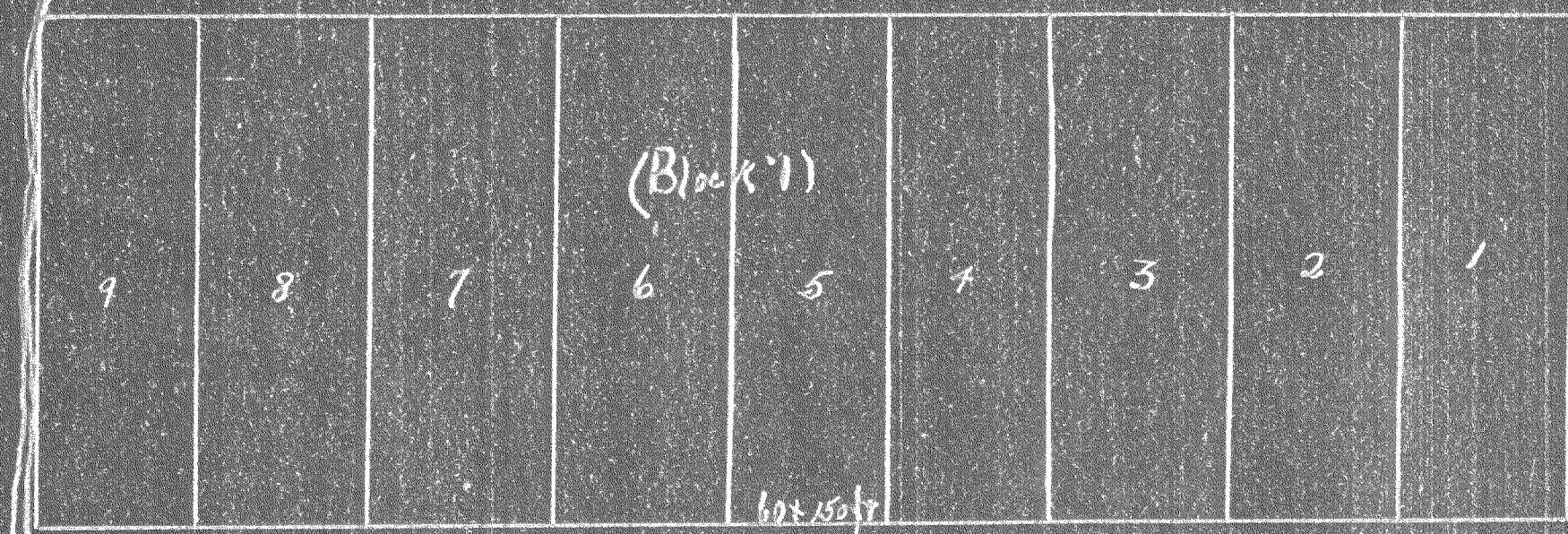


ADAM'S FIRST ADDITION

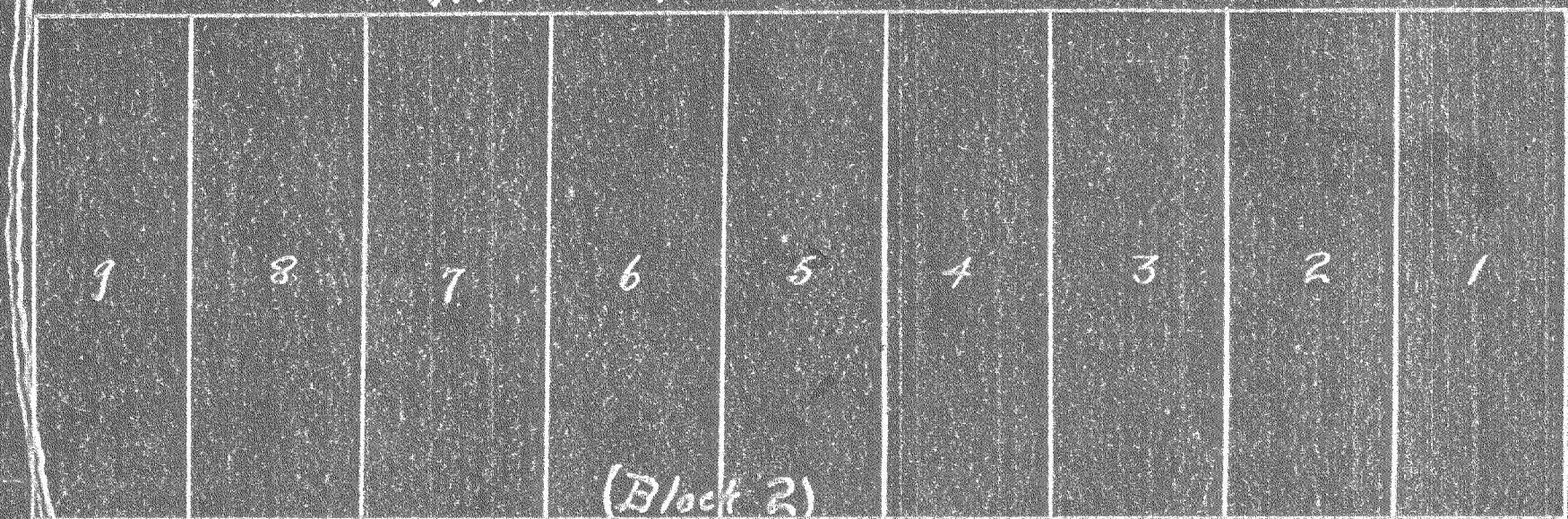
State of Oregon }  
 County of Wasco } I certify that I have established  
 city monuments for the City of Hood  
 River Wasco Co Oregon Numbers 22 to 31 inclusive  
 at the points indicated on the above plat after a  
 survey according to the annexed field notes  
 and that the courses & distances marked manual plat  
 and set out in said field notes are correct & nearly  
 correct  
 Witness my hand this 16 day of July 1902  
 John Palmer Threlkeldson, Sec. of the City



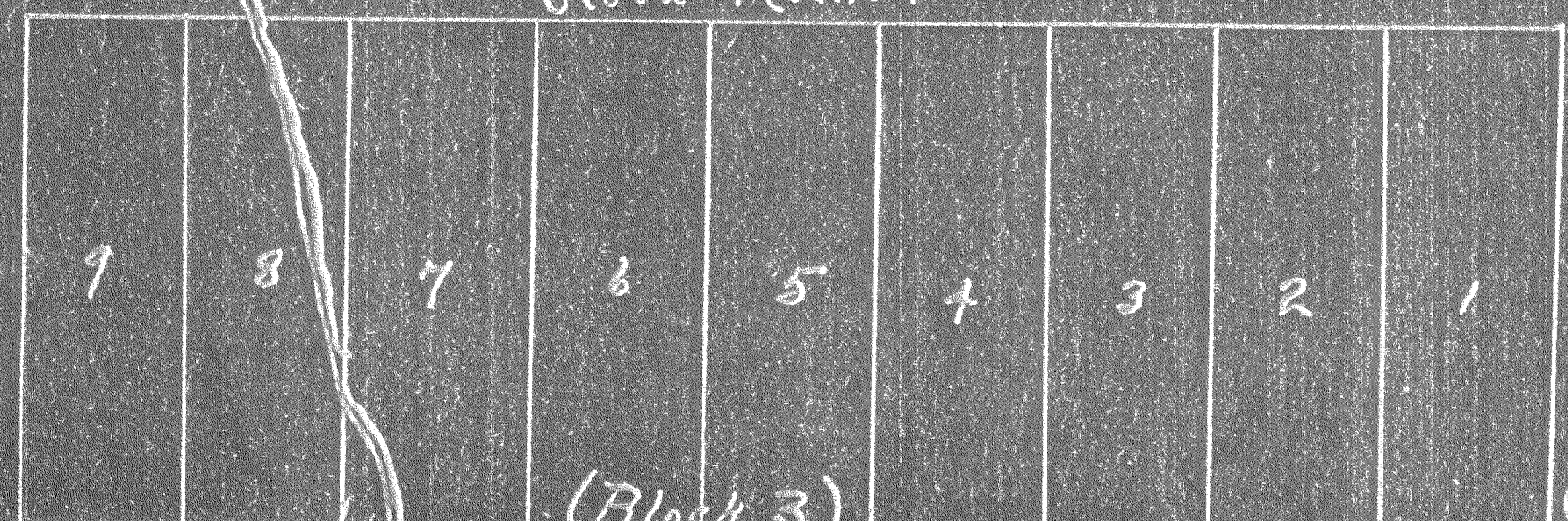
State Street



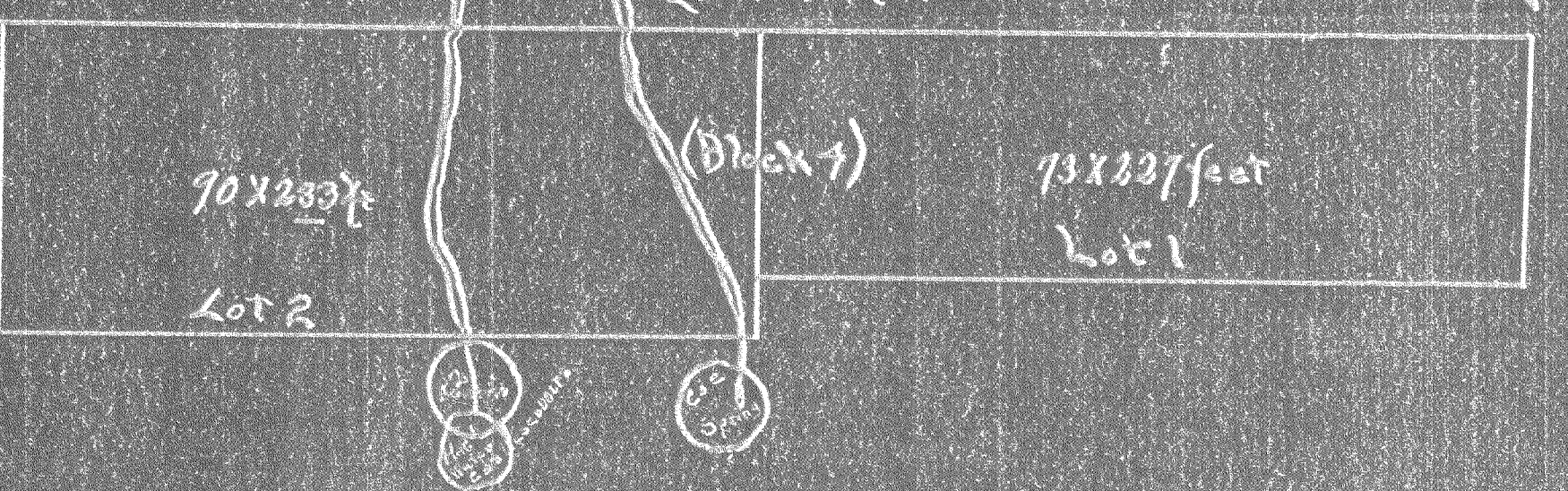
Maurice Avenue



Viola Avenue



Louise Avenue



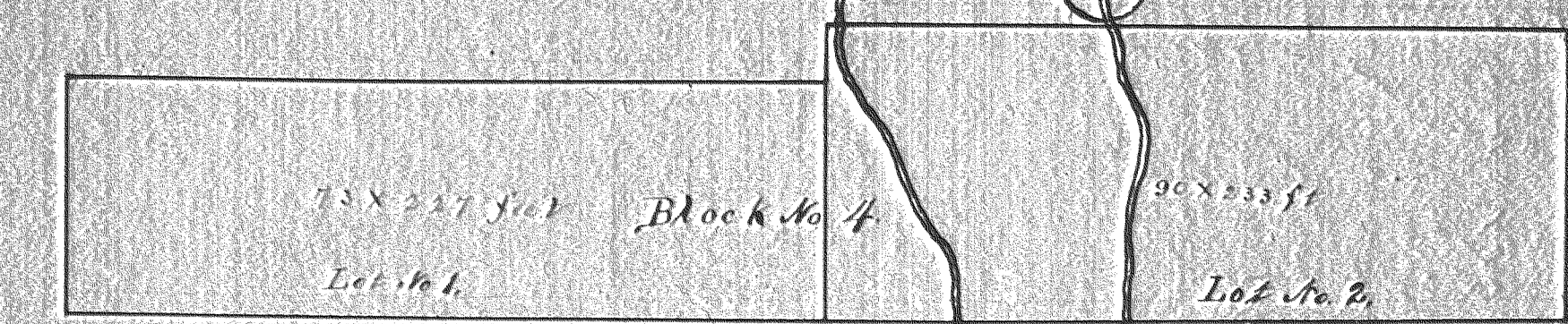
All streets 40 feet wide - Block 1,  
 Lots 1 to 9, 50 X 100 ft. - Block 2,  
 Lots 1 to 18, 30 X 150 ft. - Block 3,  
 Lots 1 to 18, 50 X 150 ft. - Block 4,  
 Lot 1, 71 X 221 ft.,  
 Lot 2, 93 X 221 ft.,  
 Description of Land in Plat.  
 The land is situated in sections No. 25, 26 Tp.  
 104 N., R. 13 E. T. 4 N. and forms a part of the  
 Section 25, 26, 27, and was deeded by W.  
 C. O'Connell and wife to A. S. Blowers, Aug. 27, 1894, for  
 Public Use, as follows:

I began the survey of this tract at a point  
 8.25 chains west and 2-47 chs. north of corner to  
 sections 25, 26, 27, & 28 Township & Range as above  
 and at this point (N.W. corner of tract) I set  
 1 block of iron pipe (1 1/2 inches) which I sub-  
 sequently set in the ground as a monument from which  
 I ran 125 inches in direction S. 10° 45' E. 240  
 chains distant.

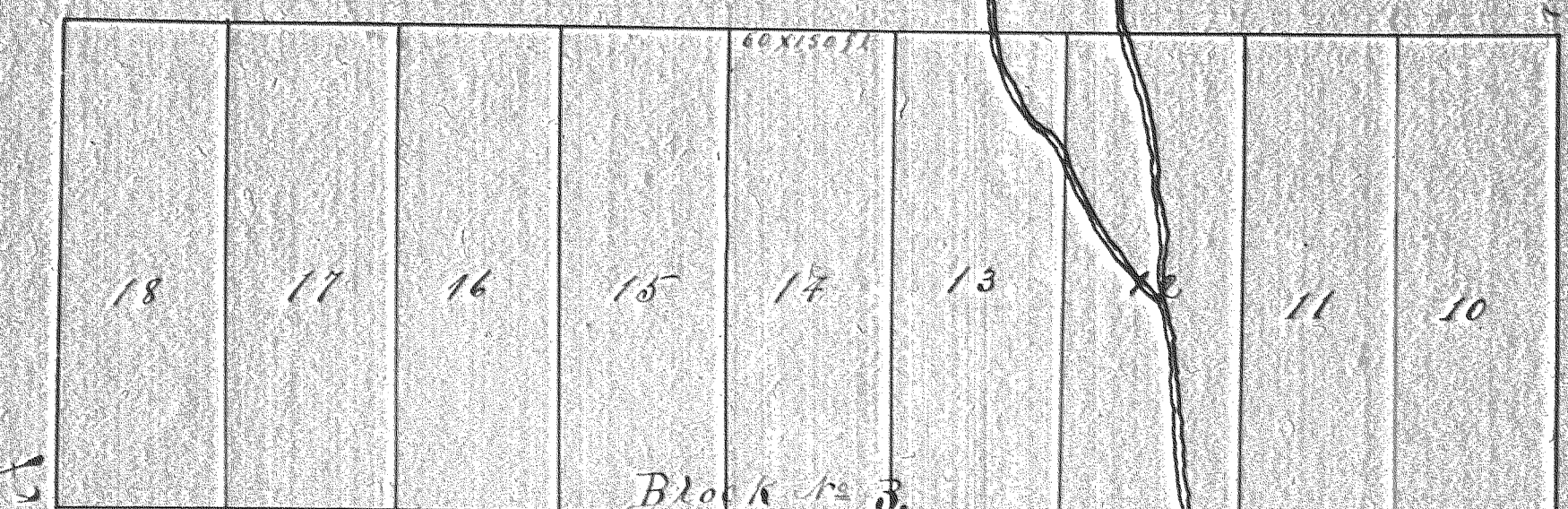
I certify that the above report and accompany-  
 ing plan are correct, and according to the survey  
 made by me.  
 O. J. Hayes,  
 Civil Engineer.  
 Hood River, April, 29<sup>th</sup>, 1899.

Filed for Record May 8th, 1899. A. S. Blowers Addition

Hood River



Louisa Avenue



Block No. 3

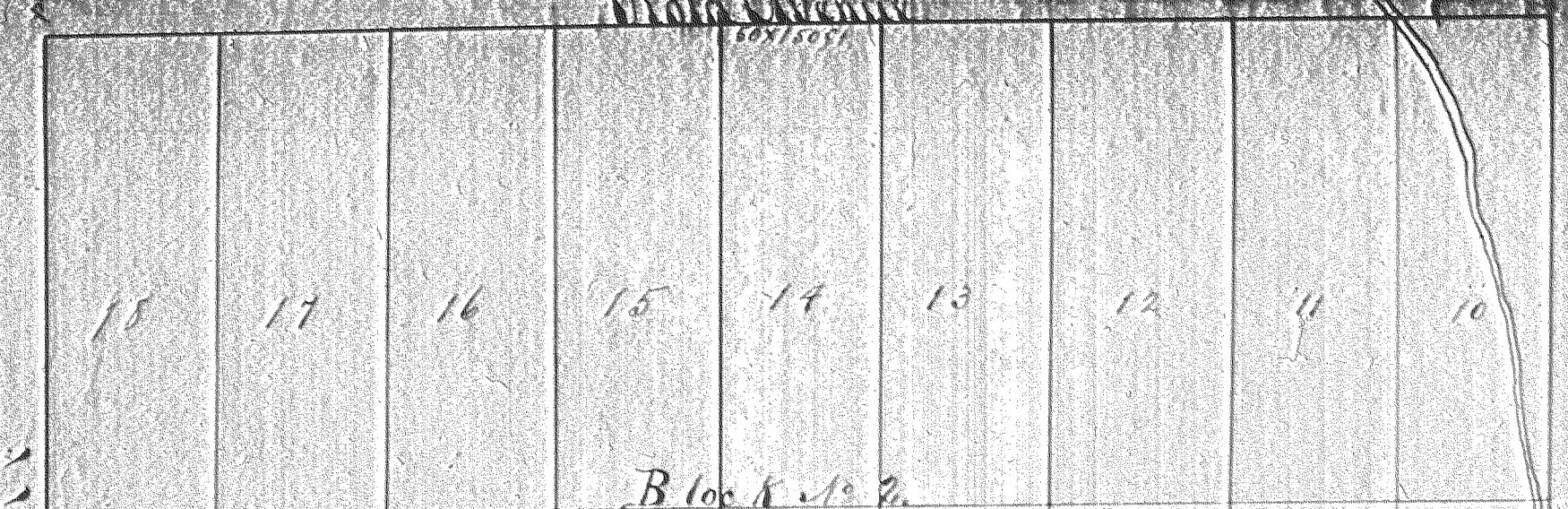


All streets 40 feet wide -  
 Block 1 -  
 Lots 1 to 9, 50 X 100 ft.  
 Block 2 -  
 Lots 1 to 18, 30 X 150 ft.  
 Block 3 -  
 Lots 1 to 18, 50 X 150 ft.  
 Block 4 -  
 Lot 1, 71 X 221 ft.,  
 Lot 2, 93 X 221 ft.  
 Description of Land in Plat.

The land is situated in sections  
 10, 11, 12, 13, 14, 15, 16, 17, 18, 19, 20, 21, 22, 23, 24, 25, 26, 27, 28, 29, 30, 31, 32, 33, 34, 35, 36, 37, 38, 39, 40, 41, 42, 43, 44, 45, 46, 47, 48, 49, 50, 51, 52, 53, 54, 55, 56, 57, 58, 59, 60, 61, 62, 63, 64, 65, 66, 67, 68, 69, 70, 71, 72, 73, 74, 75, 76, 77, 78, 79, 80, 81, 82, 83, 84, 85, 86, 87, 88, 89, 90, 91, 92, 93, 94, 95, 96, 97, 98, 99, 100, 101, 102, 103, 104, 105, 106, 107, 108, 109, 110, 111, 112, 113, 114, 115, 116, 117, 118, 119, 120, 121, 122, 123, 124, 125, 126, 127, 128, 129, 130, 131, 132, 133, 134, 135, 136, 137, 138, 139, 140, 141, 142, 143, 144, 145, 146, 147, 148, 149, 150, 151, 152, 153, 154, 155, 156, 157, 158, 159, 160, 161, 162, 163, 164, 165, 166, 167, 168, 169, 170, 171, 172, 173, 174, 175, 176, 177, 178, 179, 180, 181, 182, 183, 184, 185, 186, 187, 188, 189, 190, 191, 192, 193, 194, 195, 196, 197, 198, 199, 200, 201, 202, 203, 204, 205, 206, 207, 208, 209, 210, 211, 212, 213, 214, 215, 216, 217, 218, 219, 220, 221, 222, 223, 224, 225, 226, 227, 228, 229, 230, 231, 232, 233, 234, 235, 236, 237, 238, 239, 240, 241, 242, 243, 244, 245, 246, 247, 248, 249, 250, 251, 252, 253, 254, 255, 256, 257, 258, 259, 260, 261, 262, 263, 264, 265, 266, 267, 268, 269, 270, 271, 272, 273, 274, 275, 276, 277, 278, 279, 280, 281, 282, 283, 284, 285, 286, 287, 288, 289, 290, 291, 292, 293, 294, 295, 296, 297, 298, 299, 300, 301, 302, 303, 304, 305, 306, 307, 308, 309, 310, 311, 312, 313, 314, 315, 316, 317, 318, 319, 320, 321, 322, 323, 324, 325, 326, 327, 328, 329, 330, 331, 332, 333, 334, 335, 336, 337, 338, 339, 340, 341, 342, 343, 344, 345, 346, 347, 348, 349, 350, 351, 352, 353, 354, 355, 356, 357, 358, 359, 360, 361, 362, 363, 364, 365, 366, 367, 368, 369, 370, 371, 372, 373, 374, 375, 376, 377, 378, 379, 380, 381, 382, 383, 384, 385, 386, 387, 388, 389, 390, 391, 392, 393, 394, 395, 396, 397, 398, 399, 400, 401, 402, 403, 404, 405, 406, 407, 408, 409, 410, 411, 412, 413, 414, 415, 416, 417, 418, 419, 420, 421, 422, 423, 424, 425, 426, 427, 428, 429, 430, 431, 432, 433, 434, 435, 436, 437, 438, 439, 440, 441, 442, 443, 444, 445, 446, 447, 448, 449, 450, 451, 452, 453, 454, 455, 456, 457, 458, 459, 460, 461, 462, 463, 464, 465, 466, 467, 468, 469, 470, 471, 472, 473, 474, 475, 476, 477, 478, 479, 480, 481, 482, 483, 484, 485, 486, 487, 488, 489, 490, 491, 492, 493, 494, 495, 496, 497, 498, 499, 500, 501, 502, 503, 504, 505, 506, 507, 508, 509, 510, 511, 512, 513, 514, 515, 516, 517, 518, 519, 520, 521, 522, 523, 524, 525, 526, 527, 528, 529, 530, 531, 532, 533, 534, 535, 536, 537, 538, 539, 540, 541, 542, 543, 544, 545, 546, 547, 548, 549, 550, 551, 552, 553, 554, 555, 556, 557, 558, 559, 560, 561, 562, 563, 564, 565, 566, 567, 568, 569, 570, 571, 572, 573, 574, 575, 576, 577, 578, 579, 580, 581, 582, 583, 584, 585, 586, 587, 588, 589, 590, 591, 592, 593, 594, 595, 596, 597, 598, 599, 600, 601, 602, 603, 604, 605, 606, 607, 608, 609, 610, 611, 612, 613, 614, 615, 616, 617, 618, 619, 620, 621, 622, 623, 624, 625, 626, 627, 628, 629, 630, 631, 632, 633, 634, 635, 636, 637, 638, 639, 640, 641, 642, 643, 644, 645, 646, 647, 648, 649, 650, 651, 652, 653, 654, 655, 656, 657, 658, 659, 660, 661, 662, 663, 664, 665, 666, 667, 668, 669, 670, 671, 672, 673, 674, 675, 676, 677, 678, 679, 680, 681, 682, 683, 684, 685, 686, 687, 688, 689, 690, 691, 692, 693, 694, 695, 696, 697, 698, 699, 700, 701, 702, 703, 704, 705, 706, 707, 708, 709, 710, 711, 712, 713, 714, 715, 716, 717, 718, 719, 720, 721, 722, 723, 724, 725, 726, 727, 728, 729, 730, 731, 732, 733, 734, 735, 736, 737, 738, 739, 740, 741, 742, 743, 744, 745, 746, 747, 748, 749, 750, 751, 752, 753, 754, 755, 756, 757, 758, 759, 760, 761, 762, 763, 764, 765, 766, 767, 768, 769, 770, 771, 772, 773, 774, 775, 776, 777, 778, 779, 780, 781, 782, 783, 784, 785, 786, 787, 788, 789, 790, 791, 792, 793, 794, 795, 796, 797, 798, 799, 800, 801, 802, 803, 804, 805, 806, 807, 808, 809, 810, 811, 812, 813, 814, 815, 816, 817, 818, 819, 820, 821, 822, 823, 824, 825, 826, 827, 828, 829, 830, 831, 832, 833, 834, 835, 836, 837, 838, 839, 840, 841, 842, 843, 844, 845, 846, 847, 848, 849, 850, 851, 852, 853, 854, 855, 856, 857, 858, 859, 860, 861, 862, 863, 864, 865, 866, 867, 868, 869, 870, 871, 872, 873, 874, 875, 876, 877, 878, 879, 880, 881, 882, 883, 884, 885, 886, 887, 888, 889, 890, 891, 892, 893, 894, 895, 896, 897, 898, 899, 900, 901, 902, 903, 904, 905, 906, 907, 908, 909, 910, 911, 912, 913, 914, 915, 916, 917, 918, 919, 920, 921, 922, 923, 924, 925, 926, 927, 928, 929, 930, 931, 932, 933, 934, 935, 936, 937, 938, 939, 940, 941, 942, 943, 944, 945, 946, 947, 948, 949, 950, 951, 952, 953, 954, 955, 956, 957, 958, 959, 960, 961, 962, 963, 964, 965, 966, 967, 968, 969, 970, 971, 972, 973, 974, 975, 976, 977, 978, 979, 980, 981, 982, 983, 984, 985, 986, 987, 988, 989, 990, 991, 992, 993, 994, 995, 996, 997, 998, 999, 1000.

I began the survey of this  
 tract at a point 5-25 chains west  
 and 9-17 chs. north of corner to  
 sections 25, 26, 27, 28 Township &  
 Range as above and at the point C  
 (N.W. corner of tract) I set  
 1 block of iron pipe (1 1/2 inches)  
 which I have firmly in the ground  
 as a monument from which I  
 ran 110 inches in direction S. 10° 45'  
 E. 240 chains distant.  
 I certify that the above report  
 and accompanying plan are correct  
 and according to the survey made  
 by me.  
 O. J. Hayes,  
 Civil Engineer.  
 Hood River, April 29<sup>th</sup>, 1899.

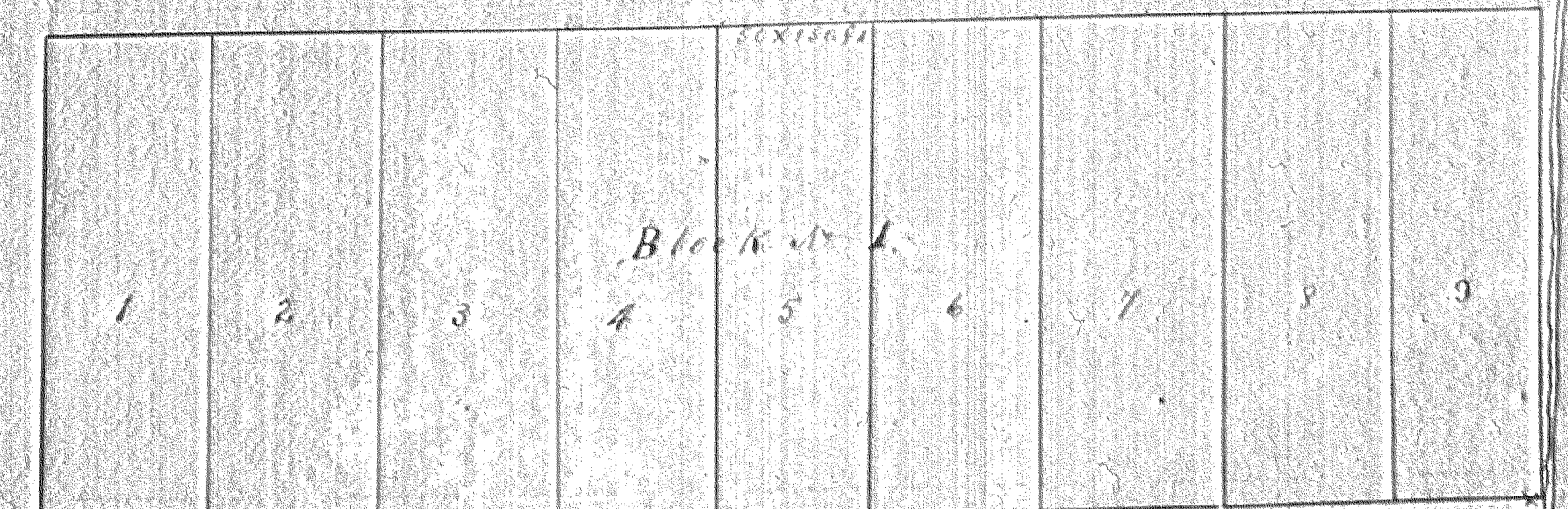
Block No. 2



Block No. 2



Maurice Avenue



State Street



County

Road

Avenue

Sinclair

Street

Road

County

Vol. 27 of Records