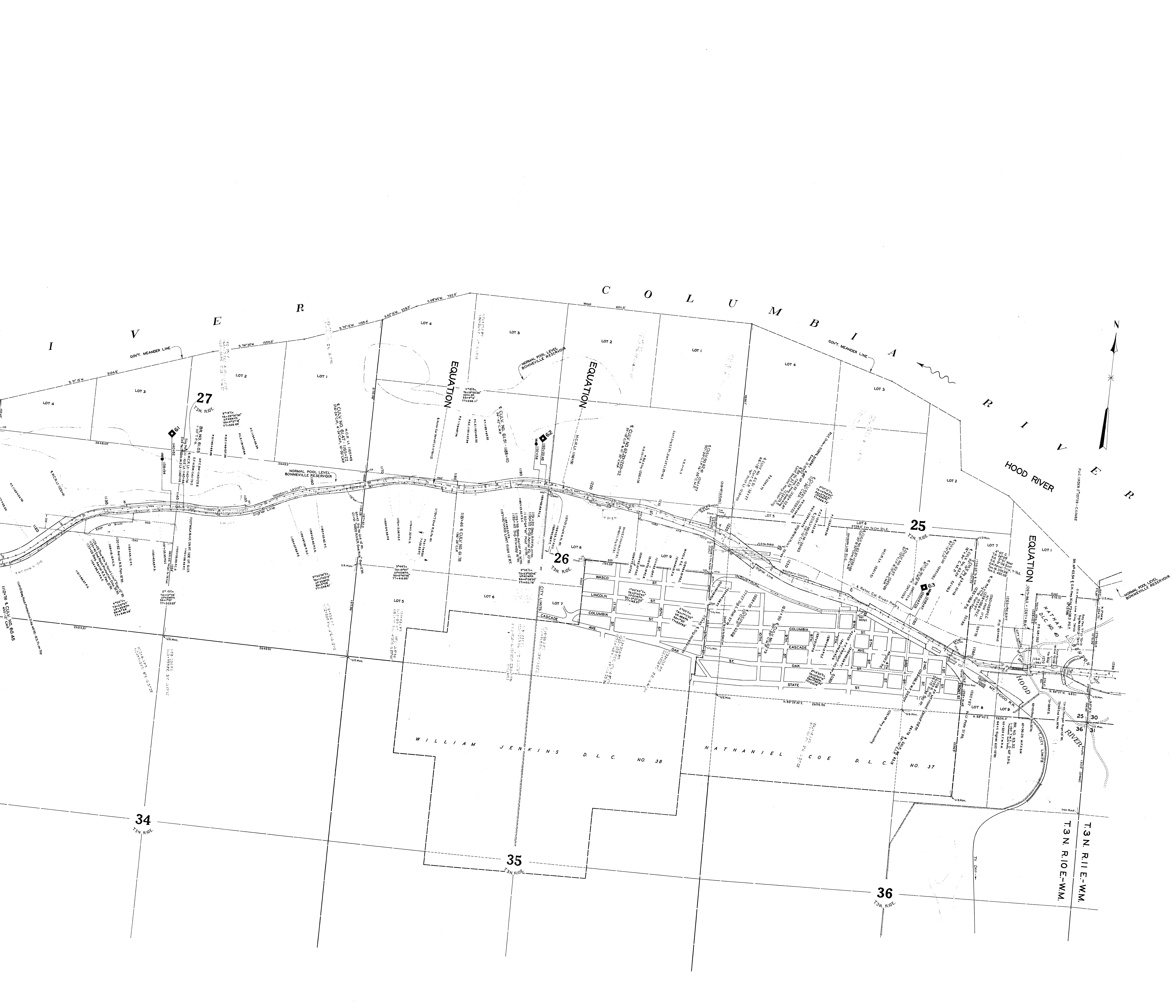


**OREGON-WASHINGTON RAILROAD & NAVIGATION CO.**  
 OREGON DIVISION—MAIN LINE  
**MENO TO THE DALLES**  
 HOOD RIVER AND WASCO COUNTIES, OREGON  
 MP 58.4 to MP 84.2  
 Station 1001 to Station 2367 08  
 Sec. 31, T. 3 N., R. 10 E., to Sec. 3, T. 1 N., R. 13 E., W.M.  
 Office of Chief Engineer, U.P.R.R. Co., Omaha, Nebr., July 15, 1947  
 Scale, 1" = 400'

Original alignment platted from location "Book Profile," old 200' scale  
 alignment maps and Oregon Div. Notebooks No. 309, 311, 372 and  
 778. Present curves, land from topography, etc., platted from "Valley  
 maps," U.S. Engineers maps, C.E. Draw. No. 54480; "As Con-  
 structed" work order plans on data, principally W.O.'s 1966-1967, Ore-  
 gon Div. Notebooks No. A-22, 25, 29, 29½, 32, 36, 37, 38, 67, 68 and 73,  
 also No. 430, 431 and 1945 remaining Notebook F-1. See File O.W.  
 11-12 "General" Dec. 18, 1943 to July 15, 1947.

PLATTED BY J.E.V. - S.F.H.	TRACED BY G.F.H.	CHECKED BY B.F.B.
CHECKED BY RIGHT OF WAY 15		
C.E. DRAWING NO. 54811		
SEL. C.E. PROFILE NO. 517		



I  
V  
E  
R  
  
C  
O  
L  
U  
M  
B  
I  
A  
  
R  
I  
V  
E  
R

27

26

25

WILLIAM JENKINS D.L.C. NO. 38

NATHANIEL COE D.L.C. NO. 37

34

35

36

T3N R1E-WM  
T3N R1E-WM

EQUATION

EQUATION

EQUATION

NORMAL POOL LEVEL  
BONNEVILLE RESERVOIR

NORMAL POOL LEVEL  
BONNEVILLE RESERVOIR

HOOD RIVER

LOT 4

LOT 3

LOT 2

LOT 1

LOT 4

LOT 3

LOT 2

LOT 1

LOT 4

LOT 3

LOT 2

LOT 1

LOT 8

LOT 9

LOT 6

LOT 7

LOT 5

LOT 6

LOT 7

LOT 8

LOT 9

LOT 10

LOT 11

LOT 12

LOT 13

LOT 14

LOT 15

LOT 16

LOT 17

LOT 18

LOT 19

LOT 20

LOT 21

LOT 22

LOT 23

LOT 24

LOT 25

LOT 26

LOT 27

LOT 28

LOT 29

LOT 30

WASCO

LINCOLN

COLUMBIA

CASCADE

OAK

STATE

INDUSTRIAL

COLUMBIA

CASCADE

OAK

STATE

INDUSTRIAL

T3N R1E

T3N R1E

T3N R1E

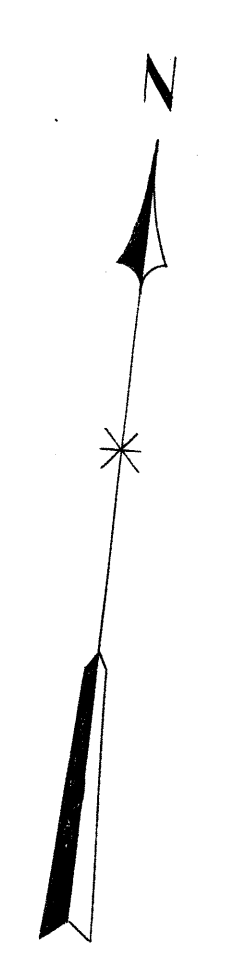
T3N R1E

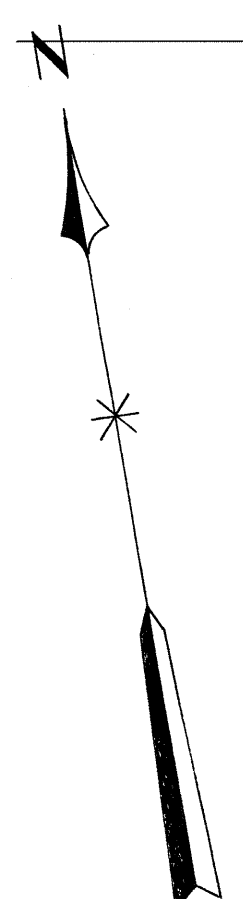
T3N R1E

T3N R1E

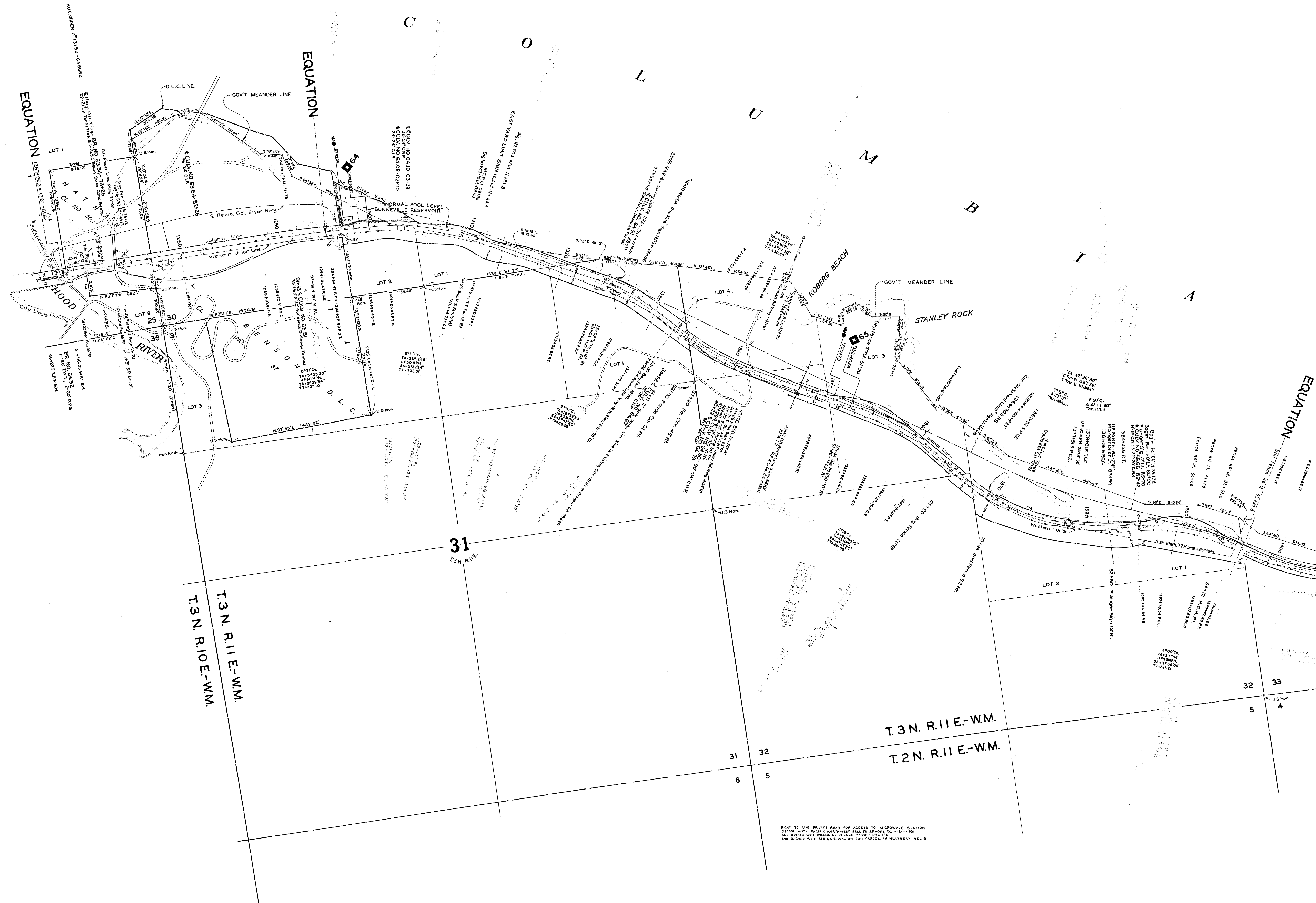
GOVT. MEANDER LINE

GOVT. MEANDER LINE

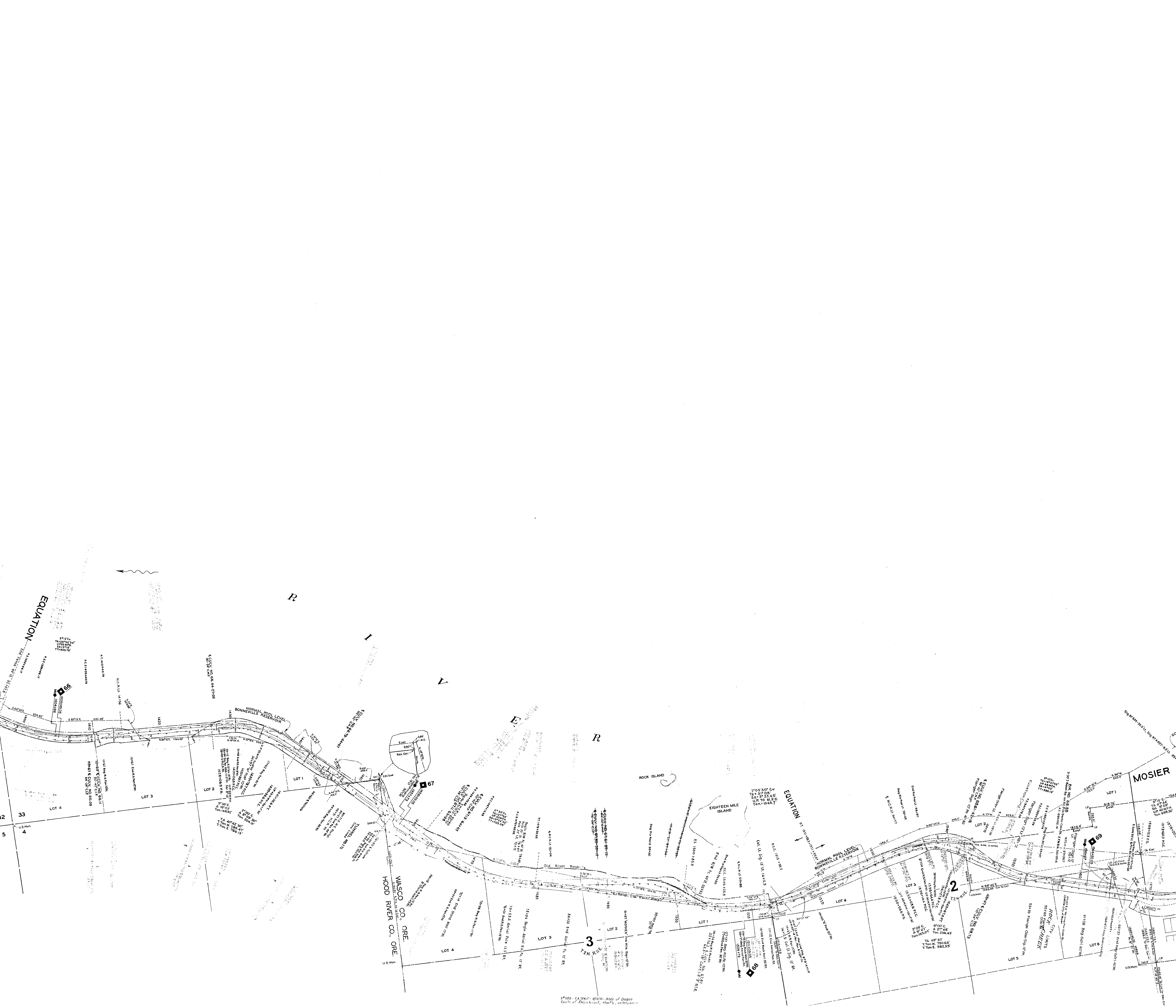




HOOD RIVER  
BONNEVILLE RESERVOIR



RIGHT TO USE PRIVATE ROAD FOR ACCESS TO MADRONVILLE STATION  
GRANTED BY PACIFIC ASTOR-WEST BELL TELEPHONE CO. - 12-4-1964  
AND 015000 WITH M.S.E.V. WALKER FOR PARCEL IN NE1/4 SEC. 6



R

I

V

R

MOSIER



EQUATION

MOSIER

CHATFIELD

T.2N. R.12E-W.M.  
T.2N. R.11E-W.M.

T.3N. R.12E-W.M.  
T.2N. R.12E-W.M.

J. A. MOSIER  
D. L. C. NO. 37

J. A. MOSIER  
D. L. C. NO. 37

MOSIER CREEK

5  
T.2N. R.12E

6  
T.2N. R.12E

M

I A

B

C

L

32 33

5 4

6 5

31 32

6 5

31 32

6 5

31 32

6 5

31 32

6 5

31 32

6 5

31 32

6 5

31 32

6 5

31 32

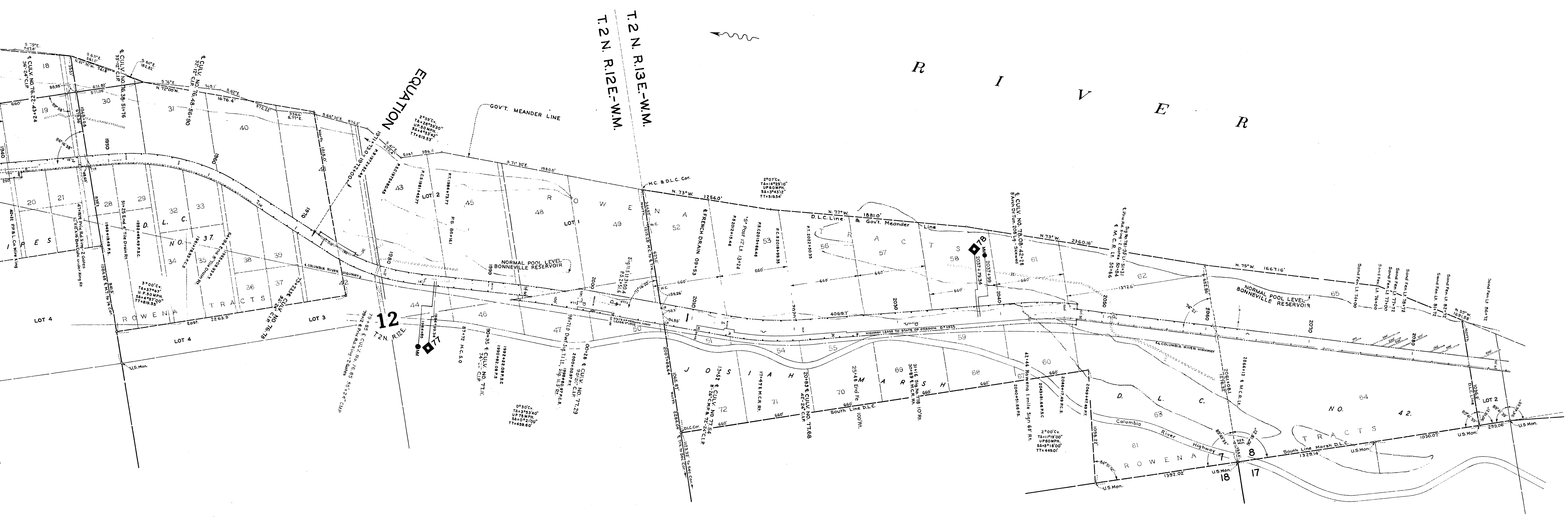
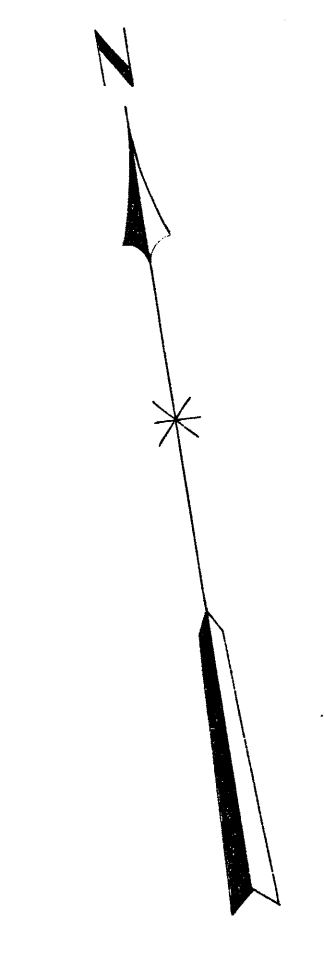
6 5

R I V E R



O  
L  
U  
M  
B  
I  
A

R  
I  
V  
E  
R



C O L U

EQUATION



EQUATION

JUSTIN CHENOWITH

JUSTIN CHENOWITH  
D.L.C. NO. 37

D.L.C. NO. 37

20

17

11

42

79

92

20

20

20

20

20

20

20

20

20

20

20

20

20

20

20

20

20

20

20

20

20

20

20

20

20

20

20

20

20

20

20

20

20

20

20

20

20

20

20

20

20

20

20

20

20

20

20

20

20

20

20

20

20

20

20

20

20

20

20

20

20

20

20

20

20

20

20

20

20

20

20

20

20

20

20

20

20

20

20

20

20

20

20

20

20

20

20

20

20

20

20

20

20

20

20

20

20

20

20

20

20

20

20

20

20

20

20

20

20

20

20

20

20

20

20

20

20

20

20

20

20

20

20

20

20

20

20

20

20

20

20

20

20

20

20

20

20

20

20

20

20

20

20

20

20

20

20

20

20

20

20

20

20

20

20

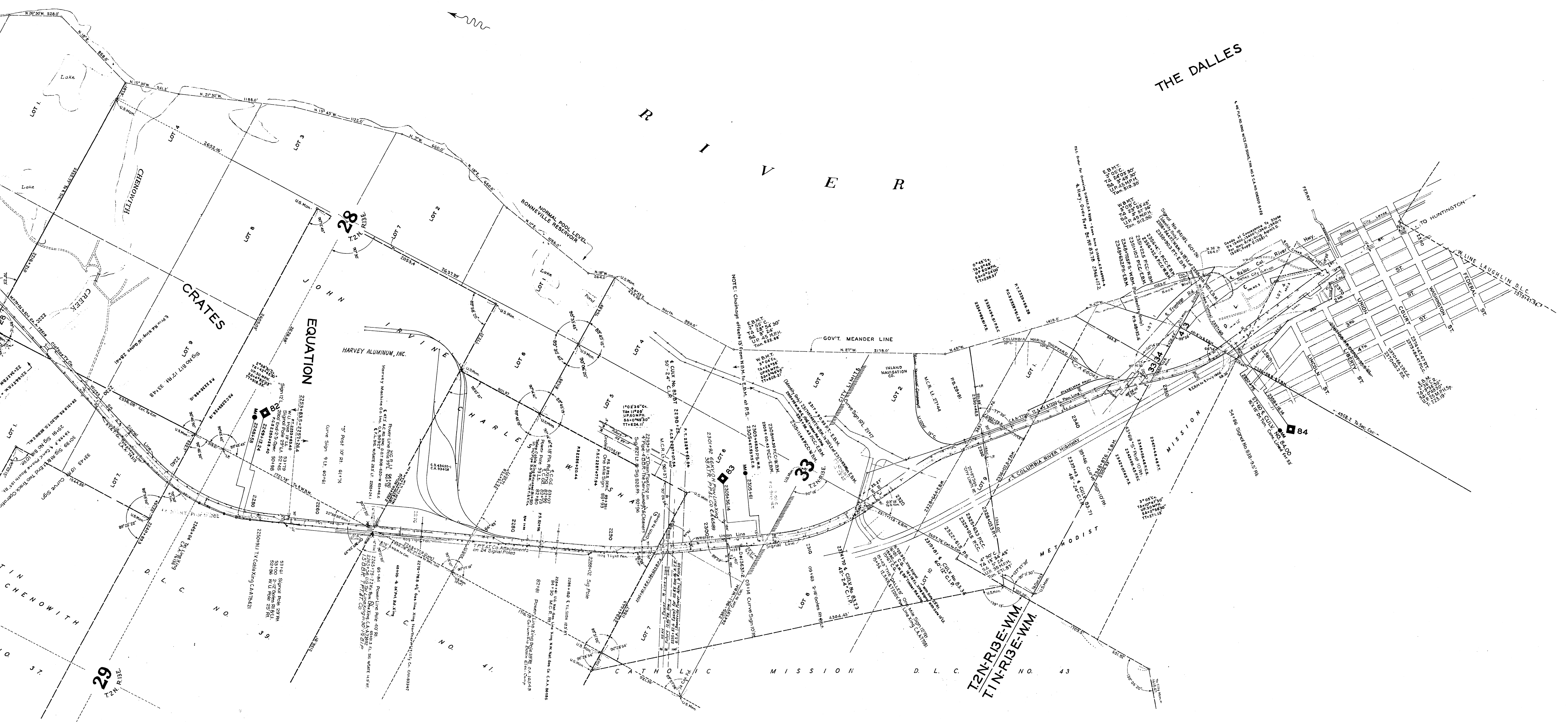
20



U  
M  
B  
I  
A

R  
I  
V  
E  
R

THE DALLES



T2N-R3E-WM  
T1N-R3E-WM

29

28

33

34

84

83

T  
C  
H  
E  
N  
O  
W  
I  
T  
H

CRATES

EQUATION

HARVEY ALUMINUM, INC.

CATHOLIC

MISSION

METHODIST

MISSION

W LINE LAUGH LIN D.L.C. RESTRICTION

TO HUNTINGTON

ST

ST

ST

ST

ST

ST

ST

ST

ST

ST

ST

ST

ST

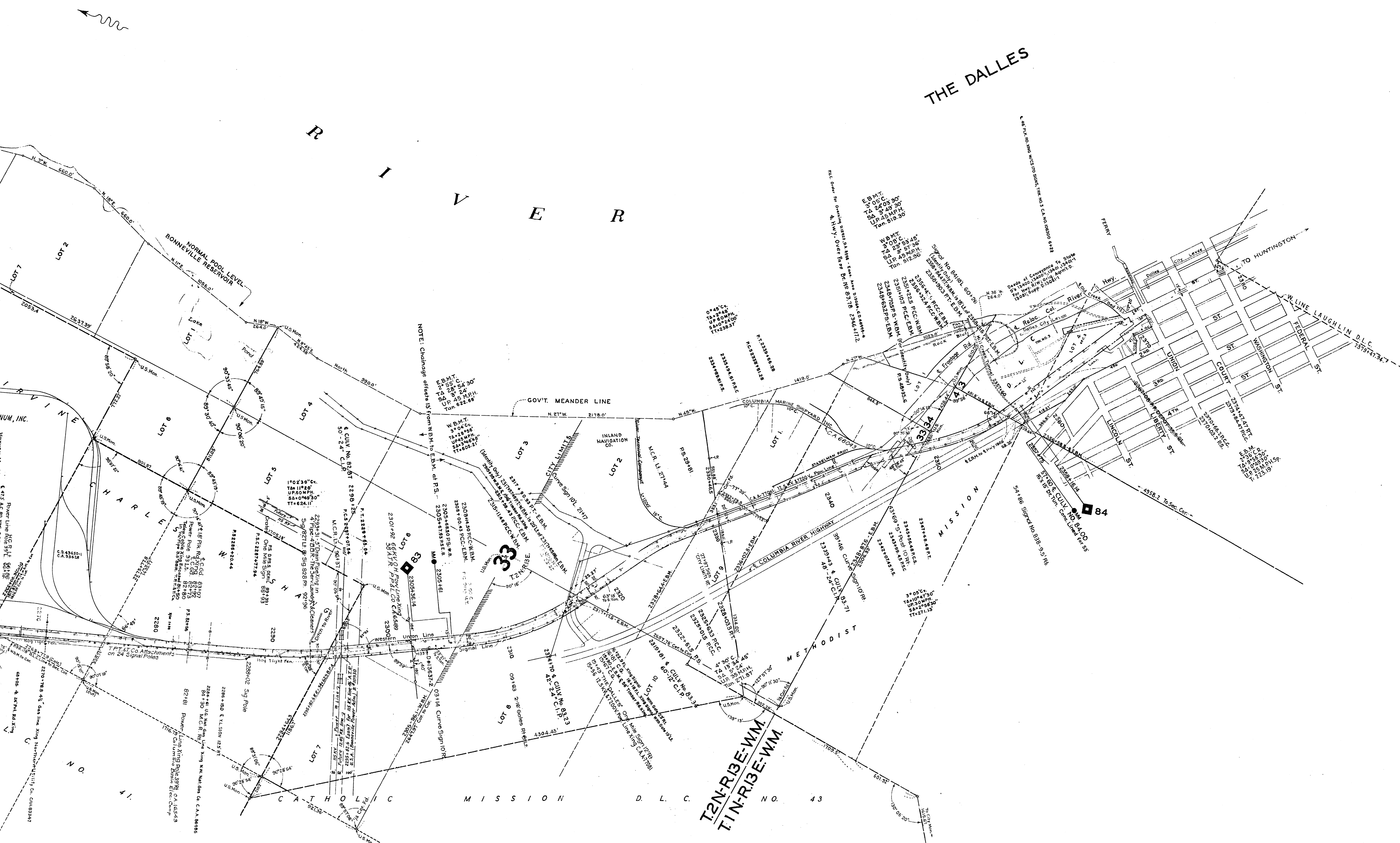
ST

ST

ST

ST

ST



**OREGON-WASHINGTON RAILROAD & NAVIGATION CO.**  
 OREGON DIVISION—MAIN LINE  
**MENO TO THE DALLES**  
 HOOD RIVER AND WASCO COUNTIES, OREGON  
 MP 58.4 to MP 84.2  
 Station 1901 to Station 2367.06  
 Sec. 31, T. 3 N., R. 10 E., to Sec. 3, T. 1 N., R. 13 E., W.M.  
 Office of Chief Engineer, U.P.R.R. Co., Omaha, Nebr., July 15, 1947  
 Scale: 1" = 400'

Original alignment plotted from location "Book Profile," old 200' scale alignment maps and Oregon D.W. Notebooks No. 309, 331, 372 and 2078. Present curves, land to topography, etc., plotted from "Valuation" maps, U.S. Engineers maps, C.E. Dwyer, No. 5448; "As Constructed" work order prints to date, principally W.O.'s 1368-1957, Oregon Div. Notebooks No. A-22, 25, 23, 291, 32, 36, 37, 38, 87, 68 and 73, also No. 430, 431 and 1945 recharging Notebook F-1. See File O.W. 11-12 "General" Dec. 18, 1943 to July 15, 1947.

PLATTED BY J.E.V. - G.F.H.	TRACED BY G.F.H.	CHECKED BY B.F.B.	
CHECKED AS TO RIGHT OF WAY BY		DATE	

C.E. DRAWING NO. 54811.  
 SEE C.E. PROFILE NO. 5425