

SW1/4 SEC. 31 T.3N. R.IE. W.M.
HOOD RIVER COUNTY

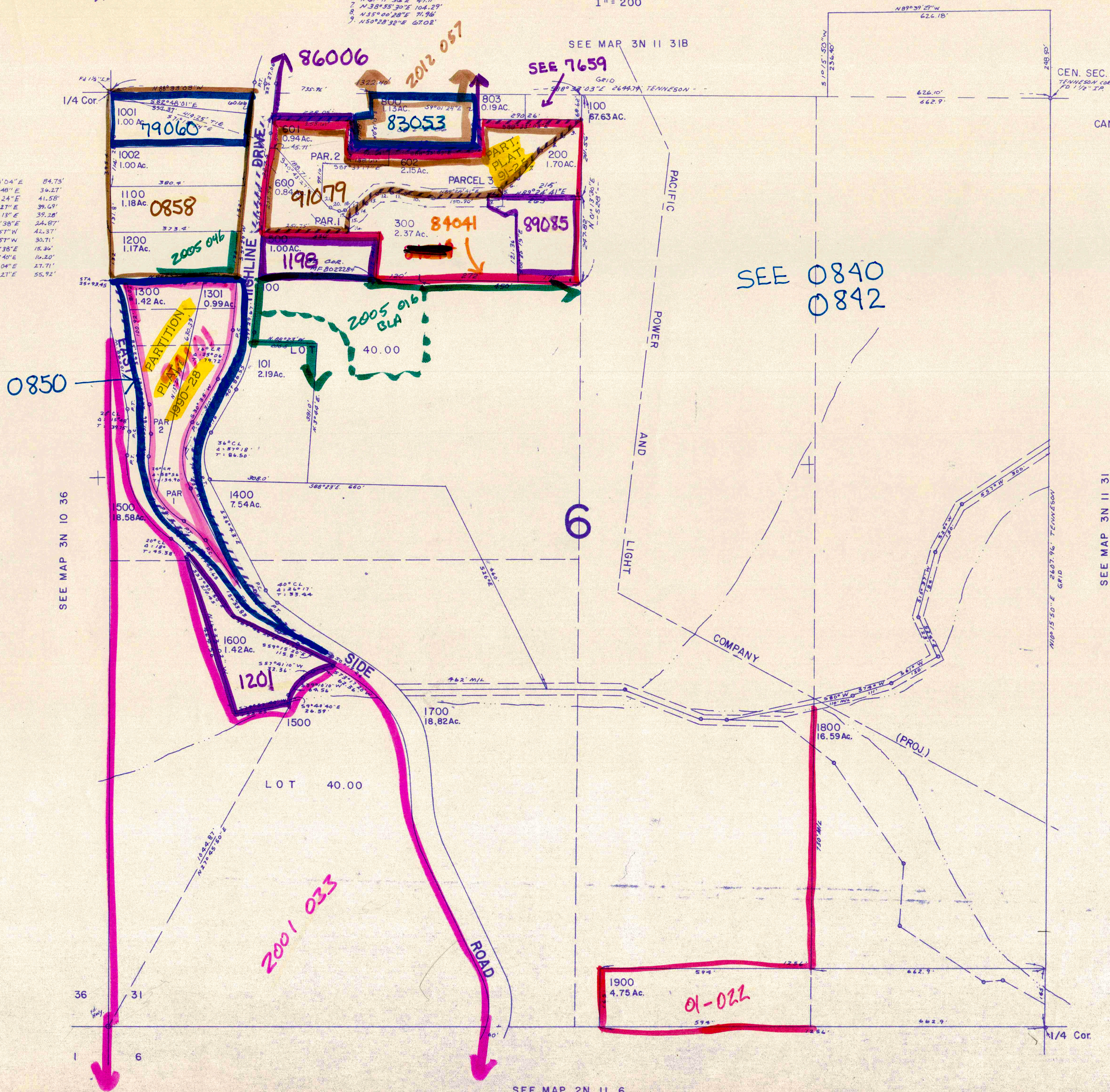
3N 11 31C

1" = 200'

PARCEL 200:
1. S 89° 24' 41" W 28.71'
2. N 64° 1' 24" W 55.90'
3. N 0° 35' 13" W 25'
4. N 89° 24' 41" E 50'
5. N 0° 35' 19" W 25'
6. N 61° 11' 36" E 49.11'
7. N 38° 53' 30" E 104.29'
8. N 35° 00' 28" E 71.96'
9. N 50° 28' 32" E 67.02'

PARCEL 603

- 10. S 80° 48' 04" E 84.73'
- 11. S 80° 29' 46" E 36.27'
- 12. N 84° 23' 24" E 41.58'
- 13. N 50° 16' 27" E 39.69'
- 14. N 42° 34' 13" E 39.28'
- 15. N 53° 56' 38" E 24.87'
- 16. S 01° 24' 57" W 42.37'
- 17. S 01° 24' 57" W 30.71'
- 18. N 55° 56' 38" E 15.36'
- 19. N 86° 57' 40" E 16.20'
- 20. S 71° 10' 04" E 27.71'
- 21. S 40° 43' 27" E 55.92'



CANCELLED NO.

- 700
- 900
- 1000
- 804
- 400
- 301
- 805

SEE 0840
0842

6

SEE MAP 3N 11 31

SEE MAP 3N 10 36

SEE MAP 2N 11 6

3N 11 31C

5/94